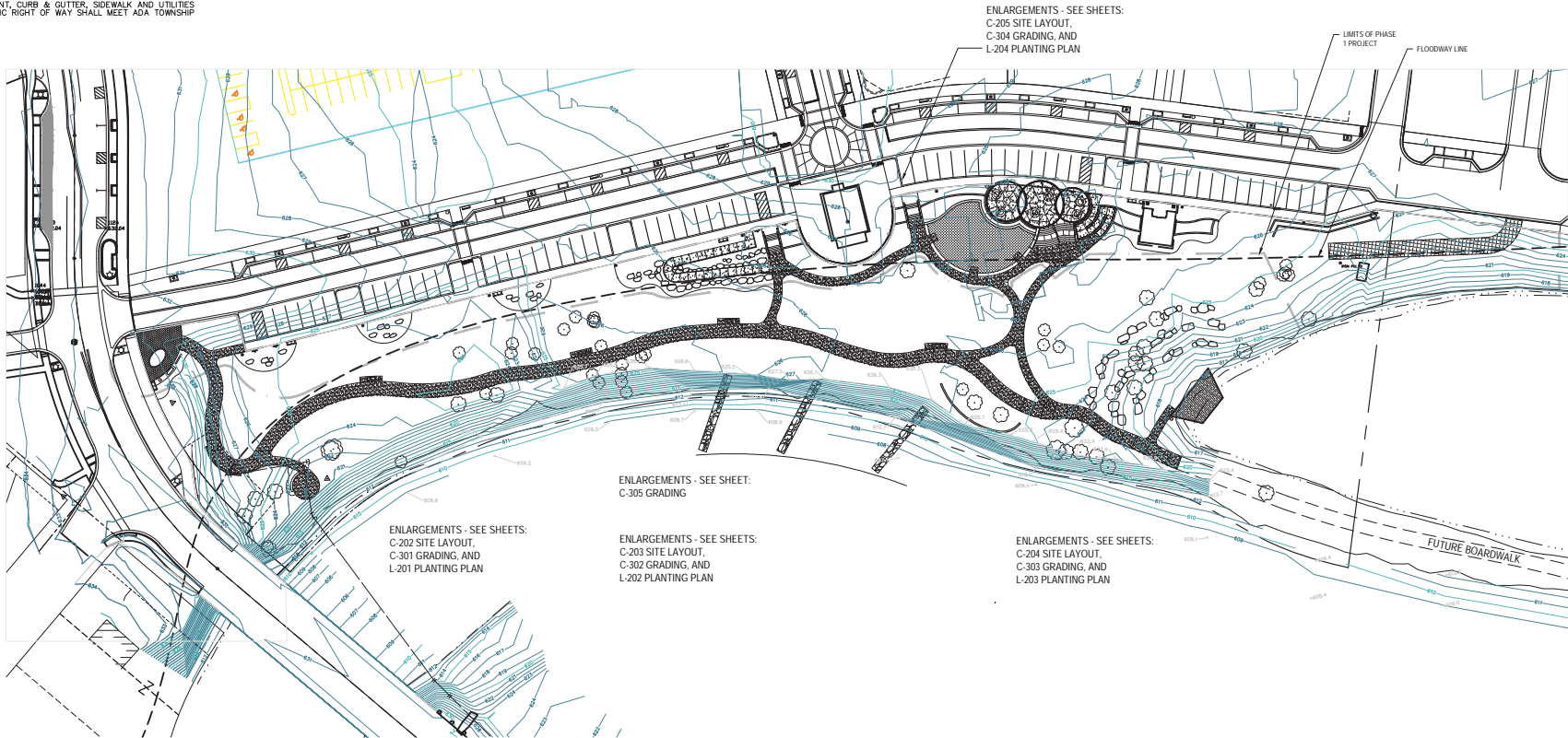


GENERAL SITE LAYOUT NOTES

1. COORDINATE WORK WITH CONTRACTOR BUILDING RIVER STREET.
2. Contact "MISS DIG" toll free at 1-800-482-7171 three (3) days prior to the start of construction, excluding Saturdays, Sundays, and Holidays.
3. NO DIMENSION MAY BE SCALED. REFER UNCLEAR ITEMS TO THE ENGINEER FOR INTERPRETATION.
4. DIMENSIONS SHOWN ARE TO FACE OF CURB UNLESS OTHERWISE NOTED AS B-B (BACK TO BACK) OR E-E (EDGE OF METAL TO EDGE OF METAL).
5. UPON REQUEST, ELECTRONIC INFORMATION WILL BE PROVIDED FOR SITE LAYOUT PURPOSES. CONTRACTOR SHALL REQUEST ALL INFORMATION IN WRITING THROUGH PROGRESSIVE AE. LAYOUT OF ALL NEW CONSTRUCTION SHALL BE DONE BY A LICENSED SURVEYOR.
6. ALL CONCRETE JOINTS SHALL BE SAW-CUT PER SPECIFICATIONS.
7. CONTRACTOR MUST RESTORE AND REPAIR ANY EXISTING CONDITIONS DISTURBED BY CONSTRUCTION. THIS IS TO INCLUDE BURIED UTILITIES, LIGHTING, LANDSCAPING, SPRINKLING, ETC.
8. ANY AREA DISTURBED BY CONSTRUCTION TO BE RESTORED TO CONDITION EQUAL TO OR BETTER THAN BEFORE CONSTRUCTION BEGAN.
9. ALL PAVEMENT, CURB & GUTTER, SIDEWALK AND UTILITIES WITHIN PUBLIC RIGHT OF WAY SHALL MEET ADA TOWNSHIP STANDARDS.



SITE OVERALL KEY PLAN

PROJECT: C201 - ADA TOWNSHIP, MI  
DATE: 07/26/2017  
DRAWN BY: JC/ENG BY: PAL  
CHECKED BY: PAL  
PROJECT MGR: PAL  
PROGRESSIVE AE ENGINEERING AND ARCHITECTURE, PLLC  
18114 AVE P.N.E., GRAND RAPIDS, MI 49525  
616.201.1651 FAX  
WWW.PROGRESSIVEAE.COM