



TOWNSHIP

RECREATION FACILITIES AND PROGRAMS NEEDS ASSESSMENT

NOVEMBER 2018



RJM DESIGN

Land Planning • Landscape Architecture

Prepared By:

RJM Design, Inc.
1971 East Beltline NE, Suite 217
Grand Rapids, MI 49525
<http://www.rjm-design.com/>



MainStreet Planning Company
1600 East Beltline Suite 212
Grand Rapids, MI 49525
<https://www.mainstreetplanningco.com/>



TOWNSHIP

Prepared For:

Ada Township
Ada Township Hall
P.O. Box 370, 7330 Thornapple Rive Dr., Ada, MI 49301
<http://adamichigan.org/township/departments/parks-recreation>

ACKNOWLEDGMENTS

TOWNSHIP PARKS, RECREATION AND LAND PRESERVATION ADVISORY BOARD

Township Board Members

George Haga, Township Supervisor

Catherine Jacobs, Township Trustee

Paul LeBlanc, Township Trustee

Township Staff

James Ferro, Township Planning Director

Mark Fitzpatrick, Township Parks & Recreation Director

Rob McCormick, Recreation Director

Citizen Members

Betty Jo Crosby

Randy Damstra

Wayne Nowak

Elise Roe

Kraig Schmottlach

Rick Steketee

Mike Terwilliger

Jeff VandenBerge





TABLE OF CONTENTS

ACKNOWLEDGMENTS

- 01 INTRODUCTION
- 02 REVIEW OF EXISTING MATERIALS
- 03 REVIEW OF NATIONAL METRICS
- 04 REVIEW OF NEIGHBORING COMMUNITIES
- 05 STAKEHOLDER ENGAGEMENT
- 06 RECOMMENDATIONS
- 07 SUMMARY OF KEY FINDINGS

APPENDICES

- A FACILITIES DISTRIBUTION MAP
- B ADA TOWNSHIP RECREATION FACILITIES INVENTORY
- C RECREATION FACILITIES MATRIX
- D NEIGHBORING COMMUNITIES INVENTORY
- E COMMUNITY REMARKS© RESULTS
- F LEADERSHIP WORKSHOP CAFE RESULTS
- G WORKSHOP IN A BOX RESULTS

01 INTRODUCTION

PURPOSE OF THE RECREATION NEEDS ASSESSMENT

The Ada Township Recreation Needs Assessment incorporates an analysis of Township-owned and regional recreation facilities and recreation/education programs. The goal of the Assessment is to provide Ada Township with recommendations for the development of new parks, the addition of recreation amenities in existing Township parks, and a guide for planning future recreation programs and support services.

ADA TOWNSHIP PARKS & RECREATION DEPARTMENT MISSION

The mission of the Ada Township Parks & Recreation Department is to provide all community members with diverse recreational opportunities including access to premier natural, historical and cultural areas that enhance their quality of life and inspire the preservation of nature.

ADA TOWNSHIP PARKS & RECREATION DEPARTMENT OVERVIEW

The Parks & Recreation Department is responsible for managing operations of the Township's parks, preserves, trails, and recreation programs. This includes four community parks and eight preserves that comprise 500 acres of recreation opportunities. The location of these recreation facilities is shown in the **APPENDIX A: FACILITIES DISTRIBUTION MAP**.

RECREATION NEEDS ASSESSMENT APPROACH

The Assessment was guided by the RJM Design and MainStreet Planning Co consultant team in collaboration with the Township Parks, Recreation and Land Preservation Advisory Board and community input. The Assessment included the following tasks:

Review of Existing Plans, Studies, and Surveys

A review of existing plans, studies, and surveys relevant to the assessment including: Ada Township 2017 Parks, Recreation and Land Preservation Community Recreation Plan; 2013 Envision Ada plans; recent community surveys, park master plans, and accessibility review; listings of current recreation programs and facilities; and Kent County Park, Trails and Natural Areas Master Plan 2019-2023 Draft. The above materials were reviewed to establish a baseline of current conditions and planning in place in Ada Township.

Review of National Metrics, Standards, and Trends

A review of national recreation metrics and standards to develop a summary of case studies and best practices for recreation facilities, amenities, programs, and services.

Review of Neighboring Communities

The Assessment includes a review of recreation facilities, amenities, programs, and services available in neighboring communities to establish a benchmark of regional standards and regional recreation offerings available to Ada residents.

Stakeholder Engagement

The Assessment employed the following three forms of stakeholder engagement:

- Community Remarks®, a map-based public engagement portal that allows interested persons to submit comments related to specific sites or geographic areas, and to view and vote on other user-submitted comments.
- Leadership Workshop Café, an invitation-only event where community leaders were asked to provide comments on eight topics relating to parks and recreation programs and amenities in Ada Township; recreational facilities used outside the Township; and on roadblocks or problems in providing recreation or access to recreation in Ada Township.
- Workshop-in-a-Box, a self-guided input method completed by three civic groups representing a cross-section of the population of Ada Township.

02 REVIEW OF EXISTING MATERIALS

The assessment includes a review of relevant existing plans, studies and surveys to establish a baseline of current conditions and planning in place in the Township. Documents for this review were supplied by Ada Township Parks and Recreation department and included: **2017 Parks, Recreation and Land Preservation Plan; the Envision Ada 2013 plans, recent community surveys, park master plans, recent accessibility review and listings of current recreation programs and facilities.**

Based on the review of existing materials the following general comments were noted:

- The Township has both urban and rural characteristics. Three-quarters of the Township north and east of the Grand River is still predominantly rural. This is reflected in the location of the Township's recreation properties and the amenities they offer.
- The Township offers a variety of recreation opportunities. Leonard Field Park, Ada Township Park, Roselle Park, and Settlers Grove Riverside Park are developed with facilities such as playgrounds, ballfields, and tennis courts that facilitate more structured recreation. Township open space and preserves are less developed with no improvements or minimal improvements such as trails or gravel paths.
- Attractive natural character remains a preeminent goal for the Township's future.
- Ada's population has a general aging trend. Median population age has increased from 23 to 40 from 1970 to 2010. Providing programs and facilities for seniors is a growing trend.
- Family friendly programs such as Beers at the Bridge, a partnership between the Township and Ada Historical Society, have been very popular.
- According to 2015 U.S. Census estimates, of a total of 13,807 persons in Ada Township, 4.2%, or 581 persons, have a disability. What facilities exist for differing abilities? Providing recreation facilities and programming for those with disabilities is a recreation trend. Of the surrounding communities, our research found that Kentwood was the only one to specifically include recreation activities for those with disabilities.

ADA TOWNSHIP RECREATION PROPERTIES REVIEW

In reviewing the existing materials, the first step was to outline and update the inventory of recreation facilities located within Ada Township. The complete chart, found in **APPENDIX B: ADA TOWNSHIP RECREATION FACILITIES INVENTORY** lists recreation facilities in Ada Township and the associated amenities they offer. Programs offered at the properties, by Ada Township Parks and Recreation or Third-Parties, have been included to aid in cross-referencing. Third-Parties include all entities other than Ada Township that provide recreation programming.

The chart was compiled with information gathered from section "V. Inventory of Existing Parks, Natural Areas and Recreation Facilities" of the Township's *2017 Parks, Recreation and Land Preservation Plan*, review of Kent County's Parks, Trails and Natural Areas Master Plan, review of the Township Parks & Recreation Department website and seasonal flier, and communication directly with the Township Parks & Recreation Department. The acreage for these parks was first gathered through the means listed above and confirmed or updated with Kent County Parcel Viewer and GIS mapping.

Ada Township Parks and Recreation Department owns and manages 4 parks and 8 open space preserves comprising 500 acres. Including schools, County, State, and Federal properties, the Township contains over 1,000 acres of public land offering residents a variety of recreation options.

Property Review Highlights

The following are the major updates to park facilities within Ada Township that have occurred since the *2017 Parks, Recreation and Land Preservation Plan* inventory of existing parks, natural areas and recreation facilities.

Ada Township Park

During the spring and summer of 2018 the tennis courts at Ada Township Park were renovated. The front four tennis courts were renovated and remained as four tennis courts. The back two courts were converted into six pickle ball courts to meet community demand.

Settlers Grove Riverside Park

Settlers Grove Riverside Park is located on the Thornapple River. In 2017 the 3-acre park site was combined with Thornapple Confluence Preserve expanding the park property to approximately 19 acres. Construction of Settlers Grove Riverside Park is anticipated to finish in the spring of 2019. Park amenities include a playground, restrooms, paved paths, benches and trees, a deck/stage and the privately operated Ada Village General Store. This park is a component of Envision Ada 2013. The Township plans to partner with the General Store for programs held in the park.

Chief Hazy Cloud Park

In 2017 Kent County, with support from Ada Township, initiated the purchase of 125 acres adjoining Chief Hazy Cloud Park. This addition will increase the parks size to nearly 400 acres with over three miles of frontage on the Grand River. This expansion is across the river from Roselle Park, making a planned bridge and trail connection over the river, between the two parks possible. Kent County is in the process of updating their Parks, Trails, and Natural Areas Master Plan which includes a Preliminary Master Plan for the expanded Chief Hazy Cloud Park. Envisioned long-term improvements include development of trails and parking to improve park and river access. Trails include 12' wide multi-purpose, boardwalk, equestrian, and nature. A large part of the park is lowland with seasonal flooding which limits amenities that can be added to the park.

Pettis Avenue Parcel, owned by the Township, is surrounded by Chief Hazy Cloud Park. Consideration is being given to incorporate this 3-acre parcel into Chief Hazy Cloud Park.



Construction progress at Settlers Grove Riverside Park
Photo courtesy of Ada Village



Newly constructed playground at Ada Settlers Grove Riverside Park.
Photo courtesy of Ada Village



Newly constructed pickle ball courts at Ada Township Park.
Photo courtesy of Ada Village

ADA TOWNSHIP RECREATION PROGRAMS REVIEW

Recreation programs available to Ada Township residents include those administered and provided by Ada Township Parks & Recreation Department through career staff, seasonal staff, contract instructors, or trained volunteers; those administered by third-party organizations at Township facilities requiring Township facility rental and Township Parks and Recreation staff; and those administered by third-party organizations at private or school facilities. Third-Parties include all entities other than Ada Township that provide recreation programming. All programs are divided into the following seven (7) categories:

- 1) **Team Sports**
- 2) **Athletics and Fitness**
- 3) **Family Friendly**
- 4) **Youth Programs**
- 5) **Adult Programs**
- 6) **Themed Special Events**
- 7) **Volunteer**

These categories were developed by streamlining the Township Parks and Recreation Department’s existing program categories. Organized by the categories listed above, the charts below outline all programs, regardless of provider, available to Ada residents. The list of programs was developed through the Township Parks & Recreation Department website and seasonal flier, communication directly with the Township Parks & Recreation Department, and third-party provider websites. Programs are identified as being provided:

- 1) **Solely by Ada Township Parks and Recreation Department**
- 2) **By a third-party using Ada Township facilities**
- 3) **Solely by a third-party at a private facility.**

This differentiation is made to gain an understanding of how the community’s recreation programming needs are currently met. When cross-referenced with feedback received from stakeholder engagement, this provides the opportunity to see where gaps exist and how the demand can be met either by the Township Parks and Recreation Department or through partnership with third-party providers.

TEAM SPORTS PROGRAMS			
Program	Ada Township Parks and Recreation Dept.	Ada Township Facility/ Third-Party	Third-Party
High School Girls Fast Pitch	✓		
Men’s Slow Pitch	✓		
Coed Softball	✓		
Men’s Fast Pitch	✓		
Ultimate Frisbee		✓ Facility Rental	
AYSO Youth Soccer		✓ Facility Rental	
Instructional League Baseball			✓
Youth League Baseball			✓
Rookie League Baseball			✓
Minor League Baseball			✓
Major League Baseball			✓
Senior League Baseball (age 13-15)			✓
Shooting League			✓
Youth Football			✓

ATHLETICS AND FITNESS PROGRAMS			
Program	Ada Township Parks and Recreation Dept.	Ada Township Facility/ Third-Party	Third-Party
Grand Rapids Triathlon		✓ Facility Host	
Tennis		✓ Facility Rental & Instruction	
Pickle ball		✓ Facility Rental & Instruction	
Yoga		✓ Facility Rental & Instruction	
School-age kids shooting program			✓
Private Shooting Lessons			✓
Golf			✓
Horse Riding Lessons			✓
Equestrian Shows			✓
Forest Hills Aquatic Center Classes			✓
FAMILY FRIENDLY PROGRAMS			
Education	✓		
Adventure Outings	✓		
Kids' Garden	✓		
Tuesdays on the Lawn Concerts		✓ Ada Historical Society	
Beers at the Bridge Concerts		✓ Ada Historical Society	
YOUTH PROGRAMS			
Day Camps	✓		
½ Day Programs	✓		
Discovery Preschool	✓		
Adventure Outings	✓		
Kids' Garden	✓		
School Programs	✓		
Forest Hills Youth Enrichment Programs			✓
ADULT PROGRAMS			
Step It Up!	✓		
Community Education	✓	✓	
Forest Hills Adult Education Classes			✓
Forest Hills Senior Programs			✓
THEMED SPECIAL EVENTS PROGRAMS			
4 th of July Festival		✓ Township	
Ada Children's Fair		✓ Ada Business Association	
Santa Parade		✓ Ada Business Association	
VOLUNTEER PROGRAMS			
Boards & Committees	✓		
Stewardship Work Days	✓		
River Clean-Up Day	✓		
School & Scout Groups	✓		
Teen (Junior Counselor)	✓		

Summary of Ada Township 2017 Programs

The chart below outlines programs offered by Ada Township during 2017. This information was received from the Ada Township Parks and Recreation Department. Because their budget is separate from the Township Parks and Recreation Department, Themed Special Events are not included in the table below.

2017 Ada Township Recreation Parks and Recreation Programs				
	# of Events	Total Participants	Total Teams	Total Revenue
Softball/Baseball Leagues	8	1,448	99	\$35,541
Softball/Baseball Tournaments	5	1,020	106	\$4,819
Youth Programs	24	365	NA	\$11,035
Adult/Family Programs	7	355	NA	\$1,201
School Groups	19	1370	NA	\$1,788
Stewardship (Volunteers)	20	336	NA	NA
Program Totals	64	2,101	75	\$54,384
2017 Facility Rentals	116			\$6,740
2017 Totals	180			\$61,124

Softball/baseball and Youth Programs are the major programs offered by the Township Parks and Recreation Department.

Softball/Baseball

The softball/baseball season typically starts at the end of March and runs through the end of September. Over the last 10 years the number of softball/baseball games increased, with the highest number being in 2015. Over the last two years numbers have slightly decreased. It is not known why there has been a decrease, however, other regional agencies have noted a decline in softball. Softball/baseball did not feature in any stakeholder engagement comments, positive or negative.

Youth Programs

During 2017 Ada Township Parks and Recreation Department held 24 youth programs with a total of 365 participants. Age specific programs included: Discovery Days (ages 3-5 w/parent), Young Explorers (ages 5-7), Junior Naturalists (ages 8-11), Outdoor Adventurers (ages 10-13), Summer Day Camps (ages 6-11). Open programs included Kids Garden and Bike Decorating. The table below outlines participation per program. Young Explorers, Summer Day Camps, and Bike Decorating were the most well attended.

2017 Ada Township Youth Programs			
Program	# of Events	Total Participants	Average # Participants/Event
Discovery Days (ages 3-5 w/parent)	9	78	9
Young Explorers (ages 5-7)	3	63	21
Junior Naturalist (ages 8-11)	3	28	9
Outdoor Adventurers (ages 10-13)	2	13	7
Summer Day Camps (ages 6-11)	5	121	24
Kids Garden	1	8	8
Bike Decorating	1	54	54

Recreation Program Partnerships

The Township Parks and Recreation Department contracts organizations and resource specialists to enhance youth programs. Partner organizations include Blandford Nature Center, AAA Canoes, Averill Historical Museum staff and volunteers. Individual resource specialist partners include art teachers, soccer coaches, and naturalists. These partnerships are a valuable resource in both supplementing and enhancing what the Township offers its residents

PUBLIC OPINION SURVEY - 2017 RESULTS REVIEW

The Review of Existing Plans, Studies, and Surveys included gaining an understanding of the *2017 Parks, Recreation and Land Preservation Plan Public Opinion Survey*. This is the most recent recreation-focused survey completed for the Township and was conducted by Ada Township Parks and Recreation electronically through email and Township website and Facebook posts.

The results, included in the *2017 Parks, Recreation and Land Preservation Plan* appendix, informed the development of goals, objectives, and action program included in the Plan. For this Recreation Needs Assessment, the *2017 Parks, Recreation and Land Preservation Plan Public Opinion Survey* results were reviewed to inform questions posed during Stakeholder Engagement. The intention was to identify topic areas of stakeholder input not previously gathered by the Township and to identify topic areas that had been identified by the Township but needed further expansion. Review of the *2017 Parks, Recreation and Land Preservation Plan Public Opinion Survey* results generated the following topic areas:

- Best use of public green space on north side of Headley Street
- Recreation Facilities and Programs used outside of Ada Township
- Dream Big-Desired Recreation Facilities inside Ada Township
- Quantity of green space in Ada Township
- New Park and Playground Needs
- Improvements to Existing Recreation Facilities in Ada Township
- Roadblocks/problems to Providing Recreation Opportunities in Ada Township
- Recreation Program Needs

Using the topic areas above, specific stakeholder questions were developed. This is further outlined in **SECTION 05 STAKEHOLDER ENGAGEMENT** of this report.

ENVISION ADA 2013 REVIEW

Headley Commons

Recommendations from Envision Ada 2013 resulted in a revised alignment of Headley Street delineating open space initially conceptualized as a formal green amenitized by a civic building. Ada Township's *2017 Parks, Recreation and Land Preservation Plan* included concepts plans for the Headley Commons site with potential amenities including retention of the open area for large community activities, a facility to house a farmer's market, a community building, potential library, an ice rink, and a community and/or kids garden.

In October 2017, the Township Board decided to move forward locating a community center/library on the south side of Headley Street from Headley Commons. The Amy Van Andel Library and Community Center will be a new branch of the Kent District Library (KDL) system. In addition to the library component, the center will offer a variety of flexible multi-purpose spaces for community meetings including; small study rooms, conference rooms and meeting rooms for groups ranging from 2 persons to 160 persons.

The Concept Plan for Headley Commons should be updated based on the new location of the library/community center and public input received during this assessment. Public input regarding the Headley Street property is further outlined in the Stakeholder Engagement section of this report.

03 REVIEW OF NATIONAL METRICS

This assessment includes a review of national recreation metrics and standards as presented in the National Park and Recreation Association's (NRPA) *2018 NRPA Agency Performance Review*. This annual report seeks to provide park and recreation professionals with a benchmarking tool to assist with effective management of resources and facilities. The data and insights in the 2018 Review were collected through an NRPA Agency Performance Survey of 1,069 park and recreation agencies.

The following outlines how Ada Township compares with other similar-sized communities and provides a starting point for the development of recreation facility and program goals that meet the unique needs and demands of the Township's residents.

Comparisons were made using the United States Census Bureau's 2010 Population Census and 2017 Population Estimate for Ada Township. Inclusion of the 2017 Population Estimate provides a more accurate picture of current conditions with the 2010 Population Census as a known baseline.

Ada Township Population

2010 Population Census: 13,142

2017 Population Estimate: 14,528

Ada Township Recreation Facilities

The parks listed are facilities owned and operated by Ada Township. There are eleven (11) facilities in total comprising 500 acres. This information was gathered beginning with the "Recreation Inventory" component of the Township's *2017 Parks, Recreation and Land Preservation Plan*. The list was updated through review of the Township Parks & Recreation Department website and seasonal flier, and communication directly with the Township Parks & Recreation Department.

Township Parks and Preserves

1. Ada Township Park
2. Leonard Field Park & Ada Covered Bridge
3. Roselle Park
4. Settlers Grove Riverfront Park
5. Carl Creek Crossings Preserve
6. Carl Creek Wetlands Preserve
7. Grand River Nature Area & Preserve
8. Grand River View Preserve
9. Knapp Corner Preserve
10. Grand River-Fulton Street Preserve
11. Pettis Avenue Parcel
12. Shady Drive Preserve

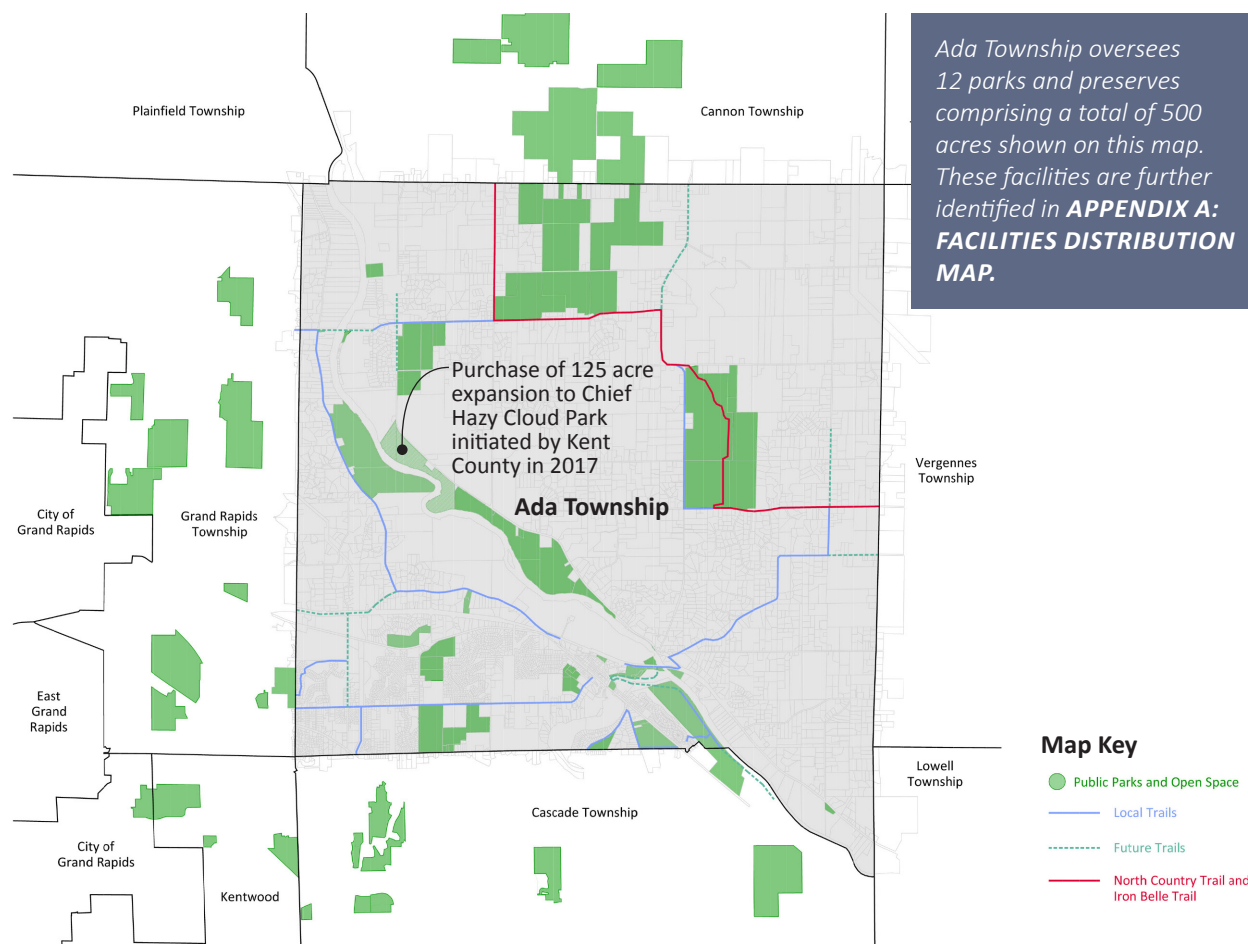
RECREATION FACILITIES COMPARISON

The typical agency has 18 parks comprising a total of 413 acres under its watch. Ada Township oversees 12 parks and preserves comprising a total of 500 acres. While the number of parks under the Township ownership is less than the typical similar-sized agency, the total acreage of parks is well above the average. This indicates that the Township has sufficient acreage but it is concentrated in larger parks and may not be evenly distributed throughout the community. This is demonstrated in the Recreation Facilities Map below. The expansion of Chief Hazy Cloud Park and the expansion of existing trails will assist with even distribution and access throughout the Township.

Residents per Park (Ada Township Parks)		
NRPA Less than 20,000 Population	Ada Township 2010	Ada Township 2017 Estimate
1,318	1,195	1,321

According to the NRPA 2018 Agency Performance Review, the smallest agencies, those serving fewer than 20,000 residents, typically have 10.8 acres per 1,000 residents. Ada Township oversees 500 acres of park land or 38.8 acres per 1,000 residents. Ada Township exceeds the average for jurisdictions with fewer than 20,000 residents by approximately 28 acres per 1,000.

Acres of Park Land per 1,000 Residents (Ada Township Parks)		
NRPA Less than 20,000 Population	Ada Township 2010	Ada Township 2017 Estimate
10.8	38.5	35.7



Recreation Agency Facility Amenities

The table below groups communities by density (residents per square mile). These groups are: less than 500; 500 to 1,500; 1,500 to 2,500; more than 2,500 residents per square mile. Per the United Census Bureau, Ada Township land area is 36 square miles and its population density is 365 people per square mile. This places the Township in the NRPA's comparative category of agencies with a population density of less than 500 people per square mile.

The facilities in the table are listed in descending order from most prevalently to least prevalently offered by park and recreation agencies. A majority of agencies provide playgrounds and basketball courts. Ada Township Parks and Recreation facilities largely feature passive recreation opportunities aside from Leonard Field Park, Ada Township Park, Roselle Park, and Settlers Grove Riverside Park. Recreation facilities managed by other entities generally make up the difference. This is demonstrated by the two right columns that include facilities within Ada Township managed by entities other than the Township. This includes Kent County, State of Michigan Department of Natural Resources, schools, and private providers.

Including all public and private facilities, Ada Township generally provides sufficient resident-to-facility ratio in comparison to similarly dense communities. A dog park is the only facility not found in Ada Township that is found in a majority (50% or more) of similarly dense communities. These comparisons in conjunction with stakeholder engagement informed recommendations found in the Recreation Facilities and Program Recommendations portion of this report. The complete matrix of facilities and their related amenities can be found in **APPENDIX C: RECREATION FACILITIES MATRIX.**

Outdoor Parks and Recreation Facilities - Number of Residents per Facility					
	% of Agencies	NRPA Less than 500	Ada Township 2010	Including Other Entities 2010	Including Other Entities 2017
Playgrounds	92	6,132	4,381	1,314	1,453
Basketball Courts	83	7,869	13,142	4,381	4,843
Tennis Courts (outdoor only)	77	5,462	3,286	526	581
Diamond fields: baseball- youth	75	6,628	4,381	1,643	1,816
Diamond fields: softball- adult	66	10,957	4,381	1,877	2,075
Rectangular fields: multi-purpose	63	9,043	6,571	2,628	2,906
Diamond fields: softball- youth	59	10,495	4,381	1,877	2,075
Diamond fields: baseball- adult	55	15,000	4,381	1,877	2,075
Dog Park	55	51,804	0	0	0
Swimming Pools (outdoor only)	52	42,344	0	13,142	14,528
Totlots	47	19,766	0	13,142	14,528
Rectangular fields: soccer field- youth	47	5,584	0	1,643	1,816
Community Garden	46	37,571	0	0	0
Rectangular fields: soccer field- adult	42	10,250	13,142	1,877	2,075
Multi-use courts- basketball, volleyball	38	12,757	13,142	1,877	2,075
Diamond fields: tee-ball	38	11,270	4,381	4,381	4,843
Rectangular fields: football field	38	21,750	0	6,571	7,264
Ice ring (outdoor only)	16	11,168	0	0	0
Multipurpose synthetic field	15	35,238	0	6,571	7,264
Skate park	14	27,375	0	0	0
Rectangular fields: lacrosse field	11	12,522	0	0	0
Rectangular fields: cricket field	9	199,889	0	0	0
Overlay field	6	10,820	0	6,571	7,264
Rectangular fields: field hockey field	4	20,893	0	0	0

RECREATION PROGRAMMING COMPARISON

The core programs offered by Ada Township Parks and Recreation generally align with the top key programming offered by similar-sized Parks and Recreation agencies surveyed by NRPA.

NRPA Programming Offered by Park and Recreation Agencies (ranked by percentage from highest to lowest)	Programming Offered by Ada Township Parks and Recreation Department (ranked by percentage from highest to lowest)
1. Team Sports	1. Team Sports (Softball/Baseball)
2. Theme Special Events	2. Youth
3. Social Recreation Events	3. Adult/Family
4. Health and Wellness Education	4. School Groups
5. Safety Training	5. Volunteers
6. Aquatics	
7. Individual Sports	
8. Trips and Tours	
9. Racquet Sports	
10. Performing Arts	
11. Martial Arts	
12. Cultural Crafts	
13. Virtual Arts	
14. Natural and Cultural History Activities	
15. Golf	

PARKS AND RECREATION AGENCY RESPONSIBILITY COMPARISON

Ada Township's Parks and Recreation Department's responsibilities are in line with the key responsibilities of park and recreation agencies. It is noted that these responsibilities extend beyond the traditional agency roles of operating parks/facilities and providing recreation programming services.

Key Responsibilities of Park and Recreation Agencies		
Responsibility	% of Agencies	Ada Township
Operate and Maintain Park Sites	95	✓
Provide Recreation Programming and Services	92	✓
Have Budgetary Responsibility for its Administrative Staff	89	✓
Operate and Maintain Indoor Facilities	88	✓
Operate, Maintain or Manage Trails, Greenways and/or Blueways	75	✓
Conduct Major Jurisdiction-wide Special Events	73	✓
Operate, Maintain, or Manage Special-Purpose Parks and Open Space	66	✓
Operate and Maintain Non-Park Sites	63	✓
Include in its Operating Budget the Funding for Planning and Development Functions	62	✓
Administer or Manage Tournament/Event Quality Outdoors Sports Complexes	55	

PARKS AND RECREATION AGENCY STAFFING COMPARISON

Ada Township employs 5.5 full-time equivalent employees (FTEs). Agencies serving similar-sized communities have a median of 9.8 FTEs. The Township’s Parks and Recreation Department FTEs are within the range of FTEs for similar-sized communities which is ranges from the lower quartile of 4.8 FTEs to the upper quartile of 18.1 FTEs.

It should also be noted that, in addition to its staff, the Township Parks and Recreation Department relies on volunteers to assist with running recreation programs and to supplement facility maintenance through Stewardship Days. In 2017, sixty-two individual volunteers provided 589 volunteer hours. Volunteers are a valuable resource but are not a sustainable way to meet agency staffing needs.

Stakeholder engagement indicated a need for additional employees. This is further outlined in the Recommendations section of this report.

Parks and Recreation Agency Staffing: Full-Time Equivalents (FTE)	
NRPA Less than 20,000 Population	Ada Township
9.8	5.5

Ada Township Parks and Recreation Agency Staffing

1. Parks Director (full-time)
2. Maintenance Staff Person (full-time)
3. Maintenance Staff Person (full-time)
4. Maintenance Staff Person (full-time)
5. Park Worker, Gates (part-time)
6. Administrative Assistant (part-time)
7. Recreation Programmer Softball/Sports (seasonal, part-time)
8. Recreation Assistant Softball (part-time)
9. Recreation Assistant Softball (part-time)
10. Recreation /Education Programs Intern (seasonal, part-time)

PARKS AND RECREATION AGENCY BUDGET AND EXPENDITURES COMPARISON

Annual Operating Expenditures

The Township’s annual operating expenditure is below the range of agencies serving a community with less than 500 residents per square mile. The range is \$545,254 to \$1,426,272 for total operating expenditures.

Annual Operating Expenditures (by population per square mile)	
NRPA Less than 500 Median	Ada Township 2012-2017 Average
\$1,426,272	\$398,321

Annual Operating Expenditures Per Capita

The Township’s operating expenditure per capita is within the range of agencies serving communities with a population density less than 500 residents per square mile. The range is \$16.01 to \$86.23 with a median of \$41.23.

Annual Operating Expenditures per Capita (by population per square mile)	
NRPA Less than 500 Median	Ada Township 2012-2017 Average
\$41.23	\$30.31

Annual Operating Expenditures Per Employee

The Township's operating expenditures per employee is within the range for agencies serving similarly dense communities. The range is \$61,492 to \$121,312 of annual operating expenditures per full-time employee.

Annual Operating Expenditures per Employee (by population per square mile)	
NRPA Less than 500 Median	Ada Township 2012-2017 Average
\$85,694	\$72,422

PARKS AND RECREATION AGENCY FUNDING

Park and Recreation Revenue Per Capita

On average, the Township generates \$51,500 per year through program fees and facility rentals. This equates to \$3.92 generated per Ada Township resident. This is within the range of agencies serving similar sized communities. The range is \$1.72 to \$27.56 revenue generated per capita.

Park and Recreation Revenue per Capita (by population per square mile)	
NRPA Less than 500 Median	Ada Township 2012-2017
\$7.27	\$3.92

Cost Recovery

On average, the Township spends \$398,321 on operating expenses. The \$51,500 in revenue generated annually through program fees and facility rentals represents a 13% cost recovery of operating expenses. This is within the range of agencies serving similarly dense communities. The range is 8.5% to 48.0% cost recovery.

Cost Recovery (by population per square mile)	
NRPA Less than 500 Median	Ada Township 2012-2017
20.9%	13%

Five-Year Capital Budget Spending

The Township's five-year capital budget spending for 2012-2017 falls within the typical range for communities with less than 500 residents per square mile. The range is \$250,000 to \$4,843,350.

Five-Year Capital Budget Spending (by population per square mile)	
NRPA Less than 500 Median	Ada Township 2012-2017
\$1,250,000	\$2,761,948

NATIONAL PARKS AND RECREATION TRENDS

A 2018 survey in the June issue of *Recreation Management Magazine* article titled *A Look at Trends in Parks & Recreation* found that the following were the most commonly planned amenity additions for parks in 2018:

1. Splash play areas (planned by 31.4 percent of parks respondents who will be adding features)
2. Dog parks (20.8 percent)
3. Fitness trails and outdoor fitness equipment (20.6 percent)
4. Walking and hiking trails (17.8 percent)
5. Synthetic turf sports fields (16.9 percent)
6. Playgrounds (16.4 percent)
7. Disc golf courses (15.6 percent)
8. Park shelters (15.3 percent)
9. Park restroom structures (13.9 percent)
10. Bike trails (13.9 percent)

The article also noted that the percentage of survey respondents adding splash play areas, dog parks, walking and hiking trails, and disc golf courses showed an increase from 2017 to 2018. This indicates that national popularity of these amenities is a steady trend. These trends are very similar to public input received during this recreation needs assessment.

The same article found the following programs as the most commonly planned program additions for parks in 2018:

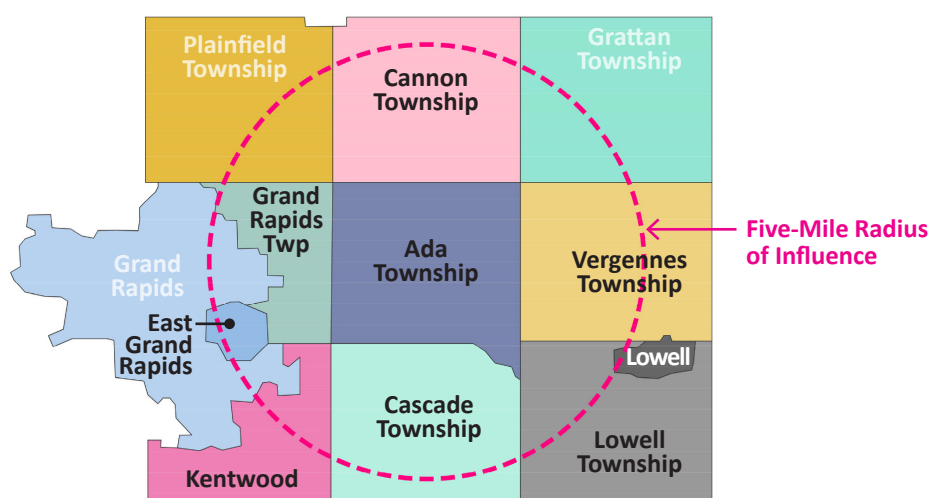
1. Environmental education programs (no change from 2017)
2. Fitness programs (up from No. 3 in 2017)
3. Teen programming (down from No. 2 in 2017)
4. Educational programs (up from No. 5 in 2017)
5. Mind-body balance programs such as yoga (down from No. 4 in 2017)
6. Day camps and summer camps (up from No. 8 in 2017)
7. Special needs programs (did not appear in 2017 in 2017)
8. Adult sports teams (did not appear in 2017)
9. Individual sports activities like running clubs (did not appear in 2017 in 2017)
10. Sport-specific training like tennis or golf lessons (did not appear in 2017)

These program trends are also in line with comments received during the community engagement segment of this recreation needs assessment. Workshop-in-a-Box respondents indicated a desire for organized fitness programs as well as programs for all age groups and blended age groups.



04 REVIEW OF NEIGHBORING COMMUNITIES

This assessment included the development of a matrix of recreation facilities, amenities, programs, and services available in neighboring communities to establish a benchmark of regional standards and adjacent properties that are available to Ada Township Residents. The full matrix can be found in **Appendix D: Neighboring Community Recreation Facility and Program Inventory**. Facilities located within a five-mile radius of influence from the center of Ada Township were determined to be geographically close enough to be conveniently used by Township residents. The selection of adjacent communities to include was corroborated with input received through stakeholder engagement regarding recreational facilities and programs used outside of Ada Township. Some of the most frequently listed facilities included MVP in Grand Rapids Township and Kentwood, Cascade Library, Shaggy Pines Dog Park in Cascade Township, and Mary Free Bed YMCA in Cascade Township. The neighboring communities in this assessment include: Grand Rapids Charter Township, East Grand Rapids, Kentwood, Cascade Township, Lowell Charter Township, Vergennes Township, and Cannon Township.



To make accurate comparisons, the chart below lists each adjacent community's population, land area, and population density per the United State Census Bureau's 2010 census. Ada Township is most similar in population, land area, and population density to Cascade and Canon Townships. Although Grand Rapids Charter Township has a similar population, its density is three times greater than Ada Township.

Community	Population (2010)	Land Area mi ²	Density person/ mi ²
Ada Township	13,142	36.1	355.2
Grand Rapids Charter Township	16,661	15.4	1,081.8
East Grand Rapids	10,694	2.93	3,644.9
Kentwood	48,707	20.90	2,300
Cascade Township	17,134	33.9	492.4
Lowell Charter Township	5,949	32.6	178.6
Vergennes Township	4,189	34.7	118.3
Cannon Township	13,336	35.9	359.5

* Communities highlighted in gray are most similar to Ada Township in population, land area, and population density.

Recreation Facility Comparison

Ada Township owns and operates 11 parks, Cascade Township owns and operates 6 parks, Cannon Township owns and operates 2 parks. Compared to similar-sized adjacent communities, Ada Township owns and operates more recreation facilities. This is in keeping with similar-sized communities per the 2018 NRPA Agency Performance Review.

Residents per Park (Township Owned Parks)			
NRPA Less than 20,000 Population	Ada Township 2010	Cascade Township 2010	Cannon Township 2010
1,318	1,195	2,856	6,668

For similar-sized communities, Ada Township exceeds both adjacent communities and national median per the 2018 NRPA Agency Performance Review in the acres of park land per 1,000 residents.

Acres of Park Land per 1,000 Residents (Township Owned Parks)			
NRPA Less than 20,000 Population	Ada Township 2010	Cascade Township 2010	Cannon Township 2010
10.8	38.8	23.8	3.1

Recreation Program Registration

Ada Township Parks and Recreation Department offers phone, email, walk-in, or mail-in registration for their recreation programs. Online registration is not currently available. Of the adjacent communities that offer recreation programs through their Parks and Recreation Department, both East Grand Rapids and Kentwood offer online registration.

Recreation Program Registration Method					
Community	Online	Phone	Walk-in	Mail-in	Email
Ada Township	-	✓	✓	✓	✓
East Grand Rapids	✓	✓	✓	✓	-
Kentwood	✓	✓	✓	✓	-

REGIONAL PARKS AND RECREATION TRENDS

During a session titled “A Tale of Two Parks Departments: Kalamazoo and Portage,” at the 2018 Michigan American Society of Landscape Architects (ASLA) Annual Meeting, Sean Fletcher, Kalamazoo Parks and Recreation Director and Kathleen Hoyle, City of Portage Parks, Recreation and Senior Citizens Services Director both stated that the recreation trends in their communities include a demand for pickle ball, kayaking, outdoor gyms, and trails. Sean Fletcher stated that softball participation had declined and there is a increased demand for multi-use fields for lacrosse, rugby, and ultimate Frisbee.

SUMMARY OF FINDINGS

Relative to similar-sized neighboring communities, Ada Township is in keeping with providing a variety of recreation opportunities and programs. Kentwood’s population is nearly four times that of Ada Township; however, Kentwood Parks and Recreation provides a good regional example in terms of the diversity of facilities and programs. Additionally, of the neighboring communities, Kentwood is the only one to offer a broad range of programs and online registration.

05 STAKEHOLDER ENGAGEMENT

The Ada Township Recreation Needs Assessment included three primary forms of stakeholder engagement. These were: an online tool called **Community Remarks®**; a **Leadership Workshop Cafe**; and a self-guided input method called **Workshop in a Box**.

STAKEHOLDER ENGAGEMENT OBJECTIVES

Stakeholder engagement objectives were to:

1. Gain broader stakeholder input than achieved with previous surveys;
2. Provide for one-on-one consultation with individual stakeholders;
3. Interaction with stakeholder groups and the public;
4. Include the use of Ada Township's web presence and social media to communicate and facilitate an ongoing dialogue with the community.

STAKEHOLDER ENGAGEMENT METHODS

Community Remarks® On-line Tool

Community Remarks® was launched on July 3, 2018, and was active through July 22, 2018. The tool interfaced with Google Maps, and participants were able to place comments within six topics on specific locations, and were able to leave general comments as well. Topics included:

- Existing Parks and Facilities
- Parks, Playgrounds, and Recreation Facilities-new locations and ideas
- Trails-new locations and connections
- Proposed Green space-large and small locations
- Headley Street Property
- Recreational Facilities Used Outside of Ada Township

A total of 350 comments were posted on the site; this number represents the original comments as well as the "likes" and "dislikes" that were posted on any individual comment. No comments were posted for the topic "Recreational Facilities Used Outside of Ada Township."

Included in the results of Community Remarks® is a document named Community Remarks® Complete List of Comments. The purpose of this document is to include an interactive web-based ID which links any comment to its location within Ada Township. When clicking on the link, the user is brought directly to a location on Google Maps where the original pin was dropped when the participant made a comment.

Detailed information regarding the topics and results are found in the Community Remarks® On-line Survey Summary found in the Appendix.

Leadership Workshop Cafe

A Leadership Workshop Cafe was held on August 22, 2018. Approximately 35 community leaders participated in this event, which was by invitation only. Representation included persons from Ada Township Board of Trustees; Ada Township Planning Commission; Ada Township Parks, Recreation, and Land Preservation Advisory Board; the Ada Downtown Development Authority and Citizens Council; Ada Business Association; Forest Hills Public Schools Community Services; Michigan Department of Natural Resources-Wildlife Division; Lowell Arts; Kent County Parks Department; Ada Historical Society; Ada Township Parks and Recreation staff; and youth representation from Forest Hills Public Schools.

The Leadership Workshop Cafe participants were asked to provide comments on eight topics relating to parks and recreation programs and amenities in Ada Township; recreational facilities used outside the Township; and on roadblocks or problems in providing recreation or access to recreation in Ada Township.

Results of the Leadership Workshop Cafe by topic, along with primary recommendations that emerged from each topic, are included in the Ada Township Recreation Needs Assessment Leadership Workshop Cafe Results and Primary Recommendations found in the Appendix.

Workshop in a Box

The Workshop in a Box self-guided input method was completed by three civic groups: The Ada Rotary, the Adacraft Commons Association, and the O.W.L.S group (Older Wiser Lively Seniors) from St. Robert of Newminster Church. These three groups represented a cross-section of the population of Ada Township, including persons with business interests, a homeowners' association, and a senior group associated with a religious institution. A total of 31 persons were involved in the Workshop in a Box method.

Information sought from the participants of Workshop in a Box was similar to that sought from participants of the Leadership Workshop Cafe. Results obtained from the three groups were extensive; grouping of common ideas within groups was not practical, except in the case of information gathered for the Headley Street Property. However, the results from all three groups were combined, and this shows the common themes and ideas that emerged from the three groups when taken together as a whole.

The complete results of the Workshop in a Box method are included in the Ada Township Recreation Needs Assessment Workshop in a Box Results found in the Appendix.

SUMMARY OF FINDINGS

Common Themes

Input gained from the stakeholder engagement methods covers a broad range; to attempt to combine all the data from the three methods of input may result in a diminishing of the results; rather, Ada Township is encouraged to examine the results of each input method and to use the data to inform future decisions regarding parks, recreation facilities and amenities, and recreation programming.

Common themes are evident in the results of the stakeholder input, and in general some of these themes include, but are not limited to, the following:

- High value for water access and development of water trails
- High value for land-based trails, including bike paths, and a desire to expand and improve the trail system
- A strong desire for water access in the form of a splash pad or pool
- A desire for programs for all age groups and blended age groups
- High value for organized fitness programs and opportunities
- A desire for more green space, both large and small
- Continued discussion on use of the Headley Street Property is indicated
- A variety of recommendations, primarily public use, were given in regard to the best use for the Headley Street Property
- A recognition that some activities that are used outside the Township will continue to be used
- Moderately strong desire for a location for ice skating

Additionally, unique ideas were presented that may have been mentioned less often, but could be considered by Ada Township if a champion for a specific idea emerges or staff becomes available; one example is to provide a rink for Bicycle Polo; another is to offer a competition similar to Ninja Warrior.

06 RECOMMENDATIONS

The goal of the Recreation Needs Assessment was to provide recommendations for potential future recreation amenities in Township parks and to provide a guide for planning future recreation programs and support services.

The following list of recreation facility and program recommendations has been developed based on analysis of information gathered through the following methods:

1. Review of Existing Plans, Studies, and Surveys: **“What are current conditions in Ada Township?”**
2. Review of National Metrics, Standards, and Trends: **“How does Ada Township compare to similar sized communities on a National Level?”**
3. Review of Neighboring Communities: **“How does Ada Township compare to neighboring communities?”**
4. Stakeholder Engagement: **“How do residents, civic groups, and community leaders view Ada Township recreation program and facility offerings?”**

RECOMMENDATION: **TRAILS**

Community engagement for this recreation needs assessment indicated a desire for new trail locations and connections. One of the top four high-energy ideas from the Leadership Cafe was, “connectivity to neighboring trails, more than currently available.” This echoes input received in the *2017 Parks, Recreation and Land Preservation Plan Public Opinion Survey*, where respondents ranked non-motorized trails and bike paths as the most frequently used of all recreation options.

Aside from the recreation opportunity they provide, trails perform the key function of connecting recreation properties, thereby creating an accessible network that promotes the use of open space. Further development of the trail system will improve access for all Ada residents both within the Township and outside to regional recreation offerings.

A planned bridge between Chief Hazy Cloud and Roselle Park is an important part of this system, providing a connection across the Grand River.

It is recommended that the Township develop an overall strategy, building on the 2017 Trail System to establish an interconnected network of bike lanes, bike paths, pathways, hiking trails, water trails, and equestrian trails linking recreation facilities and trails systems within the Township and regionally.

RECOMMENDATION: **WATER ACCESS**

The Grand and Thornapple Rivers are two of Ada’s greatest recreation assets and providing easy access to them is critical. Community engagement highlighted a strong demand for greater access to the rivers and development of water trails. The Kent County Water Trails System within Ada has boat launch locations at the Knapp Avenue and Fulton Street DNR Ramps. There are hand launch locations at Ada Dam and Chief Hazy Cloud Park. As it expands, it is anticipated that Chief Hazy Cloud Park amenities will include a focus river-based recreation. Additional locations for water access launches should be explored as the park is further developed.

It is recommended that a study be conducted to determine the best parks and open space for additional boat and hand launch locations to facilitate greater access to the river.

RECOMMENDATION: **AMENITIES**

From community engagement, the primary recurring desired amenity additions were a splash pad, dog park, pickle ball, community garden, disc golf, and ice skating. Based on community input, these items can be added to existing properties where uses and user groups are compatible.

Splash Pad

Community input and national trends indicate that a splash pad is a highly desired recreation facility. It is recommended that a study be conducted to determine the best location for a splash pad within the Township. Community input strongly favored public use as the best use for the Headley Street property. As such, this is a potential location for a splash pad in conjunction with other public amenities that could support and enhance the future adjacent Township Library.

Dog Park

Community input expressed a desire for a dog park within the Township. Dog parks enable dogs to socialize and exercise off-leash. They can be urban or in a park setting and can vary in size and complexity. Cascade Township park is a good example of adding an off-leash dog area to an existing park. A 1-acre dog park with separate areas for smaller and larger dogs was added in 2016. Wags West Dog Park, a half-acre facility in Traverse City is a good example of a smaller dog park with areas for both large and small dogs.

It is recommended that dog park size and location within the Township be determined through a review of current park capacity and community input.

Pickle ball

In the summer of 2018, two tennis courts at Ada Township Park were converted into six pickle ball courts. It is recommended that the Township assess the impact the new pickle ball courts have on demand before determining if additional courts are needed.

Community Garden

Community input indicated a strong desire for a community garden at the Headley Street Property. This central location is appropriate and could be included as a program element for future development of the Headley Street site.

Disc Golf

Across the community engagement methods, there was a repeated desire for a disc golf course. Disc golf courses are a relatively low-impact, low-cost amenity that can easily be added to under-utilized areas of existing parks such as floodplains. Local clubs hosting tournaments can be an additional source of parks and recreation revenue through facility rental and park-user fees. A good example is Burchfield Park in Holt, Michigan. The park hosts two 18-hole disc golf courses. A daily disc golf pass is \$4 per person for adults. Disc rental is available for an additional fee. Recently Burchfield Park hosted the 2018 Professional Disc Golf Association United States Women's Championships, a three-day event with 159 total professional and amateur players. With the expansion of Chief Hazy Cloud Park, this could be a good location for a disc golf course.

Ice Skating

Both permanent and temporary ice skating rinks are costly to build and operate. It is recommended that a study be conducted to determine if an ice rink is logistically and financially feasible for the Township.

Outdoor Fitness Equipment

On a national level, outdoor fitness equipment ranked as the third most commonly planned amenity addition for parks in 2018. Community input for this assessment indicated a strong desire for both fitness programs and fitness opportunities. A potential partnership for the Township is with the National Fitness Campaign (NFC). NFC partners with cities to secure funding for Fitness Courts, an outdoor bodyweight circuit training system designed for adults of all ages and abilities.

RECOMMENDATION: RECREATION PROGRAMMING

Workshop-in-a-Box respondents indicated a desire for organized fitness programs as well as programs for all age groups and blended age groups. Fitness programs are a top national trend. Currently the Township does not provide targeted senior or teen programs. Further study of community recreation programming demands should be conducted to better determine additional age-specific programs that should be offered.

The future Amy Van Andel Library and Community Center will offer the Township partnership opportunities to help meet resident demand for additional recreation programming.

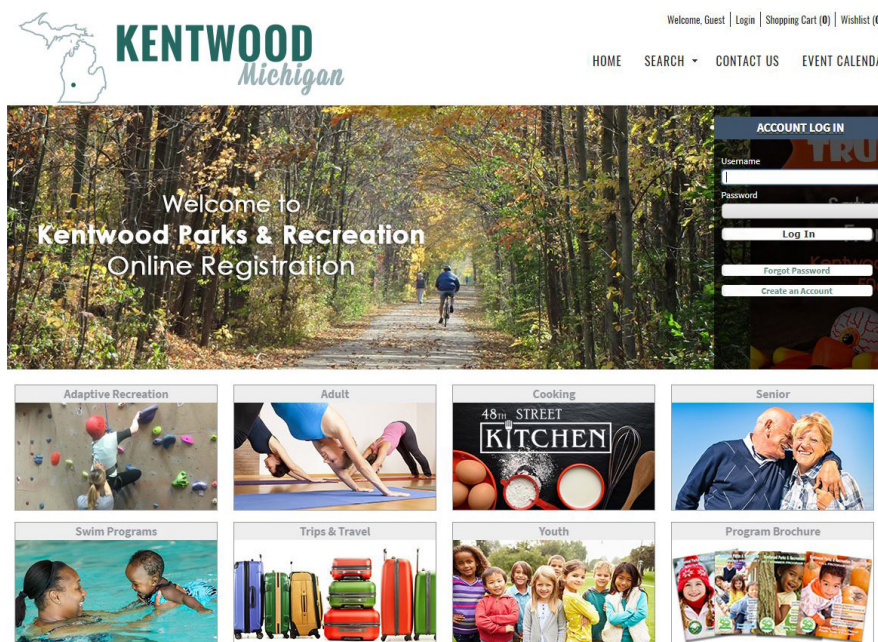
RECOMMENDATION: TECHNOLOGY

Currently Ada Township Parks and Recreation Department requires residents to register and pay in person for recreation programs and sports leagues. Additionally, credit card payments for program registration are only possible in person at the Township Hall. The public opinion survey conducted as part of the *Ada Township 2017 Parks, Recreation and Land Preservation Plan* had an overwhelming response in favor of online registration for recreation/education programs. Community engagement performed for this study echoed this response. It was noted that it is difficult to register for programs and rentals and there is no online registration process.

Additionally, the *Ada Township 2017 Parks, Recreation and Land Preservation Plan* Action Plan included software and technology improvement goals of 1) adding an additional computer, 2) adding capacity for credit card payments and on-line registrations, 3) adding facility management and data base software, 4) increasing integration of Township software, data and GIS systems, and 5) increasing staff access to computers.

Manual processing is time-consuming for Parks and Recreation staff. Online registration and payment is more convenient and increases accessibility for residents. Increased accessibility promotes increased participation and revenue.

In addition to providing online registration and payment, parks and recreation software can provide extensive reporting and statistical data that can be used to increase efficiency and productivity as well as inform planning. Parks and recreation software can also assist with cost recovery analysis for programs, events, and rentals.



Example: Online Registration, Kentwood, Michigan

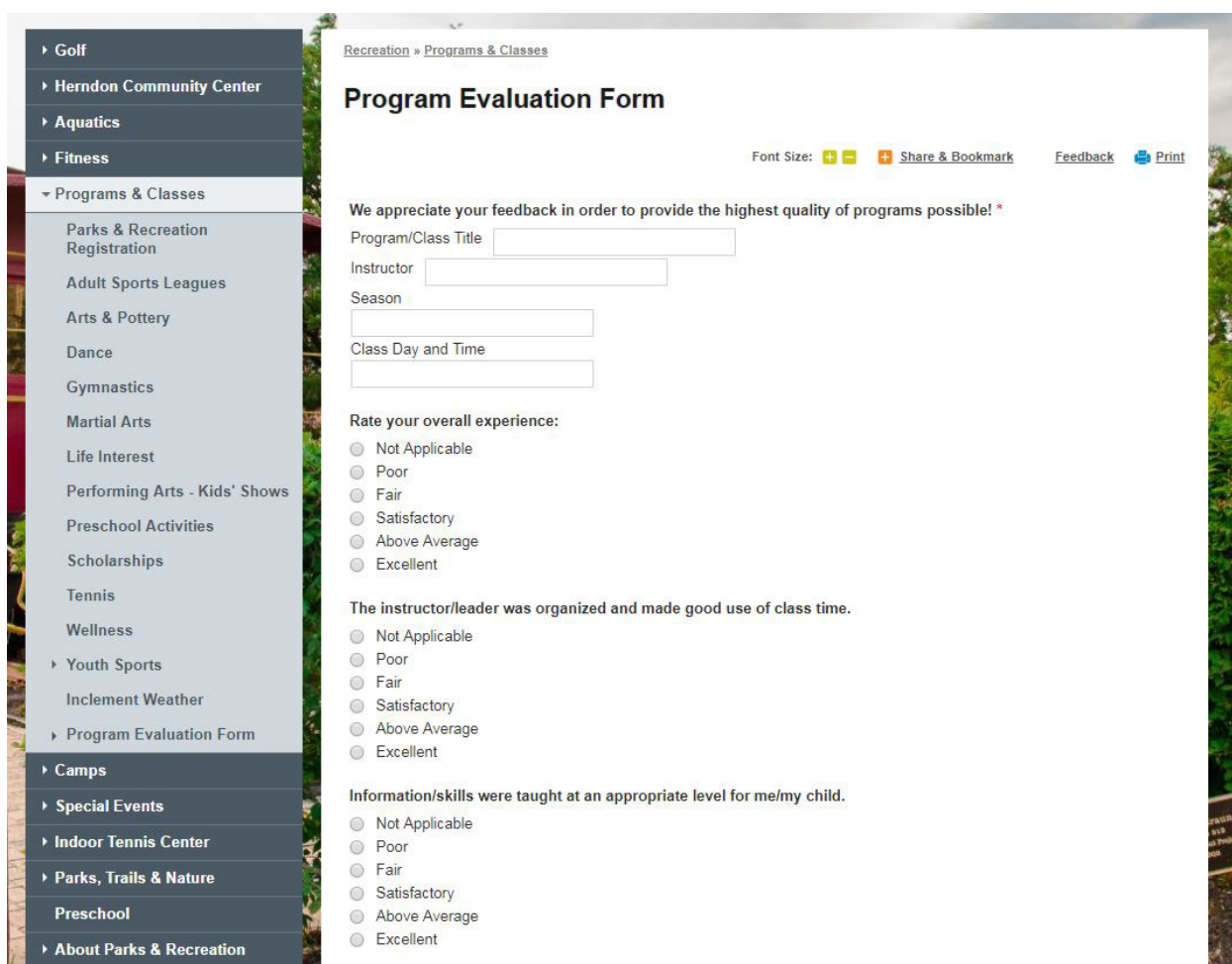
RECOMMENDATION: **HEADLEY STREET PROPERTY**

The Advisory Board expressed a specific desire to seek public input on the best use of the Headley Street Property, a 3-acre piece of land located between Headley Street and Fulton Street (M-21). The overwhelming public response on to how to use this property was as public space. An additional study with community engagement specific to this property would assist in developing a plan best suited for the community.

RECOMMENDATION: **COMMUNITY ENGAGEMENT**

In both the Ada Township 2017 Parks, Recreation and Land Preservation Plan and this Recreation Needs Assessment, it was noted that community engagement participation was low. The Ada Township *2017 Parks, Recreation and Land Preservation Plan* had roughly 321 respondents. This Recreation Needs Assessment included 350 comments through Community Remarks®, 35 participants in the Leadership Workshop Cafe, and 31 participants in the Workshop in a Box.

Seeking more frequent feedback from facility and program users may help to achieve more community input. It would also allow for periodic micro adjustments to improve facility and program function. This could be achieved through an Online Program or Facility Evaluation Form.

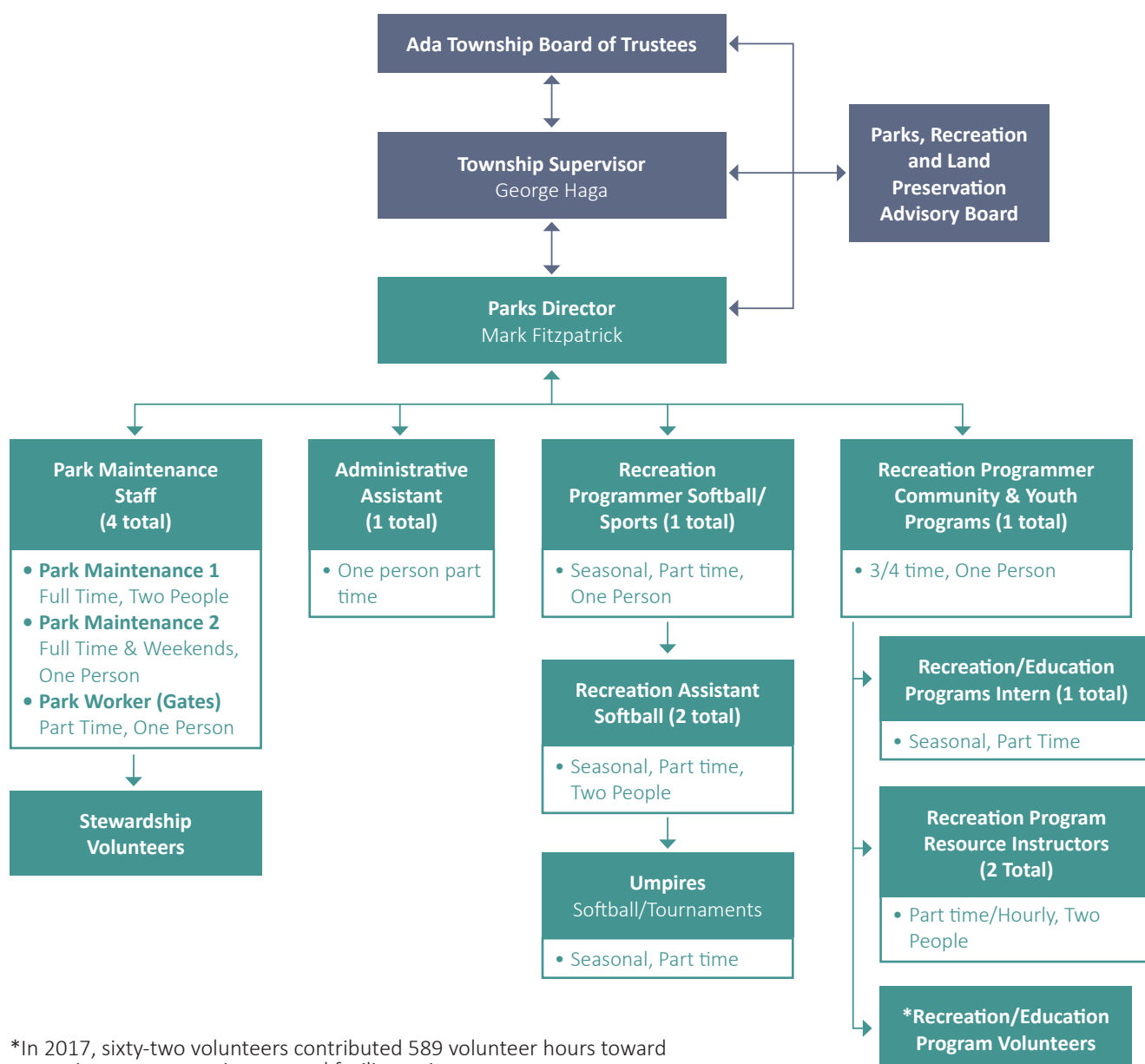


Example: Online Program Evaluation Form

RECOMMENDATION: PARKS AND RECREATION AGENCY STAFFING & STRUCTURE

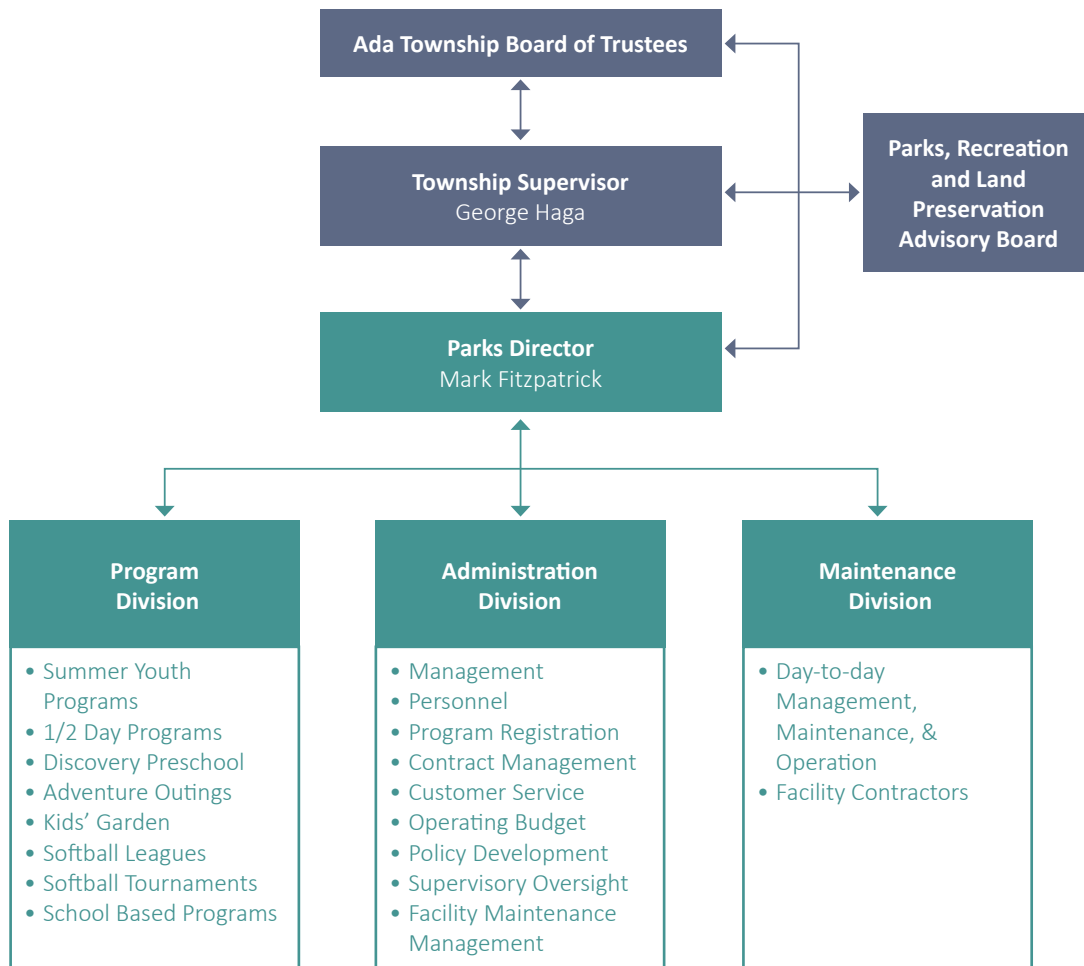
According to the 2018 NRPA Agency Performance Review, with 8.5 Full Time Equivalent Employees (FTEs), Ada Township's Parks and Recreation Department falls just below the median of agencies serving communities of less than 20,000 population. The median number of FTEs for a community of 20,000 or less is 9.8 FTEs, the lower quartile is 4.8 FTEs and the upper quartile is 18.1 FTEs. A strategic plan for the Parks and Recreation Department should be conducted to clearly outline the focus and goals of the department as well as the overall structure and required number of FTEs to meet those goals. The charts below show the current Parks and Recreation organizational structure and on the following page, a potential new structure. There are a variety of organization structures, the development of a strategic plan will assist in determining the appropriate structure for Ada Township Parks and Recreation Department.

Current Ada Township Parks, Recreation and Land Preservation Program Organizational Chart



*In 2017, sixty-two volunteers contributed 589 volunteer hours toward recreation program assistance and facility maintenance.

Potential Ada Township Parks, Recreation and Land Preservation Program Organizational Chart



07 SUMMARY OF KEY FINDINGS

One of Ada Township's major strengths is the diversity of natural features and recreation opportunities it offers its residents. The Township is characterized by wooded, rolling hills, expansive meadows, farmland, streams, wetlands and the convergence of the Grand and Thornapple rivers. Over 1,000 acres of public land and parks within Ada Township provide residents an extensive variety of recreation facilities. Proper planning and utilization of resources is critical in meeting the current and future recreation facility and program demands of the Township's residents.

This Recreation Needs Assessment established a baseline of current conditions within the Township and recreation trends (regionally and nationally). The establishment of current conditions includes an update to the Township's recreation facility inventory. This includes the addition of Settlers Grove Riverside Park (to be completed Spring 2019) and the expansion of Kent County's Chief Hazy Cloud Park. Settlers Grove Riverside Park provides a new recreation opportunity within the Village. It is a component of *2013 Envision Ada* and includes a playground, restrooms, the Ada Village General Store (privately operated), paved paths, benches and trees, and a deck/stage. Chief Hazy Cloud Park will expand to nearly 400 acres with the acquisition of 125 acres adjacent to the existing park and across the Grand River from Roselle Park. Planned improvements for the expanded park include a pedestrian bridge over the Grand River between Roselle and Chief Hazy Cloud parks, increased river access, multi-purpose trail, boardwalk, and equestrian and nature trails. These improvements will provide additional recreation opportunities and facilitate the connection of existing trails and parks and open space within the Township.

Community engagement for this Assessment found that among residents there is a high value for water access and development of water trails; high value for land-based trails, including bike paths, and a desire to expand and improve the trail system; a strong desire for water access in the form of a splash pad or pool; a desire for programs for all age groups and blended age groups; high value for organized fitness programs and opportunities; a desire for more green space (both large and small); and a variety of recommendations (primarily public use) for the best use of the Headley Street Property.

Based on current conditions and trends and community engagement, recommendations in this assessment include:

1. Establishing a framework for an interconnected network of bike lanes, bike paths, pathways, hiking trails, water trails, and equestrian trails linking recreation facilities and trails systems within the Township and regionally;
2. Exploring locations for increased water access;
3. Adding amenities such as a dog park, splash pad, disc golf course, and community garden to existing parks;
4. Conducting a specific study with community engagement for the Headley Street property to assist in developing a plan best suited for the community;
5. Implementing parks and recreation software for online registration and payment, and for assistance with reporting and statistical data to be used to increase efficiency and productivity and inform recreation planning;
6. Providing an Online Program or Facility Evaluation Form to seek more frequent feedback from facility and program users; and
7. Conducting a strategic plan for the Parks and Recreation Department to clearly outline the focus and goals of the department.

These recommendations provide the Township with a guide for potential future recreation amenities in Township parks and a guide for planning future recreation programs and support services.



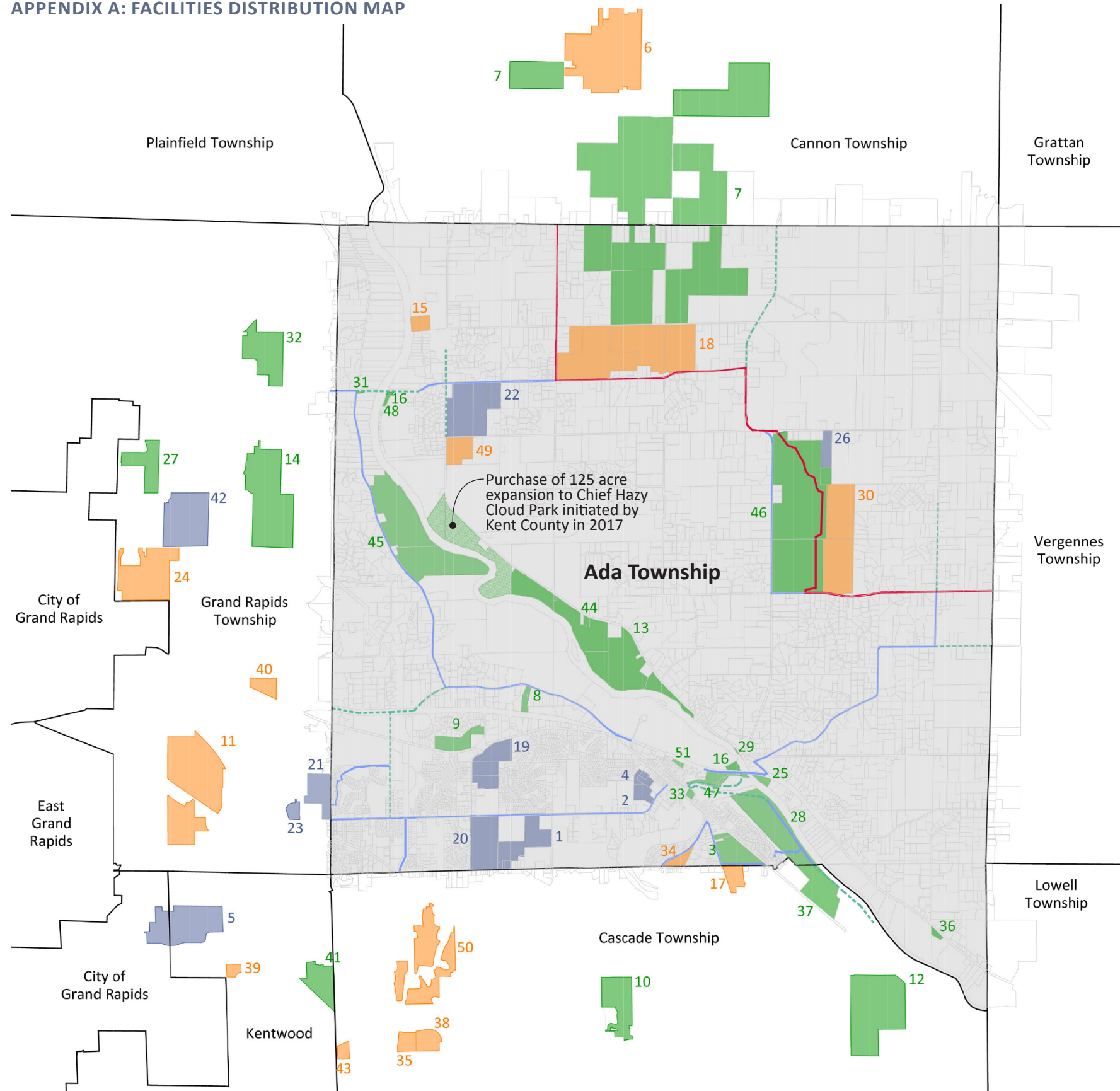
TOWNSHIP

**RECREATION FACILITIES AND
PROGRAMS NEEDS ASSESSMENT**

APPENDIX

NOVEMBER 2018

APPENDIX A: FACILITIES DISTRIBUTION MAP



- Public Parks and Open Space
- Schools
- Private Recreation
- Local Trails
- - - - - Future Trails
- North Country Trail and Iron Belle Trail

1. Ada Christian School *
 2. Ada Elementary School *
 3. Ada Township Park *
 4. Ada Vista Elementary *
 5. Calvin College Ecosystem Preserve
 6. Cannonsburg Ski Area
 7. Cannonsburg State Game Area *
 8. Carl Creek Crossing *
 9. Carl Creek Preserve *
 10. Cascade Burton Park
 11. Cascade Hills Country Club
 12. Cascade Peace Park
 13. Chief Hazy Cloud Park *
 14. Crahen Valley Park
 15. Creston Rod & Gun Club *
 16. DNR State Boat Launch (2 Locations) *
 17. Double C Ranch/Curtis Performance Horses
 18. Egypt Valley Country Club *
 19. Forest Hills Central Woodlands 5/6 School *
 20. Forest Hills Central Middle and High School*
 21. Forest Hills Community & Aquatic Center
 22. Forest Hills Eastern High School *
 23. Forest Hills Park Association
 24. Frederik Meijer Gardens
 25. Grand River Fulton Street Preserve *
 26. Goodwillie Environmental School *
 27. Grand Rapids Township Park
 28. Grand River Nature Area and Preserve *
 29. Grand River View Preserve *
 30. Kent County Conservation League *
 31. Knapp Corner Preserve *
 32. Knapp Forest Preserve
 33. Leonard Field Park *
 34. Lions Field (Thornapple Park) *
 35. Mary Free Bed YMCA
 36. MDOT Roadside Park *
 37. Michael McGraw Park
 38. MSA Fieldhouse
 39. MVP Sportplex
 40. MVP Athletic Club
 41. Northeast Park
 42. Northern High School
 43. Patterson Ice Center
 44. Pettis Avenue Reith Riley Parcel *
 45. Roselle Park *
 46. Seidman Park *
 47. Settler's Grove Park *
 48. Shady Drive Lot*
 49. Thomet Stables *
 50. Watermark Country Club
 51. Headley Street Property - Potential Future Public Green Space *
- * Denotes Properties Located in Ada Township

APPENDIX B: ADA TOWNSHIP RECREATION PROPERTIES INVENTORY

The following is an up-to-date inventory of recreation facilities within Ada Township. The facilities are color coded to denote ownership: **Township (black)**, **County (cyan)**, **State (green)**, **Federal (yellow)**, **School (light blue)**, and **Private (red)**. Within the Township there are eleven (11) Township-owned, two (2) County-owned, three (3) State-owned, one (1) Federally-owned, six (6) school-owned, and five (5) privately-owned recreation properties/facilities. In total, there are twenty-eight (28) recreation properties within Ada Township.

ADA TOWNSHIP RECREATION FACILITIES	
Source: Ada Township 2017 Parks, Recreation and Land Preservation Plan, Township Parks & Recreation Department website and seasonal flier, communication directly with the Township Parks & Recreation Department, and Kent County Parcel and GIS mapping.	
Ada Township Park, 57 acres	
Amenities	Programs
<ul style="list-style-type: none"> • Park office building • Storage and maintenance building • Playground • 38 picnic tables • 4 connected gazebos • 2 open field areas • 6 picnic areas • 4 tennis courts • 6 pickle ball courts • 2 softball/baseball diamonds with bleachers • Half-court basketball court • Sand volleyball court • Soccer field • Shelter • Gazebo • Barrier-free restrooms • Grills • Paved paths • Nature trail • Bud Locke Arboretum 	<ul style="list-style-type: none"> • Summer Day Camp • Softball Leagues • School Programs <p>Third Party</p> <ul style="list-style-type: none"> • Forest Hills Girl Scout Day Camp • Grand Rapids Triathlon • August in Ada Children’s Festival (Ada Business Association) • AYSO Soccer
Leonard Field Park, 3 acres	
Amenities	Programs
<ul style="list-style-type: none"> • Softball field • Bike paths • Barrier-free river overlook • River observation deck • Barrier-free restroom • River access 	<ul style="list-style-type: none"> • Softball Leagues • 5k and other Runs • Host site for Annual Bridge Ride • Christmas Bridge Lighting <p>Third Party</p> <ul style="list-style-type: none"> • Beers at the Bridge (Ada Historical Society) • Grand Rapids Triathlon

Roselle Park, 250 acres	
Amenities	Programs
<ul style="list-style-type: none"> • Paved trail system • Non-paved trail system • Observation decks • Canoe landing • Resource Building (restrooms, meeting room) • Parking • Playground • Climbing wall • Picnic tables • Silo observation deck • Cross-country skiing 	<ul style="list-style-type: none"> • Summer Day Camp • Roselle Park River Festival • Grand River-Run • School Programs • Family/Adult Programs <p>Third Party</p> <ul style="list-style-type: none"> • Professional Development Programs
Settlers Grove Riverside Park (under construction), 19 acres	
Amenities	Programs
<ul style="list-style-type: none"> • Restrooms • Walkway • Picnic area • Playground • Stage • Future non-motorized trail connection from riverfront park to the existing non-motorized trail on the M-21 bridge 	<ul style="list-style-type: none"> • Programs to being in 2019
Carl Creek Crossing Preserve, 8 acres	
Amenities	Programs
<ul style="list-style-type: none"> • Gravel walking paths • Boardwalks • Sitting areas 	<ul style="list-style-type: none"> • Day Camps
Carl Creek Wetlands Preserve (unimproved), 34 acres	
Amenities	Programs
<ul style="list-style-type: none"> • Future: non-paved trail system, boardwalk 	
Grand River - Fulton Street Preserve (unimproved), 5 acres	
Amenities	Programs
<ul style="list-style-type: none"> • NA 	<ul style="list-style-type: none"> • NA in flood plain
Grand River Nature Area and Preserve (unimproved), 120 acres	
Amenities	Programs
<ul style="list-style-type: none"> • Paved trail • Natural trail 	<ul style="list-style-type: none"> • NA in flood plain
Grand River View Preserve (unimproved), 0.5 acres	
Amenities	Programs
<ul style="list-style-type: none"> • No future improvements planned 	<ul style="list-style-type: none"> • NA in flood plain

Knapp Corner Preserve, 1 acre	
Amenities	Programs
<ul style="list-style-type: none"> • “Welcome to Ada Township” sign • Bench • Native plant landscaping • Bike Path 	<ul style="list-style-type: none"> • NA
Pettis Avenue Parcel (unimproved), 3 acres	
<ul style="list-style-type: none"> • Potential future merge with Chief Hazy Cloud Park 	<ul style="list-style-type: none"> • NA
Shady Drive Preserve (unimproved), 0.15 acres	
<ul style="list-style-type: none"> • NA 	<ul style="list-style-type: none"> • NA
Ada Township Bike Trails, approximately 19 miles existing (7.5 miles planned future)	
Amenities	Programs
<ul style="list-style-type: none"> • Bike Path 	<ul style="list-style-type: none"> • NA
Seidman Park, 530 acres (Kent County)	
Amenities	Programs
<ul style="list-style-type: none"> • Trail network • Cross-country skiing • Paved non-motorized trail network • Picnic shelters • Primitive/portable restroom facilities • Boardwalk 	
Chief Hazy Cloud Park, 261 acres (Kent County)	
Amenities	Programs
<ul style="list-style-type: none"> • Parking • River access • Canoe/kayak launch • Picnic area • Future: trails 	
Cannonsburg State Game Area, 1,300 acres (State)	
Amenities	Programs
<ul style="list-style-type: none"> • Hunting • Hiking • Mountain biking • Boardwalk • Parking 	
Michigan DNR Grand River Public Access Site at Knapp Ave, 1 acre (State)	
Amenities	Programs
<ul style="list-style-type: none"> • Boat launch ramp • Gravel parking area • Pit-type restrooms 	<ul style="list-style-type: none"> • Youth canoe trip

Michigan DNR Grand River Public Access Site at Fulton Ave, 4.7 acre (State)	
Amenities	Programs
<ul style="list-style-type: none"> Boat launch ramp Gravel parking area Pit-type restrooms 	<ul style="list-style-type: none"> Youth canoe trip
MDOT Ada Roadside Park, 3.5 acres (State)	
Amenities	Programs
<ul style="list-style-type: none"> Picnic tables Grills Restroom facilities 	
Iron Belle/North Country Trail 7.5 miles (State & Federal)	
Amenities	Programs
<ul style="list-style-type: none"> Hiking route 	
Ada Elementary School, 15 acres	
Amenities	Programs
<ul style="list-style-type: none"> Play area Ball field (2) Youth soccer (2), one overlay (i.e. soccer field using softball outfield) Multi-Use Hard-court (basketball) Gymnasium Playground Tot lot 	Third Party <ul style="list-style-type: none"> Little League AYSO youth soccer Youth football league
Ada Vista Elementary	
Amenities	Programs
<ul style="list-style-type: none"> Playground Basketball court Multi-Use Hard-courts (2, basketball) Youth soccer (2), one overlay Softball Gymnasium (not available to public) Track (not available to public) 2 ball fields (not available to public) 	Third Party <ul style="list-style-type: none"> AYSO youth soccer
Ada Christian School	
Amenities	Programs
<ul style="list-style-type: none"> Playground Softball field (adult) Softball field (youth) Hard-surface play area 4 youth soccer fields Adult soccer field 	

Forest Hills Central Middle and High Schools, 53 acres	
Amenities	Programs
<ul style="list-style-type: none"> • 2 Gymnasiums • Tennis courts (8) • Baseball diamond • Softball (adult) • Softball (youth) • 2 Soccer fields (adult), one synthetic • Football field, synthetic, multi-use • Track • Open play-field • Auditorium (not available to public) 	<ul style="list-style-type: none"> • Community education
Forest Hills Central Woodlands School	
Amenities	Programs
<ul style="list-style-type: none"> • Playground • Softball Field (youth) • Soccer field (adult) • Multi-Use Hard-court (Basketball) • Volleyball • Trail 	
Forest Hills Eastern Middle and High Schools, 115 acres	
Amenities	Programs
<ul style="list-style-type: none"> • Gymnasiums (2) • Tennis courts (8) • Soccer field • Baseball diamond • Softball diamond • Overlay Field (soccer, softball) • Football field (synthetic, multi-purpose) • Multi-purpose rectangular field (2) • Track and field facilities • Open play-fields • Performance theater • Auditorium. • Community garden 	
Ada Dance Academy (PRIVATE)	
Amenities	Programs
<ul style="list-style-type: none"> • Dance studios (4) 	<ul style="list-style-type: none"> • Dance lessons • Professional dance instruction
Creston Rod and Gun Club (PRIVATE)	
Amenities	Programs
<ul style="list-style-type: none"> • Skeet • Trap • Shooting range 	<ul style="list-style-type: none"> • Winter and Summer League

Egypt Valley Country Club (PRIVATE)	
Amenities	Programs
<ul style="list-style-type: none"> • 27-hole golf course • Tennis courts (4) • Outdoor swimming pool • Clubhouse 	
Kent County Conservation League (PRIVATE)	
Amenities	Programs
<ul style="list-style-type: none"> • Clubhouse • Trap range • Skeet range • Sporting clays range • Rifle range • Pistol range • Archery range 	<ul style="list-style-type: none"> • Skeet, 5-stand, Trap, and Sporting Clays School-age kids shooting program • Group or private lessons • Corporate outings • Membership shooting
Lions Field (Thornapple Valley Community Park) (PRIVATE)	
Amenities	Programs
<ul style="list-style-type: none"> • 5 Baseball diamonds (3 youth) • 12 Picnic tables • 2 Playgrounds • Batting cage • Restrooms • Concessions • Picnic Shelter • Grill 	<ul style="list-style-type: none"> • Thornapple Valley Baseball League
Thomet Stables (PRIVATE)	
Amenities	Programs
<ul style="list-style-type: none"> • Box stalls • Indoor riding arena • 60' round pen • 125' x 225' lighted outdoor jump arena • Outdoor dressage arena • Riding fields with cross country jumps • Over 100 acres trail riding 	<ul style="list-style-type: none"> • Riding instruction • Horse shows

APPENDIX C: RECREATION FACILITIES MATRIX (FACILITIES OWNED BY ADA TOWNSHIP ONLY)

The facilities are color coded to denote ownership: **Township (black)**, **County (cyan)**, **State (green)**, **Federal (yellow)**, **School (light blue)**, and **Private (red)**. Facilities provided by other entities are outlined on the following page.

	% of Agencies Offering Facility	Leonard Field Park	Ada Township Park	Roselle Park	Settlers Grove Riverside Park	Grand River Nature Area & Preserve	Carl Creek Crossings Preserve	Carl Creek Wetlands Preserve	Knapp Corner Preserve	Thornapple Confluence Preserve	Grand River-Fulton Street Preserve	Pettis Avenue Parcel	Ada Township Total Facilities	Ada Township Residents per Facility 2010	Ada Township Residents per Facility 2017 Estimate
Playgrounds	92		1	1	1								3	4,381	4,843
Basketball Courts	83		1										1	13,142	14,528
Tennis Courts (outdoor only)	77		4										4	3,286	3,632
Diamond fields: baseball- youth	75	1	2										3	4,381	4,843
Diamond fields: softball- adult	66	1	2										3	4,381	4,843
Rectangular fields: multi-purpose	63		2										2	6,571	7,264
Diamond fields: softball- youth	59	1	2										3	4,381	4,843
Diamond fields: baseball- adult	55	1	2										3	4,381	4,843
Dog Park	55												0	0	0
Swimming Pools (outdoor only)	52												0	0	0
Totlots	47												0	0	0
Rectangular fields: soccer field- youth	47		1										1	13,142	14,528
Community Garden	46												0	0	0
Rectangular fields: soccer field - adult	42		1										1	13,142	14,528
Multiuse courts- basketball, volleyball	38		1										1	13,142	14,528
Diamond fields: tee-ball	38	1	2										3	4,381	4,843
Rectangular fields: football field	38												0	0	0
Ice ring (outdoor only)	16												0	0	0
Multipurpose synthetic field	15												0	0	0
Skate park	14												0	0	0
Rectangular fields: lacrosse field	11												0	0	0
Rectangular fields: cricket field	9												0	0	0
Overlay field	6												0	0	0
Rectangular fields: field hockey field	4												0	0	0

APPENDIX C: RECREATION FACILITIES MATRIX (INCLUDING FACILITIES PROVIDED BY OTHER ENTITIES)

The facilities are color coded to denote ownership: Township (black), County (cyan), State (green), Federal (yellow), School (light blue), and Private (red).

	Seidman Park (Kent County)	Chief Hazy Cloud (Kent County)	Cannonsburg State Game Area (State)	MIDNR Grand River Public Access Sites (State)	Iron Belle Trail (State)	North County Trail (Nation)	Ada Elementary School	Ada Vista Elementary	Ada Christian	Forest Hills Central Middle and High Schools	Forst Hills Cnetral Woodlands School	Forest Hills Eastern Middle and High Schools	Ada Dance Academy	Creston Rod and Gun Club	Double C Ranch/Curtis Performance Horses (PRIVATE)	Egypt Valley Country Club	Kent County Conservation League	Lions Field (Thornapple Valley Community Park)	Thomet Stables	Other Entity Total Facilities	Ada Township All Total Facilities	Ada Township Residents per Facility 2010 US Census Estimate	Ada Township Residents per Facility 2017 US Census Estimate	NIRPA Agencies Less than 500 People per Square Mile
Playgrounds							1	1	1	1	1							2		7	10	1,314	1,453	6,132
Basketball Courts								1		1										2	3	4,381	4,843	7,869
Tennis Courts (outdoor only)							1			8		8				4				21	25	526	581	5,462
Diamond fields: baseball- youth							2											3		5	8	1,643	1,816	6,628
Diamond fields: softball- adult								1	1	1		1								4	7	1,877	2,075	10,957
Rectangular fields: multi-purpose									1			2								3	5	2,628	2,906	9,043
Diamond fields: softball- youth									1	1	1	1								4	7	1,877	2,075	10,495
Diamond fields: baseball- adult										1		1						2		4	7	1,877	2,075	15,000
Dog Park																				0	0	0	0	51,804
Swimming Pools (outdoor only)																1				1	1	13,142	14,528	42,344
Totlots							1													1	1	13,142	14,528	19,766
Rectangular fields: soccer field- youth							2	2	4											8	9	1,460	1,614	5,584
Community Garden																				0	0	0	0	37,571
Rectangular fields: soccer field - adult									1	2	1	2								6	7	1,877	2,075	10,250
Multiuse courts- basketball, volleyball							1	2	1	1	1									6	7	1,877	2,075	12,757
Diamond fields: tee-ball																				0	3	4,381	4,843	11,270
Rectangular fields: football field										1		1								2	2	6,571	7,264	21,750
Ice ring (outdoor only)																				0	0	0	0	11,168
Multipurpose synthetic field										1		1								2	2	6,571	7,264	35,238
Skate park																				0	0	0	0	27,375
Rectangular fields: lacrosse field																				0	0	0	0	12,522
Rectangular fields: cricket field																				0	0	0	0	199,889
Overlay field									1			1								2	2	6,571	7,264	10,820
Rectangular fields: field hockey field																				0	0	0	0	20,893

APPENDIX D: NEIGHBORING COMMUNITY RECREATION FACILITY AND PROGRAM INVENTORY

The matrices below outline properties and programs offered by neighboring communities. These include: Grand Rapids Charter Township, East Grand Rapids, Kentwood, Cascade Township, Lowell Charter Township, Vergennes Township, and Cannon Township. The facilities are color coded to denote ownership: **Township (black)**, **County (cyan)**, **State (green)**, **Federal (yellow)**, **School (light blue)**, and **Private (red)**. Additionally, it is noted with an asterisk if the facility falls within a five-mile radius of influence from Ada Township.

GRAND RAPIDS CHARTER TOWNSHIP RECREATION FACILITIES

Source: Grand Rapids Charter Township Park and Recreation Five-Year Plan 2018-2022 DRAFT

***Grand Rapids Township Park, 57acres**

Amenities	Programs
<ul style="list-style-type: none"> • 3 Ball Diamonds • 4 Tennis Courts • Soccer Field • Playground • Nature Trails • Picnic Tables • Shelter • Restrooms 	<ul style="list-style-type: none"> • AYSO youth soccer

***Crahen Valley Park, 200 acres**

Amenities	Programs
<ul style="list-style-type: none"> • Walking/Bike Path • Open Field • Parking • Overlook 	

***Knapp Valley Forest County Park, 93 acres (Kent County)**

Amenities	Programs

***Forest Hills Northern Middle and High School, 140 acres**

Amenities	Programs

***Forest Hills Community and Aquatic Center**

Amenities	Programs
<ul style="list-style-type: none"> • 8 lane, 25 yard standard "short course" instructional and competitive pool • 22' by 45' diving "L" providing 2 one meter diving boards and a 3 meter board for competition. This diving "L" also provides a 6 lane, 25 meter competitive course. • 1,200 square foot community meeting room and building administrative offices 	<ul style="list-style-type: none"> • Preschool Aquatic Classes • American Red Cross Learn-to Swim Program • Adult Aquatic Exercise Classes

***Forest Hills Parks Association**

Amenities	Programs
<ul style="list-style-type: none"> • Clubhouse • Outdoor Swimming Pool • 4 Tennis Courts • Playground • Baseball field 	<ul style="list-style-type: none"> • Swim Lessons • Tennis Lessons • Swim Team • Clubhouse Rental

***MVP Athletic Club**

Amenities	Programs
<ul style="list-style-type: none"> • Tennis Courts • Basketball Court • Volleyball • Playground • Outdoor Pool • Splash Pad 	<ul style="list-style-type: none"> • Fitness • Training

GRAND RAPIDS CHARTER TOWNSHIP RECREATION FACILITIES (CONTINUED)	
*Frederik Meijer Gardens, 158 acres	
Amenities	Programs
<ul style="list-style-type: none"> • Sculpture Garden • Exhibition Galleries • Conservatory • Botanical Gardens • Japanese Garden • Arid Garden • Greenhouse • Victorian Garden Parlor • Amphitheater 	<ul style="list-style-type: none"> • Adult Classes • Children Classes • Children Summer Camps • Master Lecture Series
*Cascade Hills Country Club, 241 acres	
Amenities	Programs
<ul style="list-style-type: none"> • 27-Hole Golf Course • 4 Tennis Courts • Aquatics • Fitness • Spa 	<ul style="list-style-type: none"> • Youth Tennis Clinics • Private Tennis Lessons • Swim Team • Dive Team • Swimming Lessons
GRAND RAPIDS CHARTER TOWNSHIP RECREATION PROGRAMS	
Source: Grand Rapids Charter Township Park and Recreation Five-Year Plan 2018-2022 DRAFT	
Township	Third Party
None	<ul style="list-style-type: none"> • Aerobics • Jazzercise • Tumbling • Basketball • Indoor Soccer • Baseball • Slimnastics • Gymnastics • Yoga • Volleyball • Open Gym • Golf • Arthritis Exercise • Water Exercise • Spring Board • Diving • Swim Classes • Scuba • Life Saving • CPR <p>*Programs are provided by Forest Hills School District through community education programs.</p>

EAST GRAND RAPIDS RECREATION FACILITIES	
Source: East Grand Rapids Parks and Recreation Website	
Reeds Lake Trail	
Amenities	Programs
<ul style="list-style-type: none"> • 4.2 Mile Walking/Biking Path 	
John Collins Park	
Amenities	Programs
<ul style="list-style-type: none"> • Boat Launch • Lakeshore Pathway, Overlooks and Benches • Rain Gardens • Picnic Areas • Event Space/Plaza • Restrooms 	
Manhattan Park	
Amenities	Programs
<ul style="list-style-type: none"> • Shelter • Picnic Area • Playground • Volleyball Courts • Softball Diamonds • Soccer Field • Tennis Courts • Nature Trails • Sledding Hill 	
Waterfront Park	
Amenities	Programs
<ul style="list-style-type: none"> • Accessible Walking Trails/Boardwalks • Fishing Piers 	
Hodenpyl Woods	
Amenities	Programs
<ul style="list-style-type: none"> • Plant Identification Trail • Walking Trails/Boardwalks 	
Remington Park	
Amenities	Programs
<ul style="list-style-type: none"> • Baseball Field • Restroom • Nature Trails 	
Griffiths Park	
Amenities	Programs
<ul style="list-style-type: none"> • Walking Trail with Benches 	
Wealthy Pool	
Amenities	Programs
<ul style="list-style-type: none"> • Indoor Pool 	

EAST GRAND RAPIDS RECREATION PROGRAMS

Source: East Grand Rapids Parks and Recreation Website

City	Third Party
<p> Youth Programs <ul style="list-style-type: none"> • Art Classes • Music Classes • Babysitting • Fencing • Yoga • Youth Dance • Swim Classes • Sports Camps • Art Camps <p> Adult Programs <ul style="list-style-type: none"> • Art Classes • Dance Classes • AARP Driving Safety • Bridge Classes • Dog Obedience • Aquatic Fitness Classes • Fitness Classes </p> </p>	<ul style="list-style-type: none"> • Coed Cross Country • Girls Volleyball • Boys Basketball • Boys Recreational Inter-squad League • Youth Football League • Field Hockey Camp • Pee Wee Soccer • Soccer Academy League • Coed Middle School League • Basketball Leagues • Youth Cheerleading • Bowling Club • Bricks 4 Kidz Educational Programs <p>*Programs are provided by school districts through community education programs.</p>

KENTWOOD RECREATION FACILITIES

Source: Kentwood Parks and Recreation Website

Bowen Station Park

Amenities	Programs
<ul style="list-style-type: none"> • Biking trails • Picnic Area • Playground • Restroom • Shelter 	

Burgis Park

Amenities	Programs
<ul style="list-style-type: none"> • Basketball • Picnic Area • Playground • Tennis Courts 	

East Paris Nature Park

Amenities	Programs
<ul style="list-style-type: none"> • Nature Trails • Picnic Area • Shelter • Restroom 	

East West Trail

Amenities	Programs
<ul style="list-style-type: none"> • 3.6 Miles of Trail 	

Home Acres Park

Amenities	Programs
<ul style="list-style-type: none"> • Skate Park • Gaga Ball • Playground • Bocce Ball • Baseball Field • Shelter • Picnic Area • Restroom 	

Jaycee Park

Amenities	Programs
<ul style="list-style-type: none"> • Disc Golf • Basketball • Tennis Court • Biking & Nature Trails • Picnic Area • Playgrounds 	R.E.A.C.H. Summer Program

Kellogg Woods Park

Amenities	Programs
<ul style="list-style-type: none"> • Dog Park • Baseball Fields • Soccer Fields • Shelter • Playgrounds • Restrooms 	

KENTWOOD RECREATION FACILITIES (CONTINUED)

***Northeast Park, 100 acres**

KENTWOOD RECREATION FACILITIES (CONTINUED)	
*Northeast Park, 100 acres	
Amenities	Programs
<ul style="list-style-type: none"> • Baseball & Soccer Fields • Basketball • Biking & Nature Trails • Playground • Shelter/Picnic Air 	
Old Farm Park	
Amenities	Programs
<ul style="list-style-type: none"> • Pickleball Courts • Disc Golf • Basketball • Picnic Areas and Grills • Playground 	
Paris Park	
Amenities	Programs
<ul style="list-style-type: none"> • Biking, Walking & Nature Trails 	
Paul Henry Trail	
Amenities	Programs
<ul style="list-style-type: none"> • 2.7 Miles of Trail 	
Pinewood Park	
Amenities	Programs
<ul style="list-style-type: none"> • Splash Pad • Skate Ramps • Baseball Field • Soccer Field • Basketball Courts • Tennis Courts • Playground • Gaga Ball • Shelter • Picnic Area • Restroom 	
Rondo Street Station Park	
Amenities	Programs
<ul style="list-style-type: none"> • Biking & Walking Trails • Playground 	
Stanaback Park	
Amenities	Programs
<ul style="list-style-type: none"> • Basketball Courts • Biking, Walking & Nature Trails • Picnic Area • Shelter • Playgrounds • Restroom 	

KENTWOOD RECREATION FACILITIES	
Source: Kentwood Parks and Recreation Website	
Bowen Station Park	
Amenities	Programs
<ul style="list-style-type: none"> • Biking trails • Picnic Area • Playground • Restroom • Shelter 	
Burgis Park	
Amenities	Programs
<ul style="list-style-type: none"> • Basketball • Picnic Area • Playground • Tennis Courts 	
East Paris Nature Park	
Amenities	Programs
<ul style="list-style-type: none"> • Nature Trails • Picnic Area • Shelter • Restroom 	
East West Trail	
Amenities	Programs
<ul style="list-style-type: none"> • 3.6 Miles of Trail 	
Home Acres Park	
Amenities	Programs
<ul style="list-style-type: none"> • Skate Park • Gaga Ball • Playground • Bocce Ball • Baseball Field • Shelter • Picnic Area • Restroom 	
Jaycee Park	
Amenities	Programs
<ul style="list-style-type: none"> • Disc Golf • Basketball • Tennis Court • Biking & Nature Trails • Picnic Area • Playgrounds 	R.E.A.C.H. Summer Program
Kellogg Woods Park	
Amenities	Programs
<ul style="list-style-type: none"> • Dog Park • Baseball Fields • Soccer Fields • Shelter • Playgrounds • Restrooms 	

KENTWOOD RECREATION FACILITIES (CONTINUED)

***Northeast Park, 100 acres**

Amenities	Programs
<ul style="list-style-type: none"> • Baseball & Soccer Fields • Basketball • Biking & Nature Trails • Playground • Shelter/Picnic Air 	
Old Farm Park	
Amenities	Programs
<ul style="list-style-type: none"> • Pickleball Courts • Disc Golf • Basketball • Picnic Areas and Grills • Playground 	
Paris Park	
Amenities	Programs
<ul style="list-style-type: none"> • Biking, Walking & Nature Trails 	
Paul Henry Trail	
Amenities	Programs
<ul style="list-style-type: none"> • 2.7 Miles of Trail 	
Pinewood Park	
Amenities	Programs
<ul style="list-style-type: none"> • Splash Pad • Skate Ramps • Baseball Field • Soccer Field • Basketball Courts • Tennis Courts • Playground • Gaga Ball • Shelter • Picnic Area • Restroom 	
Rondo Street Station Park	
Amenities	Programs
<ul style="list-style-type: none"> • Biking & Walking Trails • Playground 	
Stanaback Park	
Amenities	Programs
<ul style="list-style-type: none"> • Basketball Courts • Biking, Walking & Nature Trails • Picnic Area • Shelter • Playgrounds • Restroom 	

KENTWOOD RECREATION FACILITIES (CONTINUED)	
Stauffer Station Park	
Amenities	Programs
<ul style="list-style-type: none"> • Biking & Walking Trails • Picnic Area • Restroom 	
Summerwood Park	
Amenities	Programs
<ul style="list-style-type: none"> • Playground • Picnic Area 	
Veterans Memorial Park	
Amenities	Programs
<ul style="list-style-type: none"> • Basketball courts • Tennis Courts • Biking & Nature Trails • Splash Pad • Playground • Climbing Wall • Shelter • Sand Volleyball • Restroom 	
Wing Station	
Amenities	Programs
<ul style="list-style-type: none"> • Biking & Walking Trails 	
*Calvin College Ecosystem Preserve, 130 acres	
Amenities	Programs
<ul style="list-style-type: none"> • Native Gardens • Trails • Interpretive Center 	<ul style="list-style-type: none"> • Early Childhood • Summer Camp • Family • Discovery Field Packs • Elementary School Groups • College • Adult • Native Plant Sale
MVP Sportsplex	
Amenities	Programs
<ul style="list-style-type: none"> • 3 group exercise studios • 6 indoor tennis courts • Large fitness • 25-meter, 5-lane indoor pool • Outdoor aquatic center with water slides and 0-depth entry pool 	<ul style="list-style-type: none"> • Group Fitness • Fitness & Training • Aquatics • Tennis • Certification Courses

KENTWOOD RECREATION PROGRAMS

Source: Kentwood Parks and Recreation Website

Kentwood	Kentwood (Cont.)
<p>Adaptive Recreation Programs: <i>Adaptive recreation programs provide social, creative, educational opportunities for youth and adults with physical and developmental disabilities.</i></p> <ul style="list-style-type: none"> • Pickleball Clinic • Golf League • Whitecaps Night • Summer Bowling • Bocce Club • Water Ski/Lessons • Adapted Swim Summer • Leisure Club <p>Adult Recreation Programs:</p> <ul style="list-style-type: none"> • Walking Club • Adult Pickleball Lessons • Rock Climbing • Cardio Drumming • Pickelball Ladder Leagues • Softball Spring/Summer • 50 and Better Softball League • Dodgeball Tournament Fundraiser • Adult Women Soccer Leagues • Adult Co-Ed Soccer Leagues • Sand Volleyball League • Adult Softball Leagues <p>Senior Recreation Programs (membership option):</p> <ul style="list-style-type: none"> • Community Connections • Greeting Card Making • Spring Pizza Potluck • Grandma and Me Tea • Pinsplitters Bowling League • Men’s Chess and Checkers • Bridge Club • Knitting and Crochet • Euchre <p>Swim Programs</p> <ul style="list-style-type: none"> • Parent and Child Swim Lessons • Adult Swim Lessons • Preschool Aquatics & Learn to Swim 	<p>Youth Programs</p> <ul style="list-style-type: none"> • Pee Wee Basketball • Youth Soccer Clinic • T-Ball • Sports of All Sorts • Youth Soccer Programs • Introduction to Rugby • Flag Football • Youth Pickleball • Be a Babysitter • Karin’s Horse Connection • Taekwondo <p>Third Party</p> <ul style="list-style-type: none"> • SCOR Soccer • AYSO Soccer • Rocket Football/78ers • Rockford Little League • Rockford Hockey Association • Riptide Swimming Club • Wolverine Little League • Rockford Boys Lacrosse Club • Rockford Girls Lacrosse Club

CASCADE TOWNSHIP RECREATION FACILITIES

Source: Cascade Township Parks, Recreation, and Open Space Plan 2014-2019

Cascade Township Park, 55 acres

Amenities	Programs
<ul style="list-style-type: none"> • Playground • 4 Tennis • 2 Softball • Volleyball • 4 Horseshoes • 2 Soccer • Restrooms • Picnic Shelter (150-200 people) • Picnic Shelter (24 people, playground) • Picnic Gazebo (30 people) • Walking Trail (2 mile) • Frisbee Golf (18 hole) • Dog Park (separate large and small dog) • Natural Area 	

Leslie E. Tassell Park, 3.5 acres

Amenities	Programs
<ul style="list-style-type: none"> • Restrooms • Picnic Shelter (30-45 people) • Picnic Gazebo (10-12 people) • Riverfront Fishing • Canoe/Kayak Access • Splash pad • Community fire ring • Parking 	

Cascade Dam, 0.5 acres

Amenities	Programs
<ul style="list-style-type: none"> • Fishing • Canoe portage 	

Cascade Museum Garden, 0.4 acres

Amenities	Programs
<ul style="list-style-type: none"> • Garden setting 	

*Michael McGraw Park, 68.8 acres

Amenities	Programs
<ul style="list-style-type: none"> • River frontage • Walking trails 	

*Cascade Peace Park, 198 acres

Amenities	Programs
<ul style="list-style-type: none"> • Nature Trails (4 miles) • Port-A-John facility 	

*Cascade Burton Park, 79 acres

Amenities	Programs
<ul style="list-style-type: none"> • Nature Trails (2.5 miles) • Bathrooms • Handicap accessible parking 	

Township Pathways	
Amenities	Programs
<ul style="list-style-type: none"> • 17 Miles Constructed 	
CASCADE TOWNSHIP RECREATION FACILITIES (CONTINUED)	
*Double C Ranch/Curtis Performance Horses	
Amenities	Programs
<ul style="list-style-type: none"> • Main Barn with box stalls (20) and riding arena • Little Barn with box stalls (4) • Outdoor arena • Firepit • Playset with Swingset • Large grass pasture (5) 	<ul style="list-style-type: none"> • Adult riding instruction • Children riding instruction • Horse boarding
*Watermark Country Club	
Amenities	Programs
<ul style="list-style-type: none"> • 18-hole Golf Course • Clubhouse • Outdoor Swimming Pool • Playground 	<ul style="list-style-type: none"> • Tennis Lessons • Golf League
*Mary Free Bed YMCA	
<ul style="list-style-type: none"> • Chapel • KidZone and Activity Center • Multi-Purpose Classrooms • Carol Van Andel Healthy Living Center • Greenhouse • Teaching Kitchen • Administrative Suite • Community Meeting Room • 2 Multi-Purpose Gymnasiums • 1 Sports Court • 8-Lane Lap Pool • Family Fun Pool • Health & Fitness Center • 1/5 Mile Indoor Track • Group Fitness Studios • Indoor Cycling Studio • Climbing Wall • Men's and Women's Locker Rooms • Fully Accessible Family Locker Rooms • 2 Family Locker Rooms with Changing Mat • Men's and Women's Saunas • Learning Farm with Raised Bed Gardens • 1/2 Mile Loop Paved Trail • Soccer Fields • Baseball Fields • Wheelchair Softball Field • Accessible Playground • Outdoor Tennis Courts 	<ul style="list-style-type: none"> • Adult Specialty Programs • Wellness and Prevention Program • Swim Lessons • Sports Classes & Snow Sports • Seasonal Leagues • Music & Dance • Date Nights & parent's Morning Out • Active Programs • YMCA Camp Manitou-Lin Seasonal Activities

Patterson Ice Arena	
Amenities	Programs
<ul style="list-style-type: none"> • Two, Fully Refurbished NHL Sheets Of Ice • Locker Rooms • Meeting Rooms • Lounge Areas • Game Machines • Pro Shop • Concession Stand 	<ul style="list-style-type: none"> • Skating Classes • Private Lessons • League Hockey • Open Hockey • Hockey Camps • Hockey Teams
*Shaggy Pines Dog Park, 20 acres	
Amenities	Programs
<ul style="list-style-type: none"> • 15 acres fenced grounds • One-mile jogging/hiking trail • Lighted and plowed trails for evening and winter use • Two large 'dry' dog areas • Benches and tables • Large dedicated sand pile for climbing and digging • Dog swimming pond • 'Sunset Deck' with music and lounge chairs • Water stations • Dedicated, enclosed small dog area specifically for dogs under 30 pounds • Special events area for agility training, obedience classes and community events and birthday parties • Self-serve dog wash tubs and drying areas • Doggy store • Coffee bar and lounge area 	<ul style="list-style-type: none"> • Membership Facility • Dog Washes • Obedience and Agility Training • Sponsored Events and Parties

CASCADE TOWNSHIP RECREATION PROGRAMS	
Source: Cascade Township Parks, Recreation, and Open Space Plan 2014-2019	
Township	Third Party
None	<ul style="list-style-type: none"> • American Youth Soccer Organization (AYSO), Ada-Cascade AYSO • YMCA <ul style="list-style-type: none"> ○ swim team ○ swimming lessons ○ fitness and wellness ○ youth sports programs in floor hockey, soccer, t-ball, baseball, flag football, basketball, tennis, soccer and gymnastics

LOWELL CHARTER TOWNSHIP RECREATION FACILITIES	
Source: Lowell Charter Township Website	
Grand River Riverfront Park, 80 acres	
Amenities	Programs
<ul style="list-style-type: none"> • Canoe/kayak Launch • 2 Softball Fields • Lacrosse Field • 8 Soccer Fields • Playground • Nature/walking Path • Scenic Overlook • Fishing Pier • Picnic Shelter with Restrooms • Picnic Shelter, Small 	
North Country Trail (Federal)	
Amenities	Programs
<ul style="list-style-type: none"> • Hiking route 	
Bradford Dickinson White Nature Preserve, 45 acres	
Amenities	Programs
<ul style="list-style-type: none"> • Trails 	

LOWELL TOWNSHIP RECREATION PROGRAMS	
Source: Lowell Charter Township Website	
Township	Third Party
None	None

VERGENNES TOWNSHIP RECREATION FACILITIES	
Source: Vergennes Township Master Plan, Updated April 9, 2018 & Internet Research	
Wege Foundation Natural Area, 80 acres	
Amenities	Programs
<ul style="list-style-type: none"> • Wittenbach Agri Science Center • Hiking Trails • Cross Country Skiing • Parking 	
Lowell High School, 98 acres	
Amenities	Programs
<ul style="list-style-type: none"> • 8 Tennis Courts • 2 Soccer Fields • Baseball Diamond • Softball Diamond • Lowell Area Trailway • Football Field • Track & Field 	
Fallasburg Park	
Amenities	Programs
<ul style="list-style-type: none"> • Seven (7) group picnic areas • One open shelter • Historic enclosed shelter house with restrooms • Two (2) baseball diamonds • North Country Trail • Trail network • Covered bridge • Three (3) playgrounds • 18-hole disc golf course • Horseshoe pits 	
North Country Trail (Federal)	
Amenities	Programs
<ul style="list-style-type: none"> • Hiking route 	

VERGENNES TOWNSHIP RECREATION PROGRAMS	
Source: Vergennes Township Master Plan, Updated April 9, 2018 & Internet Research	
Township	Third Party
None	None

CANNON TOWNSHIP RECREATION FACILITIES	
Source: Cannon Township Recreation Plan 2016-2021	
Township Center Park, 40.34 acres	
Amenities	Programs
<ul style="list-style-type: none"> • Tot Playground • Picnic Shelter • Parking • Paved Nature Trail • Open Play Area • Mountain Bike Trail 	
Bostwick Lake Park, 0.1 acres	
Amenities	Programs
<ul style="list-style-type: none"> • Swimming Area • Picnic Tables • Benches • Porta Jon • Parking 	
Silver Lake Access, 0.04 acres	
Amenities	Programs
<ul style="list-style-type: none"> • Non-motorized Boat Launch • Parking 	
Non-Motorized Trails	
Amenities	Programs
<ul style="list-style-type: none"> • 5.25 miles of trails 	
Townsend Park, 140 acres (Kent County)	
Amenities	Programs
<ul style="list-style-type: none"> • 2 Playgrounds • 2 Ballfields • 2 Restrooms • Enclosed Picnic Shelter • Picnic Shelter • Picnic Areas • Grills • Natural Trails • Cross-country Skiing 	
*Cannonsburg Ski Area, 270 acres	
Amenities	Programs
<ul style="list-style-type: none"> • Downhill skiing • Tubing • Convention Amenities • Softball Fields • Mountain Biking • Zipline 	<ul style="list-style-type: none"> • Grand Rapids Symphony summer concerts • Sanctioned Mountain Bike Races

CANNON TOWNSHIP RECREATION FACILITIES (CONTINUED)

Camp Roger, 285 acres

Amenities	Programs
<ul style="list-style-type: none"> • Event Facility • Lodge • Cabins • Beach • Dock • Chapel Grove • Hiking Trails • Gazebo • Picnic tables • Activity/Game Sandpit • Volleyball Court • Amphitheatre • Fire Ring • Treehouse • Central Area Gathering Space 	<ul style="list-style-type: none"> • Summer Camp • Outdoor Education • Retreats & Rentals

CANNON TOWNSHIP RECREATION PROGRAMS

Source: Cannon Township Recreation Plan 2016-2021

Township	Third Party
<p>None (no recreation department)</p>	<ul style="list-style-type: none"> • SCOR Soccer • AYSO Soccer • Rocket Football/78ers • Rockford Little League • Rockford Hockey Association • Riptide Swimming Club • Wolverine Little League • Rockford Boys Lacrosse Club • Rockford Girls Lacrosse Club



**ADA TOWNSHIP RECREATION NEEDS ASSESSMENT
EXECUTIVE SUMMARY OF STAKEHOLDER ENGAGEMENT
Prepared by MainStreet Planning Company
September 13, 2018**

The Ada Township Recreation Needs Assessment included three primary forms of stakeholder engagement. These were: an online tool called Community Remarks©; a Leadership Workshop Café; and a self-guided input method called Workshop in a Box.

Community Remarks© On-line Tool

Community Remarks© was launched on July 3, 2018, and was active through July 22, 2018. The tool interfaced with Google Maps, and participants were able to place comments within six topics on specific locations, and were able to leave general comments as well. Topics included:

- Existing Parks and Facilities
- Parks, Playgrounds, and Recreation Facilities-new locations and ideas
- Trails-new locations and connections
- Proposed Green space-large and small locations
- Headley Street Property
- Recreational Facilities Used Outside of Ada Township

A total of **350** comments were posted on the site; this number represents the original comments as well as the “likes” and “dislikes” that were posted on any individual comment. No comments were posted for the topic “Recreational Facilities Used Outside of Ada Township.”

Included in the results of Community Remarks© is a document named *Community Remarks© Complete List of Comments*. The purpose of this document is to include an interactive web-based ID which links any comment to its location within Ada Township. When clicking on the link, the user is brought directly to a location on Google Maps where the original pin was dropped when the participant made a comment.

Detailed information regarding the topics and results are found in the Community Remarks© On-line Survey Summary.

Leadership Workshop Café

A Leadership Workshop Café was held on August 22, 2018. Approximately **35** community leaders participated in this event, which was by invitation only. Representation included persons from Ada Township Board of Trustees; Ada Township Planning Commission; Ada Township Parks, Recreation, and Land Preservation Advisory Board; the Ada Downtown Development Area Board and Citizens Council; Amway Corporation; Ada Business Association; Forest Hills Public Schools Community Services; DMC Design; Michigan Department of Natural Resources-Wildlife Division; Lowell Arts; Dixen Architecture;

Kent County Parks Department; Ada Historical Society; Ada Township Parks and Recreation staff; and youth representation from Forest Hills Public Schools.

The Leadership Workshop Café participants were asked to provide comments on eight topics relating to parks and recreation programs and amenities in Ada Township; recreational facilities used outside the Township; and on roadblocks or problems in providing recreation or access to recreation in Ada Township.

Results of the Leadership Workshop Café by topic, along with primary recommendations that emerged from each topic, are included in the Ada Township Recreation Needs Assessment Leadership Workshop Café Results and Primary Recommendations.

Workshop in a Box

The Workshop in a Box self-guided input method was complete by three civic groups: The Ada Rotary, the Adacraft Commons Association, and the O.W.L.S group (Older Wiser Lively Seniors) from St. Robert of Newminster Church. These three groups represented a cross-section of the population of Ada Township, including persons with business interests, a homeowners' association, and a senior group associated with a religious institution. A total **31** of persons were involved in the Workshop in a Box method.

Information sought from the participants of Workshop in a Box was similar to that sought from participants of the Leadership Workshop Café. Results obtained from the three groups was extensive; grouping of common ideas within groups was not practical, except in the case of information gathered for the Headley Street Property. However, the results from all three groups were combined, and this shows the common themes and ideas that emerged from the three groups when taken together as a whole.

The complete results of the Workshop in a Box method are included in the Ada Township Recreation Needs Assessment Workshop in a Box Results.

Common Themes

Input gained from the stakeholder engagement methods covers a broad range; to attempt to combine all the data from the three methods of input may result in a diminishing of the results; rather, Ada Township is encouraged to examine the results of each input method and to use the data to inform future decisions regarding parks, recreation facilities and amenities, and recreation programming.

Certainly, common themes are evident in the results of the stakeholder input, and in general some of these themes include (but are not limited to) the following:

- High value for water access and development of water trails
- High value for land-based trails, including bike paths, and a desire to expand and improve the system
- A strong desire for water access in the form of a splash pad or pool
- A desire for programs for all age groups and blended age groups
- High value for organized fitness programs and opportunities
- A desire for more green space, both large and small
- Continued discussion on use of the Headley Street Property is indicated

- A recognition that some activities that are used outside the Township will continue to be used
- A fairly strong desire for a location for ice skating

Additionally, unique ideas were presented that may have been mentioned less often, but could be considered by Ada Township if a champion for that ideas emerges, or staff becomes available; one example is to provide a rink for Bicycle Polo; another is to offer a competition similar to Ninja Warrior.

ADA TOWNSHIP RECREATION NEEDS ASSESSMENT

**COMMUNITY REMARKS©
RESULTS**

*Prepared by MainStreet Planning Company
September 13, 2018*

COMMUNITY REMARKS® ON-LINE SURVEY SUMMARY

*Prepared by MainStreet Planning Company
September 13, 2018*

An important component of the Ada Township Recreational Needs Assessment was the Community Remarks® interactive on-line survey. The on-line survey format allowed participants to post comments on a map of the Township under certain topic areas. Others taking the survey could post their comments in response thus creating the opportunity for an on-line conversation with each other.

The Community Remarks® survey was available for use on the Township website from July 3rd through July 22nd of 2018. A total of 350 comments were posted which included the original comment plus the “like” and “dislike” responses. The topics, as they appeared on the survey, are:

Existing Parks Facilities

Parks, Playgrounds, and Recreation Facilities

New locations/ideas

Trails

New locations, connections

Proposed Green Space

Large and small locations

Headley Street Property

One more topic was presented on the survey called “Recreational facilities used outside of Ada Township”. No responses were received for this topic, however.

The following pages contain a summary of the most frequent comments that were posted under each topic category. In summarizing the comments, efforts were made to group them by sub-topic according to their similarity to each other. For instance, in the category Trails, one sub-topic became “Trail connections to parks” as several respondents stated a need to construct trails to access several Township parks.

The summary includes the number of votes a particular comment received from others taking the survey which allows a reader to quickly determine those ideas that rose to the top.

Not all comments were easily grouped and many comments did not receive any votes. Other comments received did not pertain to the topic or were too vague to be grouped. A complete list of comments posted is found in the document entitled *Community Remarks® Complete List of Comments*.

COMMUNITY REMARKS® RESULTS

EXISTING PARKS & FACILITIES

Most Frequent Comments

	<u>Votes:</u>	<u>Like</u>	<u>Dislike</u>
1. Roselle Park Improvements:			
▪ Add a Disc Golf Course	6		1
▪ Wedding Chapel	1		
2. Splash pad needed:			
▪ Settlers Grove Park	13		2
▪ Leonard Field	2		1
▪ Downtown Ada	1		
▪ Ada Park	5		
3. Kayak launch needed:			
▪ Leonard Field	2		1
▪ Chief Hazy Cloud Park	2		
▪ DNR launch Fulton Street	2		
4. Dog park needed:			
▪ Settlers Grove Park	7		
5. Bike path needed:			
▪ Pettis Avenue to connect to Forest Hill Eastern High School	3		
▪ Continue to link Honey Creek Avenue to Cannon Twp. paths	4		
6. Community garden needed:			
▪ Settlers Grove Park	2		
▪ Headley Street Property	2		
7. Beers at the Bridge			
▪ Love it!	5		
8. Keep the Headley Street property green; add more trees	3		

The remaining responses for this topic were single comments that did not receive a response and are not reflected in the above summary. Other comments pertained to maintenance or non-recreation matters. A complete list of comments posted is found in the document entitled *Community Remarks® Complete List of Comments*.

COMMUNITY REMARKS® RESULTS

PARKS, PLAYGROUNDS & RECREATION FACILITIES

NEW LOCATIONS & IDEAS

Most Frequent Comments

	<u>Votes:</u>	<u>Like</u>	<u>Dislike</u>
1. <i>Splash pad needed:</i>			
▪ A specific location for the splash pad was not provided with the original comment which noted that a splash pad would draw people to the stores and restaurants. Although the original comment pin was dropped north of the River along Bailey Street, 14 other people posted “likes.” It is assumed the originator of the comment meant the location to be in downtown Ada and not on Bailey Street.	15		1
▪ Settlers Grove Park	14		
▪ Ada Park	8		1
▪ Downtown Ada	2		
2. <i>Disc golf course needed:</i>			
▪ Ada Park	5		1
3. <i>Invasive species removal</i>			
▪ Seidman Park	3		
4. <i>Amphitheater needed:</i>			
▪ Settlers Grove Park	2		

The remaining responses for this topic were single comments that did not receive a response and are not reflected in the above summary. Other comments pertained to maintenance issues or non -recreation matters. A complete list of comments posted is found in the document entitled *Community Remarks® Complete List of Comments*.

COMMUNITY REMARKS® RESULTS

TRAILS

NEW LOCATIONS & CONNECTIONS

Most Frequent Comments

	<u>Votes:</u>	<u>Like</u>	<u>Dislike</u>
1. Trails within the village or leading to the downtown needed:			
▪ Along Rix Street		42	2
▪ Thornapple Drive/ Fase Street intersection		9	
▪ Ada Drive through the downtown		18	
▪ Buttrick Avenue from Thornapple River Drive to Grand River Drive		5	
▪ Provide a crossing over the railroad tracks to connect Rix and Bronson		6	
2. Trails from nearby neighborhoods north of Fulton to downtown Ada needed:			
▪ Longleaf Subdivision to downtown		3	
▪ Vergennes Street to downtown		4	
3. Trails in rural portions of Township needed:			
▪ McCabe Avenue between 2 Mile Road and Conservation Street		6	
4. Trail connections to parks needed:			
▪ Chief Hazy Cloud Park		7	
▪ Honey Creek Avenue from Pettis to Seidman Park		6	
5. Provide a trail within the railroad right of way between Ada and Lowell and over the Thornapple River to provide a safer crossing over Thornapple River Drive and Fase Street into downtown Ada:			7
6. Provide a pedestrian bridge over Fulton Street to connect the downtown to Amway:			7

The remaining responses for this topic were single comments that did not receive a response and are not reflected in the above summary. Other comments pertained to trail maintenance issues or traffic and pedestrian safety issues. A complete list of comments posted is found in the document entitled *Community Remarks® Complete List of Comments*.

COMMUNITY REMARKS® RESULTS

PROPOSED GREEN SPACE

LARGE & SMALL LOCATIONS

Most Frequent Comments

	<u>Votes:</u>	<u>Like</u>	<u>Dislike</u>
1. Retain the green space between the Post Office and the State Farm Insurance office building:		4	
2. Keep the Headley Street Property green:		2	

A complete list of comments posted is found in the document entitled *Community Remarks® Complete List of Comments*.

COMMUNITY REMARKS® RESULTS

HEADLEY STREET PROPERTY

Most Frequent Comments

Votes: Like Dislike

1. This would be a terrific place for a splash pad as part of a larger park due to its library proximity. Maybe a well-maintained community garden where township residents could rent plots annually. Plant a variety of trees throughout the property to provide natural shade while still allowing kids to run around and play: 2

NOTE: This category received only the above comment. However, the Headley Street property received the following comments in several other categories:

2. Use as a community garden 2
3. Keep this area green 4
4. Provide more trees in this space. 3

A complete list of comments posted is found in the document entitled *Community Remarks® Complete List of Comments*.



Ada Township Recreation Needs Assessment

Commenting is now closed. Thank you for participating.



Ada Township Recreation Needs Assessment

Commenting is now closed.

Filter Map Comments

- Map Layers
 - Township Boundary
 - Trails
 - North County Trail
 - Private Recreation Facilities
 - Public Recreation Facilities
- REMOVE ALL LAYERS

Comments

- Existing Parks Facilities
- Parks, Playgrounds, and Recreation Facilities New locations/ideas
- Trails New locations, connections
- Proposed Green Space Large and small locations

Noelle Divozzo

4

2 months ago



Existing Parks Facilities

ID	Name	Email	Votes	Dislikes	Description
56	Anonymous		11		Install a "Hidden Drive" and/or "Slow Down" and/or "Speed Limit 15 mph" sign/s on Ada Dr just west of Bronson St at the Train Bridge because Rix St is hidden to westbound traffic travelling along Ada Dr and traffic turning off Rix St onto Ada Dr cannot see oncoming westbound traffic. Several accidents and many near misses have already occurred at this intersection and increased traffic will only increase the risk of more accidents if this is not addressed.
73	Kristen Bennett	kristen.schlaff@gmail.com	6		Would love to see a dog park in Ada! Perhaps one with access to the River as well.
104	Anonymous		6		A splash pad in the new settler grove park near the playground or maybe one on the headly street property would be a great addition for kids
44	Anonymous		5	1	Install a kids Splashpad! See the revised Aberdeen park in Grand Rapids area for inspiration.
42	Anonymous		4	1	Install a splash pad! See The revised Aberdeen park in Grand Rapids for inspiration.
38	Robert		3	1	Could the township add a disc golf course at Roselle Park? Or somewhere else in the township?
43	Anonymous		3		I am a KCCL Neighbor and have noted that they"fire" sometimes outside of their days / hours. Also, I have noted that some of the shots have gotten increasingly louder. Anything that can be done to "tone down" the noise pollution would be very much appreciated by the neighbors.
79	Anonymous		3		continue to link Honey creek Rd with Cannon Twp bike paths.
41	Anonymous		2		Make the lookout at the top of the silo accessible not locked all the time.
72	Kristen Bennett	kristen.schlaff@gmail.com	2		Love Beers at the Bridge at Leonard park! We would love to see a fall event like this as well!
87	Anonymous	sguitar721@gmail.com	2		Please keep this space green, however, please forest this property with a variety of trees to beautify the area. A heavily wooded area would beautify Headly/Fulton and screen Amway.
61	Anonymous		1	1	Would love to see to see something besides a baseball/softball field at Leonard Field. It's a nice public gathering place for special events like Beers on the Bridge but the fence and dirt infield limit its use for other activities. This could be a good location for a kayak launch or splash pad although parking is limited.
110	Anonymous		1	1	would like to see a trash barrel located at the boat launch site.
40	Anonymous		1		A lovely, underutilized roadside park. A kayak/boat launch/fishing pier would be appreciated. A visible boardwalk w/launch would encourage boaters to put in here for trips to the Knapp bridge launch and beyond. The Ada launch is quite isolated behind Amway.
37	Anonymous		1		Gorgeous resource building! And a huge fan of the silo climbing wall!
35	Anonymous	khallgren@rjm-design.com	1		Love Beers at the Bridge!
47	Anonymous		1		The nature trail adjacent to the school has not been well maintained. Overgrown. Expansion of it around the school property would be great.
48	Anonymous		1		Please improve the fishing pond maintenance/stocking of fish, bridge repair. We sould spend a lot more time there if it was improved.
60	Anonymous		1		Nice to keep this as green space or a public gathering venue for special events
65	Margaret Idema	marg609@mail.com	1		I see the DNR boat ramp on the map...since I am a new kayak owner, I would like to see maps available for all the boat ramps. I have a map from the internet but it's hard to read. I'd like one that be easily read with distances, amenities where ramps exist, et.
67	Anonymous		1		Open road north within park. Trim trees to enable fish casting from shore, Add a dock or 2 for fishing. Add a few picnic tables. Open restroom and service.
71	Anonymous		1		Lack of non-motorized trail along Pettis severely limits access into Ada Village, especially from the High School. This section of road is especially dangerous with narrow shoulders and guardrails making

				it dicey for even pedestrians.
74	Kristen Bennett	kristen.schlaff@gmail.com	1	Is there opportunity for a community vegetable garden? Perhaps this engages the school system by education young kids on the process of growing and eating healthy foods. It could also call on volunteers in the community to help with maintenance and planting. Community members could sign up purchase crops at a low price, which would help pay for the maintenance.
93	Jenny Vell		1	Plans to add more areas for kayaks to enter the water systems would be greatly appreciated!
100	Fiona Hert	fiona@olyphen.com	1	Could doggie waste bags be installed and garbage cans?
114	Anonymous		1	trail basically runs on the shoulder of the road. very poor design. not safe, particularly when there is trail traffic in both directions
115	John		1	Roselle Park would be a great spot for a Disc Golf course. Disc Golf is an inexpensive outdoor recreational activity that can be played by all ages and by all socioeconomic levels.
117	Warren		1	Would like to see an"accessible" kayak launch, like the one in Lowell.
119	Anonymous	Stephaniejmathis@gmail.com	1	The speed limit on Ada drive needs to be 35mph instead of 45mph. People drive way too fast and with the addition of another school on that street, traffic will be increasing.
130	Anonymous		1	Would love to see a splash pad somewhere in downtown ada!
70	Anonymous		1	Ada Township needs more shooting ranges that are open during normal hours when people use them. This very short sighted policy just forces more people to target shoot at their homes (which is 100% legal anywhere in the state if not hunting) Remove restrictions on KCCL operating hours and the noise complaints would drop as most of the complainers are actually hearing private property shooting scattered all over the township and concentrate it back in one central location better equipped to facilitate it.
36	Anonymous			Nice waterfront views, but not much else going on in this park.
59	Anonymous			Stoney Lake in Lowell is a nice place to swim with the family. No motorized boats.
66	Holly Cook	hollybergaz@yahoo.com		We love Seidman Park just as it is, please don't change anything.
75	Anonymous			Downtown Ada needs a coffee shop/work cafe that supports local business persons. A place that offers that connections to down town, daylight access, power access and a variety of comfortable seating options and a simple breakfast & lunch menu. Jam N'Bean does none of these things. Such a missed opportunity.
78	Anonymous			Maybe this is a good place for a community garden? It would be close to the future Community Center/Library.
85	Anonymous	jgvahal@gmail.com		We love the expanded parking lot and the playground/climbing area!
94	Anonymous			The parking and signage for the walking path along the Grand River needs to be improved. It is lovely walk, but I never know where to park.
95	Anonymous			I love the Peace Park. Signage is very clear and the trails are great.
116	John			Where does one park to explore Carl Creek Preserve?
118	Warren			I'd love to see a "Town Square" somewhere near the center of Ada. A place for people to gather, perhaps with a fountain, public art, seating, etc. Could be situated along Ada Dr. between the new development east of Headley and the existing shops, etc. to the west, to tie together the old and new. (Get rid of the service station!!)
126	Anonymous			I think a wedding chapel at Roselle Park would be a good addition.
127	Anonymous			A bike path along Pettis is needed. Students and families cannot commute to FHS on bike or foot safely. Many families would prefer to walk or bike rather than drive to crowded events such as sporting events, musicals/concerts. Also, fans are parked along Pettis or 2 mile Rd during crowded sporting events and walking to the school. There are no street lights on Pettis and it dangerous for pedestrians to be parked alongside Pettis.
131	Anonymous			We live very close to the KCCL and there are nights that people are shooting as late as 10:30pm. It's frustrating as a parent to be putting kids to sleep hearing the not-so-soothing sounds of gunshot that late at night. I also wish there was more consistency with hours overall so we could know when to expect a truly quiet time!
134	Janet Sparks	janargos@comcast.net		I enjoy Roselle several days each week. This year, the "off-path" grassy paths are not being mowed as in the past. I'm a senior and I like to be able to see where I am stepping! Also, it would be nice to have a dog poop disposal can by the new parking lot.
136	Ryan Formsma	rformsma@erhardtcc.com		I think there needs to be more maintenance to the bike/ped path. Often times there is debris from storms or just in general overgrowth on the paths. A few years ago they passed a millage to increase the parks and rec budget to address this but I really don't see any improvement/changes to the paths.

Headley Street Properties

ID	Name	Email	Votes	Dislikes	loc_desc
103	Anonymous			1	This would be a terrific place for a splash pad as part of a larger park due to it's library proximity. Maybe a well-maintained community garden where township residents could rent plots annually. Plant a variety of trees throughout the property to provide natural shade while still allowing kids to run around and play.

Parks, Playgrounds, and Recreation Facilities

ID	Name	Email	Votes	Dislikes	Description	Features
39	Anonymous		14	1	A Splash pad for kids would draw in a lot of people from surrounding areas. They would then more likely browse all the new stores and eat at some of our great restaurants!	
105	Lucas Andrusiak	lucas.andrusiak@gmail.com	11		I am suggesting to install a splash pad near the river/community center. I think it would complement the plans for the canoe/kayak rental attraction. This way, the canoe/kayak can attract families with older children while the splash pad can attract those families who have younger children. Additionally, I believe this would be a nice way to cool off after a hot canoe/kayak trip.	
88	Hans Whitmer	convertcorner@yahoo.com	7		Seeing the large cement slabs recently laid down at Ada Park made my wife and I think how great it would be to have a splash pad at the park. Has this idea ever been considered?	
132	Anonymous	Travisspaman@gmail.com	5		We need a stop light at Rix and Adaway. When turning from Rix to adaway, you can see oncoming traffic from downtown Ada and they are going much faster than the speed limit.	
58	Anonymous		4	1	We would like to see a disc golf course in Ada Township.	Disc Golf
112	Anonymous	kendra.tabor@gmail.com	2		I would like to see more ways to get involved with invasive species removal. The oriental bittersweet and multiflora rose at Siedman Park is getting really bad.	
102	Anonymous		1		Amphitheater	Provide an outdoor venue for music concerts or festivals such as Jazz.
124	Anonymous		1		A space similar to Rosa Parks Circle in downtown Ada would be fantastic and would bring the community together. A splash pad that could double as an outdoor ice skating rink would be amazing!!!	
68	Mitchell DeJong	mitchpdejong@gmail.com		1	I'd love to see a skate park. Young people that don't do organized sports like to do this activity.	It would be great to see a skate park as my friends and I participate in this sport.
84	Anonymous	jgvanhal@gmail.com			Ada park has a lovely nature program for 3-5 year olds during the school year and some great camps during the summer. We would love to see some programming for school age kids during the school year in the evening or on the weekends. Programs that the entire family could enjoy together would be nice, as well.	
123	Anonymous				A space similar to Rosa Parks Circle in downtown Ada would be fantastic and would bring the community together. A splash pad that could double as an outdoor ice skating rink would be amazing!!!	
125	Anonymous			1	A space similar to Rosa Parks Circle in downtown Ada would be fantastic and would bring the community together. A splash pad that could double as an outdoor ice skating rink would be amazing!!!	
133	Rikki				I'd love to have a dog park in the area. They are a nice way for people to get to know other members of their community as well as provide beneficial social interactions between dogs. http://srpplayground.com/benefits-of-dog-parks-in-communities	Dog Park

Proposed Green Space

ID	Name	Email	Votes	Dislikes	Description
91	Noelle Divozzo	ndivozzo@gmail.com	4		It would be wonderful to see this current green space between the post office and the State Farm building remain green rather than sold for office/retail as it's currently zoned. We don't need more businesses and it would help replace all the green space lost in the past 2 years including across the street from this site at the historical museum.
81	Anonymous		1		Keep green space open please
121	Michelle K.	michelle.eliza4@gmail.com			Safe crossing space for everyone.

Trails

ID	Name	Email	Votes	Dislikes	Description
50	Steve Tanyko	steve.tanyko@wwwinc.com	32		My wife and I live off Adaside and enjoy walking our dog to Downtown Ada for events like Beers on the Bridge. Since there is no path, we end up walking along the street. Too many times over the two and a half years we've lived in our house have we seen cars going way to fast along Rix. Since we're on the street, it's dangerous. We'd really like to see a trail or sidewalk that connects downtown with the neighborhood. Without a path, we're concerned someone is going to get by a car one day.
63	Ryan Falk		17		A bike line or connector of some kind for the non-motorized trail through the village on Ada Drive by the shopping and dining core would be a great way to increase traffic to the brewery, shops, etc.
83	Anonymous	jgvanhal@gmail.com	8		Install convex mirrors so that traffic coming from Rix and the new housing development across the street can see cars coming from the downtown area. This intersection is very dangerous, particularly when it is icy and difficult to brake at the bottom of the hill.
62	Anonymous		6		I would like to see a footbridge over Fulton to safely connect the two sides of the non-motorized trail.
90	Anonymous		5		I would like to see a crossing over the tracks connecting Rix and Bronson. There is a path there now but you need to maneuver through weeds and railroad tracks. It would be nice to connect the Adatowne neighborhood with west side of Ada.
113	Anonymous		5		I would love to see a walking path put in along Rix. This street is so dangerous for walkers and bikers.
45	Anonymous		4		It would be great to complete the path along Buttrick from Grand River to Thornapple River and to fill in existing cracks and uneven surfaces on the path. My stroller completely flipped the other day when the front wheel hit one of the uneven surfaces on the path by the Ada Park ball fields!
77	Kevin McAndrew	kpm1111@sbcglobal.net	4		Rails to Trails - what is the possibility of converting the rail line that runs from Ada to Lowell into a trail? Is the 'on demand' train service into Lowell critical for the businesses which utilize the service (which I would absolutely understand if it were) or is it a convenient form of transportation. This could also solve the issue of crossing Thornapple River Dr. at Fase St. (Georgie's - Leonard Field).
49	Dan Hubers	dan.hubers@gmail.com	3		A path along Honey Creek Ave (connecting downtown to Seidman park) would be amazing. Honey Creek is pretty dangerous to walk / bike on with the hills and relatively narrow shoulder.
55	Gordon Sible	grsible@gmail.com	3		The bike path needs to be extended along McCabe between Conservation and 2 Mile. This would significantly increase the access to the bike for approximately 80 homes, as well as reduce the likelihood of car/bike/pedestrian incidents.
76	Anonymous		3		Please continue trail system to include Chief Hazy Cloud park
101	Anonymous		3		A trail along vergennes to provide safer access to downtown ada for cyclists and potential walkers. Currently the road has no walking access and is extremely dangerous. It is disconnected with the ADA trail network access. This could also provide a connection between Lowell trails and increasing accessibility to Ada for other communities.
120	Michelle K.	michelle.eliza4@gmail.com	3		Adding a sidewalk/trail into Ada to safely come from neighborhoods nearby
57	Michael D Veldstra	michaeldavidveldstra@gmail.com	2		Please connect chief hazy cloud to trail system

69	Anonymous		2	Trim low tree branches and shrub growth that conflict with bikers and walkers
86	Anonymous	sguitar721@gmail.com	2	I would like to see the foot trail segment of the Grand River Trail paved. I would like to see it connected to the Ada Moorings trail or connected to Fase Street. I would like to see it also connected via bridge over the Thornapple River into downtown and the new riverside park.
92	Anonymous		2	We love the bike trails and use them almost everyday but they really need some significant maintenance/repair. Many sections are in bad shape and present safety hazards to walkers, runner and bikers.
96	Anonymous	Mambajahamba@gmail.com	2	Many small children and walkers in this area and the cars (Ada Vista and Ada woods people cutting through) come down this hill or around this corner ENTIRELY too fast, something needs to be done (speed bumps, stop sign, police enforcement).
97	Trini Nichols	ada369@comcast.net	2	I live off Rix and the constant speeding up and down Rix is dangerous to all pedestrian, biking, dog-walking, etc., traffic. Controls need to be put in place before there's a fatal accident.
122	Anonymous		2	A trail/sidewalk/footbridge connecting this side of town to Fase street would be nice so pedestrians don't need to cross the very dangerous spot at Thornapple River Drive at ball park and Fase street.
128	Dawn Bebout	dhbebout@mac.com	2	A safer, better way to cross Thornapple River Rd from Fase Street is desperately needed. Please do not wait for a tragedy to occur before making a change. I live in Ada Moorings (along with 230+ other homeowners) and we love being able to walk and ride our bikes in to the Village but the intersection of Thornapple and Fase could and should be safer - all of the crosswalks in Ada Village could and should be safer.
129	Anonymous		2	Would love to see a bridge from fase street to the downtown to avoid having to cross thorn apple.
51	Gordon Sible	grsible@gmail.com	1	The bike path needs to be extended along McCabe between Conservation and 2 Mile. This would significantly increase the access to the bike for approximately 80 homes, as well as reduce the likelihood of car/bike/pedestrian incidents.
53	Gordon Sible	grsible@gmail.com	1	The bike path needs to be extended along McCabe between Conservation and 2 Mile. This would significantly increase the access to the bike for approximately 80 homes, as well as reduce the likelihood of car/bike/pedestrian incidents.
80	Paul Bonis	pbonis@gmail.com	1	A walkway/bike path from the Longleaf development into our beautiful new Ada downtown.
82	Hanna Demerath	hannademmerath@gmail.com	1	As a resident that lives on Spaulding AVE near Ada DR. I believe a sidewalk that runs down Spaulding Ave would be a great addition not only for safety but for access to the trail system that runs down Ada DR. Spaulding AVE is such a busy road especially near Ada DR. On top of that the speed limit is 45mph. I often see bikers and walkers passing by that have to use the shoulder or even the grass along the road, right alongside traffic that's speeding up or already going 45mph. Most of these travelers are trying to access the Ada Drive trail. I know that there is a road widening plan coming very soon, which will help with car congestion but a sidewalk would improve the safe for everyone.
98	Anonymous		1	It would be wonderful to have a pedestrian bridge over Grand River. I see it's in the master plan but when will it happen?
106	Sue Bakkila	Sue@bakkila.me	1	Long term plan with Kent County needs to address the lack of connection between trails on east and west side of the river. The Knapp bridge is a safety hazard for bikers and about impossible for a pedestrian. No family in their right mind would attempt crossing that bridge where people regularly drive 60 MPH. Students can't commute to Eastern or even Knapp Forest safely. No loop from Ada because if this missing trail segment. Pettis also needs dedicated bike lanes when next resurfaced.
111	Anonymous	kendra.tabor@gmail.com	1	I would really love to see a non-motorized trail on Honey Creek from Conservation (Siedman Park) to Pettis.
46	Anonymous		1	Expansion of trails to include more visible riverside access would be nice.
52	Gordon Sible	grsible@gmail.com		The bike path needs to be extended along McCabe between Conservation and 2 Mile. This would significantly increase the access to the bike for approximately 80 homes, as well as reduce the likelihood of car/bike/pedestrian incidents.
64	Anonymous			Trail extension on 28th Street east of Buttrick would allow a large population to access the Cascade trail system.
89	Michelle Fox	mlynnfox@comcast.net		We are requesting a walk-way be built from Longleaf neighborhood into downtown Ada. We used to live in Longleaf - and are currently building a new home back in the Longleaf neighborhood -- and have a child in a wheelchair -- so, the path would make life much easier to go for walks and bike rides. Please consider this request from so many neighbors and work to make this a plan. Much appreciated!!
99	Fiona Hert	fiona@olypen.com		At this intersection of the trail, outside of Amway, and across the street from Ada Drive, Amway employees smoke and leave their cigarette butts. Can an ashtray be installed that is impervious to weather and reduces the unsightliness of the cigarette butts?
107	Sue Bakkila	Sue@bakkila.me		Long term plan with Kent County needs to address the lack of connection between trails on east and west side of the river. The Knapp bridge is a safety hazard for bikers and about impossible for a pedestrian. No family in their right mind would attempt crossing that bridge where people regularly drive 60 MPH. Students can't commute to Eastern or even Knapp Forest safely. No loop from Ada because if this missing trail segment. Pettis also needs dedicated bike lanes when next resurfaced.

108	Sue Bakkila	Sue@bakkila.me			Four way stop needed at this intersection as well as traffic calming. Pedestrians cannot safely cross here anymore and difficult for drivers to see west up the road with cars parked at hardware, Nona's, etc. traffic calming needed on that whole stretch. Ada is friendly to cars, not necessarily people.
135	Anonymous	goodknight2u@comcast.net			trail with access to river shore line for fishing .

**ADA TOWNSHIP RECREATION NEEDS ASSESSMENT
LEADERSHIP WORKSHOP CAFÉ
RESULTS AND PRIMARY RECOMMENDATIONS**

*Prepared by MainStreet Planning Company
September 13, 2018*

Recreation Programming – What Do We Need?

List programs you use in Ada Township that could be expanded or improved and how.

	<u>Agree</u>
1. Ice Skating Rink	10
<ul style="list-style-type: none"> • Find a permanent location for a rink, maybe Leonard Field • Already existing concrete pad • Offer skate rentals on site • Skating and/or broom ball leagues at Leonard Field on the ice 	9
2. Beers on the Bridge, Brats, and Bonfires	10
<ul style="list-style-type: none"> • Engage more volunteers • Proper policing • A larger space 	
3. Family Programs	7
<ul style="list-style-type: none"> • More youth, family, and adult programming (nature hikes, wildflower walks, night hikes) • Photo treasure hunt • Geocaching • Fountain where kids can play (Leslie Tassel) 	1 6 1
4. Organized Fitness Programs: Cross country skiing, tennis, pickle ball, yoga, bike meet-ups and other leagues.	7
<ul style="list-style-type: none"> • Consistent fitness program schedule at the park • Events should be for children and adults • Make park available for repeat programs that are free, such as yoga • Instruction in pickle ball and tennis • Incentive for riding or running all the trails; (e.g. a patch license for bike/kayak) • Weekly fitness at the park classes and/or Roselle building for adults and kids • Organized adult kayaking/canoeing trips 	4 8 3 9
5. Fishing Tournament	7
6. Overnights at Roselle Park (for long range hikers and bikers)	6
7. Encourage volunteering in parks like free programming for volunteers	3
8. Octoberfest with a bonfire	2
<ul style="list-style-type: none"> • Move to bigger location 	
9. Farmers Market Expansion	1
<ul style="list-style-type: none"> • More advertising 	

10. Swing Dancing area - amphitheater

Top four high energy ideas:

- | | |
|--|----------|
| 1. Skating and/or broom ball leagues at Leonard Field on the ice | 9 |
| 2. Instruction in pickleball and tennis | 8 |
| 3. Organized fitness programs for both kids and adults consistent with fitness at the park, (cross country skiing, tennis and pickle ball leagues, yoga, bike meet-ups, etc.) | 7 |
| 4. Kayak storage building with rentals like in East Grand Rapids | 2 |

Primary Recommendations from this Topic:

- Ice Skating activities are highly desired.
- Beers on the Bridge could be expanded and improved.
- Family programming is important; activities that involve a range of ages are highly desired; this is expressed in both items 3 and 4.
- Organized fitness programs are highly desired; pickle ball and tennis scored highly as did adult kayaking and canoeing.
- Desire for a fishing tournament scored fairly highly.
- Overnights at Roselle Park scored fairly highly.

Dream Big - Proposed Recreation Facilities inside Ada Township

What do you wish could be built / provided in Ada Township?

	<u>Agree</u>
1. Marina or dock for water access / Access to the river above or below the dam	23
2. Equestrian trail or a section of the existing trail system for equestrian trails	15
3. Linking all trails to achieve one big loop around the Township	14
4. Place to rent recreational equipment	12
5. Community Garden or Co-Op	11
6. Dog park	11
7. Art sculptures in park	10
8. Place to swim outdoors at either a beach on a lake. This could possibly be Reith Riley Pond	10
9. Consistent community recreational programs (Yoga in the park, organize runs)	10
10. Outdoor movie showings or a drive-in movie (3 additional votes for a drive-in movie)	9
11. Organizations that can organize events - Evolve Ada Business Association into Chamber of Commerce)	9
12. Ninja warriors	8
13. Bigger venue for events such as Beers at the Bridge. Possibly convert Leonard field to special event area.	7
14. Cross Country ski trails along the trails. Trails decided by community recreational organization.	6
15. Fireworks downtown Ada	5
16. Add open space by connecting corridors and pursuing critical connecting land parcels	5
17. Utilize and add bike trails more often	4
18. Skate park	3
19. Water park	2
20. Outdoor fire place	1
21. Pottery or canvas art studio for kids and families	0
22. Parking garage for easy access to park	0
23. Fitness trail	0
24. How do we do this? Staffing?	0
 Top five high energy ideas:	
1. Having a section of the trails for equestrian use	15
2. Linking all trails to achieve one big loop around Ada Township	14
3. Consistent community recreational programs	10
4. Trails – ski, walking, <u>water</u>, equestrian (new high energy comment)	0
5. Land Acquisition for open spaces/improve access to the Grand River (new high energy comment)	0

Primary Recommendations from this Topic:

- Water access is of high importance.
- Equestrian trails are of high importance.
- Trails and linking of trails throughout the Township are of high importance; comments included all types of trails.
- Renting of recreational equipment scored fairly highly; the notes do not specify which type of equipment; but this could be discerned in a follow up survey by the Township.
- Comments 5-9 received ten or more “Agree” votes; these comments include a variety of facilities or programs; one comment favors art, which is a topic related to recreation under current trends.
- The remainder of ideas, while not receiving the greatest number of “Agree” votes, include unique ideas that the Township may wish to pursue, such as Ninja Warrior, a larger special events area, water park, etc.

Do Roadblocks, Issues, and Problems Exist in Providing Recreation or Access to Recreation in Ada Township?

What is the issue or problem? What is something that may fix the problem?

	<u>Agree</u>
1. Investment in recreation registration software and establishment of a park office that is open evenings and weekends.*	
• Agree with software but not with keeping park office open evenings/weekends	17
2. Difficult to register for programs and rentals. There is no online registration process and limited office hours.*	16
3. There is a lack of indoor space to conduct programs. Most are outdoors.*	14
4. Lack of diversity in programs offered. Most are focused towards children.*	13
5. Lack of programs offered due to lack of staff. This may not be a focus of the department. Lack of commitment to increased programming through funding/staffing.	12
6. The Ada Township website is cumbersome to navigate; the location of minutes is difficult to find; it is difficult to find program lists; and info is not up to date.	10
7. Determine what programs the Township would like to offer and either have staff or contract employees lead them.*	8
8. Not being able to rent space online makes it inaccessible to provide rec programs.	7
9. Too much emphasis on programming and not enough on preserving and protecting open space.	6
10. Thornapple River Association. <i>(Small devil face included)</i>	6
11. Have access to a multipurpose facility in downtown Ada.	5
12. Hire volunteers to assist with operations. College age kids or internships; recreation therapy for example.	4
13. New green space and parks are valuable; “selling” the idea to residents who might not want increased taxes.	4

- 14. Finances and time are a problem. Are parks are appropriately funded? Money! 0
- 15. Land locked. 0
- 16. The Township is addressing some roadblocks to rec programs. 0
- 17. The Township needs to decide if the recreation program is a priority. If it is, then put the funding and staffing into it to do it right.* 0

***This group did not highlight the ideas that generated high energy; but they did place an asterisk next to several ideas, which may indicate high energy; these ideas are shown with an asterisk.**

Recreational Facilities We Use Located Outside Ada Township

What recreational facilities/programs outside Ada Township do you or your family use? Where is the facility located?

- A) If Ada Township had this facility or program, would you use it?
 B) Or, would you continue to use it the facility or program outside the Township?

	<u>A</u>	<u>B</u>
1. Community swimming pool/ Forest Hills swimming pools & natatorium/ Orchard Hills and MVP swimming pools	16	16
2. Libraries in other towns (Cascade Library)	15	0
3. Kayaking and river activities	13	1
4. Dog / pet parks (Shaggy Pines)	10	1
5. Patterson Ice Arena/ Rosa Park ice rink/ Skate park/ice rink (artificial ice)	8	0
6. Cannonsburg Ski Area	8	0
7. Equestrian Trails	8	0
8. Reeds Lake / Lowell Stoney Creek	8	0
9. Turf fields (indoor)	6	0
10. Grand Haven volleyball courts	5	1
11. Outdoor movie theatre	5	0
12. Rockford / White Pines Trail bike path	5	10
13. State Parks	4	0
14. Historic Museums in other towns	4	6
15. Forest Hills Schools gyms and sports fields	3	2
16. Reeds Lake trail way	3	9
17. MSA basketball courts and indoor soccer fields	3	9
18. MVP Sportsplex/YMCA	2	10
19. Fishing opportunities	2	0
20. Mountain bike trails-none of	2	0
21. Indoor recreation facilities / turf field	0	0

Top three high energy ideas:

1. Skate park/Ice rink (artificial ice)	0	0
2. Kayaking and river activities	13	1
3. Indoor recreation facilities / turf field	0	0

(Note: At this table, some of the high energy items received no "Agree" votes; we believe this is due to the first group listing them as if they were titles under which other items could be listed; this could have been confusing to subsequent groups. In some cases, the title idea was listed later, and received several "Agree" votes, such as "turf fields" and "ice rink".)

Primary Recommendations from this Topic:

- The top three facilities or programs that persons would use if they were located in Ada Township are: a pool (although just as many persons said they would continue using the pool the currently use); libraries; and kayaking and river activities.
- A fairly high number of persons desire a dog/pet park.
- A fairly high (and equal) number of participants expressed that they would use an ice rink, a ski area, equestrian trails, and a facility similar to Reeds Lake/Lowell Stoney Creek.
- Following the higher priority items, a mix of various recreation facilities and programs were identified as those which participants would utilize if a similar facility was located in Ada Township.
- The facilities that persons are most likely to use whether a similar facility was located in Ada Township or not are: The White Pine Trail in Rockford; The MVP Sportsplex and the YMCA; The Reeds lake trail way; and the MSA (Michigan Sports Academies) basketball courts and indoor soccer fields. These facilities involve either a unique setting (Rockford and Reeds Lake in East Grand Rapids); or an opportunity for specialty training, leagues, or teams with which persons and/or their family members have a personal investment or attachment.

Green Space – What is it? Do we need more in Ada Township?

Do you think Ada Township needs more green space? If so where?

	<u>Agree</u>
1. Encourage or promote donations of property to Land Conservancy or similar entities.	14
2. Need more animal and plant corridors & connect them throughout the Township. The river is a natural corridor for many. Try to establish more corridors than we have at present.	12
3. Encourage clustered housing with bonuses for green spaces	10
4. Preserve existing green space in the village proper. Don't build any more greenspace.	9
5. Any river stream frontage	8
6. Preserve existing green space on the northeast part of the village - the farm land	7
7. Pocket parks- small green spaces in the midst of Ada Village development with rain gardens and benches	6
8. Need to continue working with the Fase family to acquire land on the southeast side of the Thornapple River	6
9. Protect green space on the north side of Fulton Street	5
10. We need to expand greenspace	3
11. Need more housing in the village with river trail.	2
12. Encourage smaller (3-acre) land parcels are encouraged if they're next to other green spaces or parks. This is especially important in heavily populated areas.	1

Top three high energy ideas (In no particular order):

1. Encourage or promote donations of property to land conservancy or similar entities	14
2. Pocket parks- small green spaces in the midst of Ada Village development with rain gardens and benches	6
3. Continue working with the Fase family to acquire land on the southeast side of the Thornapple River	6

Primary Recommendations from this Topic:

- The top three recommendations for increasing greenspace in the Township are; encourage more donations; establish more connecting plant and animal corridors; and encourage clustered housing.
- The next highest-ranking comment after the top three was to preserve existing green space in the village proper, but do not build any more.
- The next group of fairly high-ranking ideas addressed a range of green space ideas including: any river stream frontage; preserving existing green space in the northeast part of the village – the farm land (the comment on farm land may have been intended to address the northeast part of the Township, rather than the village); small green spaces such as pocket parks, rain gardens, and benches in the village; and acquisition of land on the southeast side of the Thornapple River owned by the Fase family.

- The remainder of ideas addressed further preservation of green space in general, and in somewhat specific locations such as north of Fulton (we believe this to mean in general north of Fulton, and not just in the village area); and in the form of a river trail in the village.
- No one left a comment on the page which asked “If not, why not?” in terms of preserving green space. However, comment #4 included nine votes that agreed that more green space in the village is not needed.
- In general, participants at this table provided a blend of support for both large and small green spaces, consisting of both larger natural areas and smaller civic spaces.

Enhancements to Existing Parks, Trails, and Recreational Facilities in Ada Township

Name the park or facility and suggest improvements or additions.

	<u>Agree</u>
1. Availability of kayak and paddle boards at parks to rent	19
2. Connectivity to neighboring trails, more than currently available	18
3. River trails: Connect parks by river trails	17
4. Available trail guides - add, perhaps, a map or an app that points out items of interest along the trail and the river. Better signage on the trail and possibly an online map.	16
5. Ice-skating rink or a multi-use area (Leonard, Headley), skating in winter; concerts; splash pad in summer	14
6. Splash pad	10
7. Openness to allowing individuals to use green space to offer free, fitness classes like yoga & boot camp/scheduled, consistent classes	9
8. More covered pavilions	8
9. Movies in the Park with a big screen	8
10. Boardwalks (i.e. Carl Creek Crossing Preserve)	6
11. Middle and high school aged programs	5
12. Skate park	5
13. Art classes in the park	4
14. Sculptures along trails (one person posted a "No!" follow up)	4
15. Ada park office - improvements and expansion	4
16. Dog park	4
17. Intentional/planned geocaching to draw families	3
18. Availability of fishing gear to rent	2
19. Improve river access boat ramp at Grand River east of Amway	2
20. Parking lot by bike trails	1
21. Festivals in the parks; rotating locations/venues (draw more people to parks they may not otherwise visit)	0

Top four high energy ideas:

1. Connectivity to neighboring trails, more than currently available	18
2. River trails: connect parks by river trails	17
3. Kayak rentals at parks (scored apart from the four paddleboard comments)	15
4. Ice skating rink or a multi-use area (Leonard, Headley), skating in winter; concerts; splash pad in summer	14

Primary Recommendations from this Topic:

- Ability to rent both kayaks and paddle boards were of high importance.
- Connectivity of both river trails and land-based trails were of high importance; using web-based technology for trail guidance, as well as paper maps and physical signs, received strong support.
- The idea of an ice-skating rink was presented along with a multi-use area for special events as well as a splash pad; these ideas received strong support.
- Fairly strong support was shown for a splash pad alone.
- Several ideas with moderate support followed the highest-ranking ideas; these additional ideas included a mix of topics such as the ability to offer free classes such as yoga and boot camp in the parks on a regular basis; more covered pavilions, and movies in the park.
- The remaining comments include a broad range of ideas, and include items which the Township may wish to pursue, especially since many of these ideas are mentioned multiple times under different table topic categories. Of note is that when the two art related ideas (comments #13 and #14) are combined, they score a total of 8 “Agree” votes, which indicates fairly strong support for including art as a recreational component.

New, Parks, Trails, and Amenities – Where?

Do you think Ada Township needs more parks, trails (Including water trails), and other amenities? If a park, what type of park? For any amenity, which location?

	<u>Agree</u>
1. Trails - Connect Hazy Cloud to existing trail system	16
1. Bicycle path all along Pettis - connect to Roselle Park - bridge across the river	12
2. Provide bathrooms and more (boat and canoe launch) at the Grand River boat launch and the DNR boat launch	11
3. Provide more poop bags & trash cans in the village, especially at the covered bridge	11
4. Connect Central Woodlands to trail system - Alta Dale Trail	7
5. Run trail down Spaulding	5
6. Enhance wildlife habitat along trails	5
7. Amenities to enhance water trails experience	2
8. Water access to/from village	2
9. Provide or improve water access from existing parks	2
10. Park - Vacant lots between Post Office & State Farm building in village	0
11. Provide crushed stone trails because they're easier to run on	0
12. Launch place on the east side of the river across from Roselle Park	0
13. Run trail up to Cannon Township	0
14. Marina/boat launch for water activities	0
15. Trails - Seek connectivity to trails outside township including water trails	0
16. Additional parks of open space land preservation type	0
17. Improve trail connectivity within the village	0
18. More covered pavilions and rental opportunities	0
 Top three high energy ideas:	
1. Marina and boat launch for water activities	0
2. Improve trail connectivity within the village	0
3. More covered pavilions and rental opportunities	0

Primary Recommendations from the Topic:

- The top idea at this table was to connect Chief Hazy Cloud Park to the existing trail system.
- Another strongly supported idea is a bicycle path all along Pettis Avenue that connect to Roselle Park; and a bridge across the Grand River.
- Two high-ranking ideas were to provide restrooms at boat launches (to our knowledge the DNR boat launch at Knapp Street includes a restroom). An equally high-ranking comment is to provide more bags for pet waste as well as trash cans in the village area.

- Ideas which scored with moderately high support addressed trails: connecting Central Woodlands to the trail system (an Alta Dale Avenue trail); adding a trail down Spaulding Avenue; and enhancing wildlife habitat along trails.
- Additional comments at this table include ideas for enhancing and improving water trails and land-based trails; water access; additional park space; and park amenities such as additional pavilions and park rental opportunities.

Use of Property on the North Side of Headley Street

What do you think is the best use of this property? Public/civic use? Private use? Specifically?

	<u>Agree</u>
1. Public use - green space, picnic tables, trails, covered pavilion (7 persons specifically noted "Don't Agree")	16
• Rain garden to help with surface runoff	8
2. Farmer's market permanent location (3 persons specifically noted "Don't Agree")	11
• Half parking (not certain if this received any "Agrees")	
3. Holiday carnival events	11
4. Mixed use - retail and parking	11
5. Design library/community center with public access restrooms	4
6. Ice skating rink	4
7. Head in parking off Headley	3
8. Band stand amphitheater	2
9. Outdoor fountain and lights	2
10. Community Garden/maybe half	0
11. Pretty/attractive parking garage with art on exposed walls like downtown Grand Rapids	0
12. Outdoor fountain without lights/different location	0

What are the major assets of this property?

1. Close to new library	17
2. Greenspace near downtown Ada	15
3. Creates a buffer between busy Fulton St. and the rest of Ada	9
4. Provides a location for outdoor Township recreational programs or library programs	7
5. Access to bike trail	5
6. Could be buffer with trees and plantings	5
7. Wetlands create opportunity for educational programs	0
8. Visible corridor/welcome entrance	0

What are the major challenges to this property?

- | | |
|---|----|
| 1. Close proximity to busy Fulton Street-create buffer with trees or berm | 13 |
| 2. Wetlands must be taken into consideration in planning | 5 |
| 3. Community garden (<i>Note: this was listed under major challenges</i>) | 2 |
| 4. Close to the lift station (stinks!) | 0 |

Top four high energy ideas:

- | | |
|---|----|
| 1. Public use - green space, picnic tables, trails, covered pavilion | 16 |
| 2. Mixed use – retail and parking | 11 |
| 3. Farmers market permanent location | 11 |
| 4. Holiday carnival events | 11 |

Primary Recommendations from the Topic:

- The top supported item at this table was to use the Headley Street property as a green space with some civic amenities such as picnic table, trails, and a covered pavilion. The comments included opposition stated as “Don’t Agree”, which may mirror the discussion held on this property in the recent past.
- The next highly rated idea was that of a permanent location for the Farmer’s market; again, some participants specifically noted “Don’t Agree”, which may mirror the discussion held on this property in the recent past.
- Strong support was shown for using the property as a space for holiday carnival events; and for a mixed use consisting of retail uses and parking.
- A range of ideas received moderate support, including library/community center, ice skating rink, parking, amphitheater, fountains, and community garden.
- Major assets included location near the new library; additional greenspace; buffer from Fulton Street; activity space; wetlands; and visibility as a welcoming entrance to the village.
- Challenges include proximity to Fulton Street; wetlands; and proximity to the lift station resulting in odor.
- **The four high-energy ideas noted at this table, as well as the highest-ranking items, indicate that a clear consensus on the use of this property has not yet developed.**

ADA TOWNSHIP RECREATION NEEDS ASSESSMENT

**WORKSHOP IN A BOX
RESULTS**

*Prepared by MainStreet Planning Company
September 13, 2018*

ADA TOWNSHIP RECREATIONAL NEEDS ASSESSMENT 2018

WORKSHOP IN A BOX

Ada Rotary-9 Participants

- 1. What is the best use of the property on the north side of Headley Street, south of Fulton Street? List both public and private uses if you wish.**

Garden, green space, park (7)

Retail (2)

Dog park (1)

Outdoor rec-fitness (1)

Public (1)

1. Public garden with benches and a fitness trail with indigenous plants identified
 - Flower garden with benches
2. Sculpture park with benches
3. Victory garden
4. Rotary park
5. Natural space – more trees, benches, places to bring a book you just took out at the library
 - Green Space
 - Green Space
 - Green space with benches
6. DeVos and VanAndel memorial park
 - Memorial Park to founders of Ada and the Devos's & VanAndel's.
7. Retail Property
8. Dog park
9. Outdoor rec area – Group Fitness
 - Fitness circuit
10. Retail: Founders East location
11. How about an access point to the trails system with parking and maps, picnic pavilions, info on North Country Trail
 - Trail head
12. Public, but not sure what

- 2. What recreational facilities and programs outside of Ada Township do you use? Include the locations, and the name or type of facility or program. If Ada Township had this facility or program, would you utilize it? Or would you continue to use the facility or program outside the Township?**

1. Seidman Park
2. Blandford Nature Center
3. Howard Christianson Nature Center
4. YMCA – yes, I would prefer a work out facility closer to home (In Ada)
 - YMCA
 - YMCA – Mary Free Bed

5. Peace Park
6. Shaggy Pines Dog Park – Yes
7. Aberdeen Park, Creston Neighborhood, out of convenience – No
8. Golf Courses
9. Belknap Lookout
10. Bike Trails
 - Biking
11. Parks
12. Splash pads
13. Group fitness (boot camp)
14. MVP on Crahen
15. Orange Theory on Beltline
16. Boating on Spring Lake
17. Cascade Bike Trails
18. Riverwalk
19. Running / bike paths GR & Cascade
20. Hiking
21. Kayaking
22. Camping at State and National parks
23. Cross country ski

3. Dream Big – What recreational facility do you wish could be built/provided here in Ada Township?

1. Outdoor amphitheater
 - Outdoor Concert hall
 - Outdoor concert shell for summer concerts
2. Children’s motor skills rec facility
3. Ice Arena
4. Golf
5. Disk golf
6. Community pool
7. Indoor jump space
8. Offer to build a headquarters for North Country Trail and market it as the biggest unit in the National Park system and we are near its center
9. Cross country skiing trails – groomed

4. Recreational Programming – Which programs do you use inside the Township, but wish could be expanded or improved how? Which programs not currently offered would use if they were offered in Ada Township?

1. Parks program for kids (canoeing)
2. Roselle Trails

ADA TOWNSHIP RECREATIONAL NEEDS ASSESSMENT 2018
WORKSHOP IN A BOX
Owls-11 Participants

**1. What is the best use of the property on the north side of Headley Street, south of Fulton Street?
List both public and private uses if you wish.**

- **Gardening, green space, trails (9)**

1. Free parking – especially for handicapped
2. Movies in the lawn
 - Movies in the lawn
 - Movies in the lawn
3. Gardening program for children
4. Hands on learning events
5. Thai Chi or exercise for seniors
6. Leave as is (green area)
 - I think it would be good to leave the space as it is. That was it can be a place for all kinds of events. I wouldn't like to see more apartments or buildings there.
 - Perhaps green space for now, after 2-3 years pass, when there's a specific need for property, it could be considered.
 - Leave it as it is – no apartments or businesses – enough of those
7. Special activities – one or two day events
8. Gardens with seating to enjoy the gardens
9. Walk way / Trails for bikes
10. Maybe walking paths for now
 - Maybe a walkway, greenery, drinking fountains
11. Outdoor yoga ie “yoga Nidra “Meditation”
12. Tables with checkers and chess – if tournaments were held, it could help bring people here
 - Use historical background for programs for children (focus on children, many grandparents have grandchildren visiting for the summer)
 - Ada historical display on what was located in this “Historic District”
13. Display area of history – native people
14. Love the town square with a fountain, shops surrounding – European style
15. Sell it and add to another property
16. Village activities
17. Farmers market
18. Art gallery next to ice cream shop
19. Concerts
20. Restrooms
21. Small playground
22. Fountain or splash pad with park benches
23. More parking spaces

2. What recreational facilities and programs outside of Ada Township do you use? Include the locations, and the name or type of facility or program. If Ada Township had this facility or program, would you utilize it? Or would you continue to use the facility or program outside the Township?

1. Cascade park – personal use, not for programs
2. Cascade Township exercise group – I would like more programs north, where I live
3. Cascade – newsletter listening tours, special events, music, luncheon events
4. Cascade library
 - Cascade library
 - Cascade library
 - Cascade library
 - Library Cascade – will probably continue to use that location
 - Cascade library
5. Bridge group at church and the Village of Ada
6. Tennis
 - Tennis
7. Golf
 - Golf
8. Pickle ball
9. MVP
 - MVP – on Burton for classes, free exercise, pool – If Ada owned, possibly
 - MVP – yoga and workout facilities
 - MVP for exercise
 - I go to MVP to exercise
 - MVP at Burton and Breton
 - MVP – Crahen – not sure if I would use it in Ada vs. Crahen
10. Music in Lowell – Ada facility needs to be changed or improved
11. John Ball Park Zoo
12. Concerts downtown
13. Theatre – Civic Center at Aquinas – yes, I would use close to home
14. Stratford, other cities and communities – I would still attend
15. Trip of seniors
16. Senior center for Tai Chi. I heard about places that offer line dancing
17. Welcome/ Visitors center at the library

3. Dream Big – What recreational facility do you wish could be built/provided here in Ada Township?

1. Welcome / visitors center
 - Visitors center
 - Visitors center at the library
2. Amway tours or museum
3. “Bridge walk” at the covered bridge
4. Pickle ball court
5. Par 3/9 nine hole golf course

6. Miniature golf courses
7. We need some Frisbee golf courses
8. Dancing classes
 - I would love to have a place to go line dancing – a building with a wood floor
 - Ballroom type dancing for adults
9. A center that would attract teens
10. Exercise session
 - Exercise center
 - Outside exercise
11. Learning Café close to where I live
12. Craft Groups
13. Amway art gallery
14. Juried art shows
15. Lectures health classes
16. Train station
17. Trolley and bus service
18. Outdoor swimming pool
 - Splash pad for children
 - Swimming pool – outside & inside
19. Music amphitheater
20. Theatre for plays, musicals (outdoor – low amount of work)
21. Flat bike path along the river for senior biking
22. Senior walkway / trails
23. Expand area on aging
24. Life-long learning opportunities
25. Meeting spaces for seniors with programs, exercise classes. Remember seniors in planning please!

4. Recreational Programming – Which programs do you use inside the Township, but wish could be expanded or improved how? Which programs not currently offered would use if they were offered in Ada Township?

1. Beers on the Bridge
2. Community building where cards can be played every day
3. The trail needs to be connected and, for older people, avoidance of the big hills (eg. Coming into or out of Ada on Ada Drive)
4. Exercise facilities
5. Exercise classes
6. Tai Chi – yoga classes
7. Farmer’s market
8. More programs, classes, meeting places for seniors needed in Ada
9. Exercise for seniors
10. Senior trips
11. Learning café
12. Welcome center on new park area

ADA TOWNSHIP RECREATIONAL NEEDS ASSESSMENT 2018

WORKSHOP IN A BOX

Adacraft Commons-11 Participants: (6 in Focus Group; 5 Individuals)

(high energy ideas are underlined)

1. **What is the best use of the property on the north side of Headley Street, south of Fulton Street? List both public and private uses if you wish. *High Energy ideas are underlined.***

- **Gardens, green space park area, walking trail (7)**
- **Recreational facility: chess, ice rink, basketball courts, dog park, splash pad, mini golf, archery range (6)**
- **Cultural: children's museum, art gallery, sculptures, art fair, amphitheater, small theatre (6)**
- **Farmers' market (2)**
- **Other: Indoor/outdoor gathering space, food trucks**

1. Gardens, native plants, trees
2. Consider community garden or flower gardens & perhaps water features to draw out some of the traffic noise
3. Some shaded sitting benches beneath shaded trees
4. Chess tables
 - Solid table (cement) with benches for chess or checkers, shaded with the boards designed for 2-3 games
5. Green Space
 - Leave it alone
 - Green spaces with benches, reading spots, gatherings
 - I'd prefer to keep it green. There are enough buildings that exist and are being built in the area.
6. Something that brings coziness and conciseness. With all the change, a building seems a bit disjointed right now.
7. Children's Museum
8. Art gallery and/or consignment for local artist
9. Shops and stores – I feel it might be too close to Fulton to have any kind of outdoor recreation center for families with children.
10. Good question, I need to see if Ada Village redesign makes good use of frontage along Thornapple river
11. Perhaps an ice rink on the water w/ lighting and warming area
 - Public use – skating rink area
 - Transition to skate rink for summer for older kids – Or basketball courts
12. Dog park
 - Dog park
13. Splash Pad
 - Outdoor play fountain – Splash Pad
 - Splash pad for children or adults, sculptures with children with umbrellas (Gene Kelly type-singing in the rain) with water coming from umbrellas and bellow in basin

14. Art fair in summer or fall
15. Indoor / Outdoor gathering space
16. A park with ample space (flat grass area) for large community gatherings (4th of July events like beer @ the bridge).
17. Outdoor adult & children's classes – eg. yoga
18. Maybe add paths through it, but minimal permanent features
 - Walking loop for exercise or just strolling
19. Farmers market/artist market
 - Open air covered farmers market like Fulton Street market
20. An amphitheater somewhere in Downtown would be nice for music etc.
21. Small theatre for local plays
22. Putt- Putt golf (Mini golf)
23. Food trucks
24. Archery range

2. What recreational facilities and programs outside of Ada Township do you use? Include the locations, and the name or type of facility or program. If Ada Township had this facility or program, would you utilize it? Or would you continue to use the facility or program outside the Township?

1. Millennial Park –**no**
2. YMCA (STEM camp, soccer, tennis, acting, art)
 - YMCA – Mary Free Bed – **no**
 - YMCA – Downtown –**no**
 - Mary Free Bed YMCA – soccer
3. Cascade Peace park hiking trails
4. Riverside Park NE Grand Rapids – walking, biking, rollerblading
5. East Grand Rapids – Parks and Rec
6. Basketball courts
7. Bicycle polo rink
8. White Pine Trail – biking/rollerblading
9. Mountain biking trails – Cannonsburg, Rockford, Hastings – **yes**
10. Running/ bike paths
 - Biking
 - Bike path – Ada Dr. Thornapple River Dr. Cascade Rd.
11. Cascade Township Park – playground
12. Cascade library
 - Cascade library
 - Library (Cascade) – hope to use Ada library instead – ruff readers, magicians, hula hoopers, pet rock making, summer reading
 - Cascade Township library (Looking forward to Ada's new library)
13. Meijer Gardens
 - Meijer Gardens
14. Grand Rapids Township park
15. Parks and walkways Downtown – **no**

16. Creekside park in Lowell
17. Grand Rapids Gymnastics (GRG)
18. Yoga
 - Yoga at Terra Firma – **yes**
19. Gym at GVSU - no
20. MVP pool
21. Rock climbing gym at Terra firma - **yes**
22. Pickeral Lake hiking trails
23. Canoeing livery – **yes, I would use it**
24. Kayaking
25. Hiking trails
26. Cross country skiing house – pigeon creek – groomed and marked at Roselle or somewhere else – this could include internships for high school and middle school students and volunteer hours
27. Various parks: state, county, other townships. I would probably still use them
28. Kids summer camps – Forest Hills community ed
29. Forest Hills PS classes – community ed
30. Forest Hills Park Association swim lessons
31. Cooking classes – Downtown Market
32. Outdoor summer movies – (An-Nab-Awen Park)
33. Civic Theatre
34. Aquinas College – Grand river Dr.
35. Art, Ford, and other museums downtown
36. KCAD

3. Dream Big – What recreational facility do you wish could be built/provided here in Ada Township?

1. Outdoor shell for plays
 - Amphitheater
2. Movie theater
3. Ninja warrior type grown up playground
 - Obstacle course like American Ninja Warrior style
 - Ninja warrior course at Ada Township Park
 - Improved playground at Ada Park – American Ninja Warrior type climbing obstacle course
4. Ropes/ climbing course
5. Outdoor bouldering (rock climbing) with real boulders, keep area natural looking with native plants & flowers. It would be beautiful and unique to the area.
6. Kayak course on the Thornapple River – Olympic Style
 - Kayak/Canoeing site for joining rivers
 - Boat (canoe/kayak launch)
7. Archery
8. Ice rink
9. Chess table
10. Permanent cement ping pong table
11. An affordable dance studio that offers dance classes for young children

12. Exercise stations along a curved path in or out of park
13. Local Ada theatre class
14. Library is coming, right?
15. Community Center
16. Outside play fountain
 - Splash pad
 - Splash pad
 - Beach lake for swimming / Public pool
 - Splash pad
17. Children's museum
18. Parks located so every kid could walk to one from their home – preferably without crossing any roads
19. A heated dome – areas for soccer fields, track for running and walking, all kinds of sports opportunities for children with Ada Township paying for sports programs for residents to use for free.
20. Dog park
 - Dog park
21. More bike paths for walking, biking, rollerblading
 - More bike trails / maintain existing trails
22. Mountain bike trails through the woods
23. Bike lanes on all Township roads
 - Bike lanes on the road
 - Bike lanes (on the road)

4. Recreational Programming – Which programs do you use inside the Township, but wish could be expanded or improved how? Which programs not currently offered would you use if they were offered in Ada Township?

1. Concerts
2. Beer on the Bridge
3. Ice skating at Leonard field – would be great to have a better dedicated space for this with place to warm up and put on skates.
4. Exercise stations along bike paths
5. None – would love outdoor yoga
6. Ada Township Park – better playground!
7. Park trails – more is always better
8. Roselle Trails
 - Roselle Park – More signage regarding wildflowers and trees
 - Signage at Roselle
9. Seidman Park – hiking needs signs and information!!!
10. The library!!!
11. Theatre group
12. Service learning opportunities for youth
13. Tennis courts – lessons for teens

14. Pickle ball courts – park lessons, adults
15. Community ed. lessons in Ada for adults for tennis and pickle ball
16. Love the kids' camps at Ada! My kids have done most of them. We would love the one time drop in classes (like offered for preschoolers now) for school aged kids during summer or Saturdays, and for the summer camps to change every couple years.
17. Summer internships for high schoolers – earn volunteer hours by coaching / teaching basic skills
18. *Camps/enrichment for kids and adults – more variety*
19. Adult hiking and community activities
20. Have a public open space within walking distance (4 blocks) of every kid, so they can go and do age appropriate stuff. Many parks vs. three large super parks.

ADA TOWNSHIP RECREATIONAL NEEDS ASSESSMENT 2018
WORKSHOP IN A BOX
Combined Results with Common Ideas Grouped

(High energy ideas are underlined)

- **What is the best use of the property on the north side of Headley Street, south of Fulton Street? List both public and private uses if you wish.**
 - Public garden with benches and a fitness trail with indigenous plants identified
 - Flower garden with benches
 - Gardens with seating to enjoy the gardens
 - Gardens, native plants, trees
 - Consider community garden or flower gardens & perhaps water features to draw out some of the traffic noise
 - Some shaded sitting benches beneath shaded trees
 - Victory garden
 - Gardening program for children
 - Hands on learning events
 - Small playground
 - Tables with checkers and chess – if tournaments were held, it could help bring people here
 - Chess tables
 - Solid table (cement) with benches for chess or checkers, shaded with the boards designed for 2-3 games
 - Use historical background for programs for children (focus on children, many grandparents have grandchildren visiting for the summer)
 - Public, but not sure what
 - Rotary park
 - Natural space – more trees, benches, places to bring a book you just took out at the library (II)
 - Green space with benches
 - Green Space
 - Green Space
 - Green Space
 - Leave as green area
 - I think it would be good to leave the space as it is. That was it can be a place for all kinds of events. I wouldn't like to see more apartments or buildings there. Greenery
 - Leave it as it is – no apartments or businesses – enough of those
 - Leave it alone
 - Perhaps green space for now, after 2-3 years pass, when there's a specific need for property, it could be considered.
 - Green spaces with benches, reading spots, gatherings
 - I'd prefer to keep it green. There are enough buildings that exist and are being built in the area.
 - Something that brings coziness and conciseness. With all the change, a building seems a bit disjointed right now.

- Memorial Park to Founders of Ada and the Devos's & VanAndel's.
- DeVos and VanAndel memorial park
- Ada historical display on what was located in this "Historic District"
 - Display area of history – native people
- Childrens Museum
- Retail Property
 - Retail: Founders East location
 - Art gallery next to ice cream shop
 - Art gallery and/or consignment for local artist
 - Love the town square with a fountain, shops surrounding – European style
 - Shops and stores – I feel it might be too close to Fulton to have any kind of outdoor recreation center for families with children.
- Good question, I need to see if Ada Village redesign makes good use of frontage along Thornapple river
- Perhaps an ice rink on the water w/ lighting and warming area
- Public use – skating rink area
- Transition to skate rink for summer for older kids – Or basketball courts
- Dog park
 - Dog park
 - Dog park
- Sculpture park with benches
- Fountain or splash pad with park benches
 - Splash Pad
 - Outdoor play fountain – Splash Pad
 - Splash pad for children or adults, sculptures with children with umbrellas (Gene Kelly type-singing in the rain) with water coming from umbrellas and bellow in basin
- Drinking fountains
- Special activities – one or two day events
- Art fair in summer or fall
- Indoor / Outdoor gathering space
- A park with ample space (flat grass area) for large community gatherings (4th of July events like beer @ the bridge).
- Outdoor rec area – Group Fitness
 - Fitness circuit
 - Thai Chi or exercise for seniors
 - Outdoor yoga ie "yoga Nidra "Meditation"
 - Outdoor adult & children's classes – eg. yoga
- How about an access point to the trails system with parking and maps, picnic pavilions, info on North Country Trail?
 - Trail head
- Walk way / Trails for bikes
 - Maybe a walkway
 - Maybe walking paths for now

- Maybe add paths through it, but minimal permanent features
- Walking loop for exercise or just strolling
- Free parking – especially for handicapped
- Farmers market
 - Farmers market/artist market
 - Open air covered farmers market like Fulton Street market
- Movies in the lawn
 - Movies in the lawn
 - Movies in the lawn
- Village activities
- Concerts
- An amphitheater somewhere in Downtown would be nice for music etc.
- Small theatre for local plays
- Restrooms
- Putt- Putt golf (Mini golf)
- Food trucks
- Archery range
- Sell it and add to another property
- More parking spaces
- **What recreational facilities and programs outside of Ada Township do you use? Include the locations, and the name or type of facility or program. If Ada Township had this facility or program, would you utilize it? Or would you continue to use the facility or program outside the Township?**
 - Seidman Park
 - Millennial Park –no
 - Blandford Nature Center
 - Howard Christianson Nature Center
 - YMCA – yes, I would prefer a work out facility closer to home (In Ada)
 - YMCA
 - YMCA (STEM camp, soccer, tennis, acting, art)
 - YMCA – Mary Free Bed
 - YMCA – Mary Free Bed – no
 - YMCA – Downtown –no
 - Mary Free Bed YMCA – soccer
 - Peace Park
 - Cascade Peace park hiking trails
 - Shaggy Pines Dog Park – Yes
 - Aberdeen Park, Creston Neighborhood, out of convenience – No
 - Riverside Park NE Grand Rapids – walking, biking, rollerblading
 - Belknap Lookout
 - East Grand Rapids – Parks and Rec
 - Basketball courts
 - Golf Courses
 - Golf

- Golf
- Tennis
 - Tennis
- Pickle ball
- Bicycle polo rink
- White Pine Trail – biking/rollerblading
- Mountain biking trails – Cannonsburg, Rockford, Hastings – yes
- Running/ bike paths – GR & Cascade
- Bike Trails
- Biking
- Biking
- Bike path – Ada Dr. Thornapple River Dr. Cascade Rd.
- Cascade Bike Trails
- Cascade – newsletter listening tours, special events, music, luncheon events
- Cascade park – personal use, not for programs
- Cascade Township Park – playground
- Cascade Township exercise group – I would like more programs north, where I live
- Cascade library
 - Cascade library
 - Cascade library
 - Cascade library
 - Cascade library
 - Cascade library
 - Library Cascade – will probably continue to use that location
 - Library (Cascade) – hope to use Ada library instead – ruff readers, magicians, hula hoopers, pet rock making, summer reading
 - Cascade Township library (Looking forward to Ada’s new library)
- Parks
- Meijer Gardens
 - Meijer Gardens
- Grand Rapids Township park
- Riverwalk
- Parks and walkways Downtown – no
- Creekside park in Lowell
- Splash pads
- Grand Rapids Gymnastics (GRG)
- Yoga
- Yoga at Terra Firma – yes
- Gym at GVSU - no
- Group fitness (boot camp)
- MVP on Crahen
 - MVP
 - MVP – yoga and workout facilities

- MVP for exercise
- MVP – on Burton for classes, free exercise, pool – If Ada owned, possibly
- I go to MVP to exercise
- MVP – Crahen
- MVP at Burton and Breton
- MVP pool
- Orange Theory on Beltline
- Rock climbing gym at Terra firma - yes
- Boating on Spring Lake
- Pickeral Lake hiking trails
- Canoeing livery – yes, I would use it
- Kayaking
- Kayaking
- Hiking
- Hiking trails
- Cross country ski
 - Cross country skiing house – pigeon creek – groomed and marked at Roselle or somewhere else – this could include internships for high school and middle school students and volunteer hours
- Camping at State and National parks
- Various parks: state, county, other townships. I would probably still use them
- Bridge group at church and the Village of Ada
- Kids summer camps – Forest Hills community ed
- Forest Hills PS classes – community ed
- Forest Hills Park Association swim lessons
- Trip of seniors
- Senior center for Tai Chi. I heard about places that offer line dancing
- Cooking classes – Downtown Market
- Outdoor summer movies – (An-Nab-Awen Park)
- Concerts downtown
- Civic Theatre
- Theatre – Civic Center at Aquinas – yes, I would use close to home
- Aquinas College – Grand river Dr.
- Music in Lowell – Ada facility needs to be changed or improved
- Art, Ford, and other museums downtown
- John Ball Park Zoo
- KCAD
- **Dream Big – What recreational facility do you wish could be built/provided here in Ada Township?**
 - Outdoor amphitheater
 - Outdoor Concert hall
 - Outdoor shell for summer concerts
 - Music amphitheater
 - Theatre for plays, musicals (outdoor – low amount of work)

- Community Theatre
- Outdoor shell for plays
- Amphitheater
- Theater
- Movie theater
- Ice Arena
 - Ice Rink
- Cross country skiing trails – groomed
- Walk way / trails
- “Bridge walk” at the covered bridge
- Flat bike path along the river for senior biking
- Ninja warrior type grown up playground
- Obstacle course like American Ninja Warrior style
- Ninja warrior course at Ada Township Park
- Ropes/ climbing course
- Outdoor bouldering (rock climbing) with real boulders, keep area natural looking with native plants & flowers. It would be beautiful and unique to the area.
- Kayak course on the Thornapple River – Olympic Style
- Kayak/Canoeing site for joining rivers
- Boat (canoe/kayak launch)
- Archery
- Pickle ball court
- Chess table
- Permanent cement ping pong table
- Golf
 - Par 3/9 nine hole golf course
 - Miniature golf course
- Disk golf
 - We need some Frisbee golf courses
- Dancing classes
 - I would love to have a place to go line dancing – a building with a wood floor
 - Ballroom type dancing for adults
 - An affordable dance studio that offers dance classes for young children
- Exercise session
 - Exercise programs
 - Exercise center
 - Outside exercise
 - Exercise stations along a curved path in or out of park
- Craft Groups
- Juried art shows
- Lecture health classes
- Classroom space for community ed
- Local Ada theatre class

- Learning Café close to where I live
- Life-long learning opportunities
- Expand area on aging
- Meeting spaces for seniors with programs, exercise classes. Remember seniors in planning please!
- Library is coming, right?
- Community Center
- Community pool
 - Outdoor swimming pool
 - Swimming pool – outside & inside
 - Splash pad for children
 - Outside play fountain
 - Splash pad
 - Splash pad
 - Beach lake for swimming / Public pool
 - Splash pad
- Children’s motor skills rec facility
- Children’s museum
- Improved playground at Ada Park – American Ninja Warrior type climbing obstacle course
- Parks located so every kid could walk to one from their home – preferably without crossing any roads
- Indoor jump space
- A center that would attract teens
- A heated dome – areas for soccer fields, track for running and walking, all kinds of sports opportunities for children with Ada Township paying for sports programs for residents to use for free.
- Dog park
 - Dog park
- Welcome / visitors center
 - Visitors center
 - Visitors center at the library
 - Welcome/ Visitors center at the library
- Offer to build a headquarters for North Country Trail and market it as the biggest unit in the National Park system and we are near its center
- Amway tours or museum
- Amway art gallery
- More bike paths for walking, biking, rollerblading
- More bike trails / maintain existing trails
- Mountain bike trails through the woods
- Bike lanes on all Township roads
- Bike lanes on the road
- Bike lanes (on the road)
- Trolley and bus service
- Train station

- **Recreational Programming – Which programs do you use inside the Township, but wish could be expanded or improved how? Which programs not currently offered would use if they were offered in Ada Township?**
 - Concerts
 - Beer on the Bridge
 - Beer on the Bridge
 - Ice skating at Leonard field – would be great to have a better dedicated space for this with place to warm up and put on skates.
 - Parks program for kids (canoeing)
 - Exercise stations along bike paths
 - Exercise facilities
 - Exercise programs
 - Exercise classes
 - Exercise for seniors
 - None – would love outdoor yoga
 - Tai Chi – yoga classes
 - Ada Township park – better playground!
 - Park trails – more is always better
 - Roselle Trails
 - Roselle Park – More signage regarding wildflowers and trees
 - Signage at Roselle
 - Seidman Park – hiking needs signs and information!!!
 - Farmer’s market
 - The library!!!
 - Community building where cards can be played every day
 - Learning café
 - Welcome center on new park area
 - Theatre group
 - Senior trips
 - More programs, classes, meeting places for seniors needed in Ada
 - Service learning opportunities for youth
 - Tennis courts – lessons for teens
 - Pickle ball courts – park lessons, adults
 - Community ed. lessons in Ada for adults for tennis and pickle ball
 - Love the kids’ camps at Ada! My kids have done most of them. We would love the one time drop in classes (like offered for preschoolers now) for school aged kids during summer or Saturdays, and for the summer camps to change every couple years.
 - Summer internships for high schoolers – earn volunteer hours by coaching / teaching basic skills
 - Camps/ enrichment for kids and adults – more variety
 - Adult hiking and community activities
 - The trail needs to be connected and, for older people, avoidance of the big hills (eg. Coming into or out of Ada on Ada Drive)

REFERENCES

Ada Township 2017 Parks, Recreation and Land Preservation Plan

Ada Township Parks, Recreation and Land Preservation Advisory Board

A Look at Trends in Parks & Recreation

Recreation Management Magazine, June 2018. <http://recmanagement.com/feature/201806FE04>

Kent County Draft 2019-2023 Parks, Trails and Natural Areas Master Plan

<https://www.kentcountyparks.org/info/2019-2023MasterPlan.php>

National Fitness Campaign

<https://nationalfitnesscampaign.com/cities/>

New Dog Park In Cascade Township Offers Safe Way for Pets to Exercise and Socialize

Cascade Hospital for Animals, June 5, 2016. <https://chfa.net/news/65-cascade-hospital-for-animals-dog-park>

2017 Outdoor Participation Report

The Outdoor Foundation. https://outdoorindustry.org/wp-content/uploads/2017/05/2017-Outdoor-Recreation-Participation-Report_FINAL.pdf

2018 NRPA Agency Performance Review - Parks and Recreation Agency Performance Benchmarks

National Parks and Recreation Association. <https://www.nrpa.org/siteassets/nrpa-agency-performance-review.pdf>