



TOWNSHIP

RECREATION FACILITIES AND PROGRAMS NEEDS ASSESSMENT

NOVEMBER 2018



RJM DESIGN

Land Planning • Landscape Architecture

Prepared By:

RJM Design, Inc.
1971 East Beltline NE, Suite 217
Grand Rapids, MI 49525
<http://www.rjm-design.com/>



MainStreet Planning Company
1600 East Beltline Suite 212
Grand Rapids, MI 49525
<https://www.mainstreetplanningco.com/>



TOWNSHIP

Prepared For:

Ada Township
Ada Township Hall
P.O. Box 370, 7330 Thornapple Rive Dr., Ada, MI 49301
<http://adamichigan.org/township/departments/parks-recreation>

ACKNOWLEDGMENTS

TOWNSHIP PARKS, RECREATION AND LAND PRESERVATION ADVISORY BOARD

Township Board Members

George Haga, Township Supervisor

Catherine Jacobs, Township Trustee

Paul LeBlanc, Township Trustee

Township Staff

James Ferro, Township Planning Director

Mark Fitzpatrick, Township Parks & Recreation Director

Rob McCormick, Recreation Director

Citizen Members

Betty Jo Crosby

Randy Damstra

Wayne Nowak

Elise Roe

Kraig Schmottlach

Rick Steketee

Mike Terwilliger

Jeff VandenBerge





TABLE OF CONTENTS

ACKNOWLEDGMENTS

- 01 INTRODUCTION
- 02 REVIEW OF EXISTING MATERIALS
- 03 REVIEW OF NATIONAL METRICS
- 04 REVIEW OF NEIGHBORING COMMUNITIES
- 05 STAKEHOLDER ENGAGEMENT
- 06 RECOMMENDATIONS
- 07 SUMMARY OF KEY FINDINGS

APPENDICES

- A FACILITIES DISTRIBUTION MAP
- B ADA TOWNSHIP RECREATION FACILITIES INVENTORY
- C RECREATION FACILITIES MATRIX
- D NEIGHBORING COMMUNITIES INVENTORY
- E COMMUNITY REMARKS© RESULTS
- F LEADERSHIP WORKSHOP CAFE RESULTS
- G WORKSHOP IN A BOX RESULTS

01 INTRODUCTION

PURPOSE OF THE RECREATION NEEDS ASSESSMENT

The Ada Township Recreation Needs Assessment incorporates an analysis of Township-owned and regional recreation facilities and recreation/education programs. The goal of the Assessment is to provide Ada Township with recommendations for the development of new parks, the addition of recreation amenities in existing Township parks, and a guide for planning future recreation programs and support services.

ADA TOWNSHIP PARKS & RECREATION DEPARTMENT MISSION

The mission of the Ada Township Parks & Recreation Department is to provide all community members with diverse recreational opportunities including access to premier natural, historical and cultural areas that enhance their quality of life and inspire the preservation of nature.

ADA TOWNSHIP PARKS & RECREATION DEPARTMENT OVERVIEW

The Parks & Recreation Department is responsible for managing operations of the Township's parks, preserves, trails, and recreation programs. This includes four community parks and eight preserves that comprise 500 acres of recreation opportunities. The location of these recreation facilities is shown in the **APPENDIX A: FACILITIES DISTRIBUTION MAP**.

RECREATION NEEDS ASSESSMENT APPROACH

The Assessment was guided by the RJM Design and MainStreet Planning Co consultant team in collaboration with the Township Parks, Recreation and Land Preservation Advisory Board and community input. The Assessment included the following tasks:

Review of Existing Plans, Studies, and Surveys

A review of existing plans, studies, and surveys relevant to the assessment including: Ada Township 2017 Parks, Recreation and Land Preservation Community Recreation Plan; 2013 Envision Ada plans; recent community surveys, park master plans, and accessibility review; listings of current recreation programs and facilities; and Kent County Park, Trails and Natural Areas Master Plan 2019-2023 Draft. The above materials were reviewed to establish a baseline of current conditions and planning in place in Ada Township.

Review of National Metrics, Standards, and Trends

A review of national recreation metrics and standards to develop a summary of case studies and best practices for recreation facilities, amenities, programs, and services.

Review of Neighboring Communities

The Assessment includes a review of recreation facilities, amenities, programs, and services available in neighboring communities to establish a benchmark of regional standards and regional recreation offerings available to Ada residents.

Stakeholder Engagement

The Assessment employed the following three forms of stakeholder engagement:

- Community Remarks®, a map-based public engagement portal that allows interested persons to submit comments related to specific sites or geographic areas, and to view and vote on other user-submitted comments.
- Leadership Workshop Café, an invitation-only event where community leaders were asked to provide comments on eight topics relating to parks and recreation programs and amenities in Ada Township; recreational facilities used outside the Township; and on roadblocks or problems in providing recreation or access to recreation in Ada Township.
- Workshop-in-a-Box, a self-guided input method completed by three civic groups representing a cross-section of the population of Ada Township.

02 REVIEW OF EXISTING MATERIALS

The assessment includes a review of relevant existing plans, studies and surveys to establish a baseline of current conditions and planning in place in the Township. Documents for this review were supplied by Ada Township Parks and Recreation department and included: **2017 Parks, Recreation and Land Preservation Plan; the Envision Ada 2013 plans, recent community surveys, park master plans, recent accessibility review and listings of current recreation programs and facilities.**

Based on the review of existing materials the following general comments were noted:

- The Township has both urban and rural characteristics. Three-quarters of the Township north and east of the Grand River is still predominantly rural. This is reflected in the location of the Township's recreation properties and the amenities they offer.
- The Township offers a variety of recreation opportunities. Leonard Field Park, Ada Township Park, Roselle Park, and Settlers Grove Riverside Park are developed with facilities such as playgrounds, ballfields, and tennis courts that facilitate more structured recreation. Township open space and preserves are less developed with no improvements or minimal improvements such as trails or gravel paths.
- Attractive natural character remains a preeminent goal for the Township's future.
- Ada's population has a general aging trend. Median population age has increased from 23 to 40 from 1970 to 2010. Providing programs and facilities for seniors is a growing trend.
- Family friendly programs such as Beers at the Bridge, a partnership between the Township and Ada Historical Society, have been very popular.
- According to 2015 U.S. Census estimates, of a total of 13,807 persons in Ada Township, 4.2%, or 581 persons, have a disability. What facilities exist for differing abilities? Providing recreation facilities and programming for those with disabilities is a recreation trend. Of the surrounding communities, our research found that Kentwood was the only one to specifically include recreation activities for those with disabilities.

ADA TOWNSHIP RECREATION PROPERTIES REVIEW

In reviewing the existing materials, the first step was to outline and update the inventory of recreation facilities located within Ada Township. The complete chart, found in **APPENDIX B: ADA TOWNSHIP RECREATION FACILITIES INVENTORY** lists recreation facilities in Ada Township and the associated amenities they offer. Programs offered at the properties, by Ada Township Parks and Recreation or Third-Parties, have been included to aid in cross-referencing. Third-Parties include all entities other than Ada Township that provide recreation programming.

The chart was compiled with information gathered from section "V. Inventory of Existing Parks, Natural Areas and Recreation Facilities" of the Township's *2017 Parks, Recreation and Land Preservation Plan*, review of Kent County's Parks, Trails and Natural Areas Master Plan, review of the Township Parks & Recreation Department website and seasonal flier, and communication directly with the Township Parks & Recreation Department. The acreage for these parks was first gathered through the means listed above and confirmed or updated with Kent County Parcel Viewer and GIS mapping.

Ada Township Parks and Recreation Department owns and manages 4 parks and 8 open space preserves comprising 500 acres. Including schools, County, State, and Federal properties, the Township contains over 1,000 acres of public land offering residents a variety of recreation options.

Property Review Highlights

The following are the major updates to park facilities within Ada Township that have occurred since the *2017 Parks, Recreation and Land Preservation Plan* inventory of existing parks, natural areas and recreation facilities.

Ada Township Park

During the spring and summer of 2018 the tennis courts at Ada Township Park were renovated. The front four tennis courts were renovated and remained as four tennis courts. The back two courts were converted into six pickle ball courts to meet community demand.

Settlers Grove Riverside Park

Settlers Grove Riverside Park is located on the Thornapple River. In 2017 the 3-acre park site was combined with Thornapple Confluence Preserve expanding the park property to approximately 19 acres. Construction of Settlers Grove Riverside Park is anticipated to finish in the spring of 2019. Park amenities include a playground, restrooms, paved paths, benches and trees, a deck/stage and the privately operated Ada Village General Store. This park is a component of Envision Ada 2013. The Township plans to partner with the General Store for programs held in the park.

Chief Hazy Cloud Park

In 2017 Kent County, with support from Ada Township, initiated the purchase of 125 acres adjoining Chief Hazy Cloud Park. This addition will increase the parks size to nearly 400 acres with over three miles of frontage on the Grand River. This expansion is across the river from Roselle Park, making a planned bridge and trail connection over the river, between the two parks possible. Kent County is in the process of updating their Parks, Trails, and Natural Areas Master Plan which includes a Preliminary Master Plan for the expanded Chief Hazy Cloud Park. Envisioned long-term improvements include development of trails and parking to improve park and river access. Trails include 12' wide multi-purpose, boardwalk, equestrian, and nature. A large part of the park is lowland with seasonal flooding which limits amenities that can be added to the park.

Pettis Avenue Parcel, owned by the Township, is surrounded by Chief Hazy Cloud Park. Consideration is being given to incorporate this 3-acre parcel into Chief Hazy Cloud Park.



Construction progress at Settlers Grove Riverside Park
Photo courtesy of Ada Village



Newly constructed playground at Ada Settlers Grove Riverside Park.
Photo courtesy of Ada Village



Newly constructed pickle ball courts at Ada Township Park.
Photo courtesy of Ada Village

ADA TOWNSHIP RECREATION PROGRAMS REVIEW

Recreation programs available to Ada Township residents include those administered and provided by Ada Township Parks & Recreation Department through career staff, seasonal staff, contract instructors, or trained volunteers; those administered by third-party organizations at Township facilities requiring Township facility rental and Township Parks and Recreation staff; and those administered by third-party organizations at private or school facilities. Third-Parties include all entities other than Ada Township that provide recreation programming. All programs are divided into the following seven (7) categories:

- 1) **Team Sports**
- 2) **Athletics and Fitness**
- 3) **Family Friendly**
- 4) **Youth Programs**
- 5) **Adult Programs**
- 6) **Themed Special Events**
- 7) **Volunteer**

These categories were developed by streamlining the Township Parks and Recreation Department’s existing program categories. Organized by the categories listed above, the charts below outline all programs, regardless of provider, available to Ada residents. The list of programs was developed through the Township Parks & Recreation Department website and seasonal flier, communication directly with the Township Parks & Recreation Department, and third-party provider websites. Programs are identified as being provided:

- 1) **Solely by Ada Township Parks and Recreation Department**
- 2) **By a third-party using Ada Township facilities**
- 3) **Solely by a third-party at a private facility.**

This differentiation is made to gain an understanding of how the community’s recreation programming needs are currently met. When cross-referenced with feedback received from stakeholder engagement, this provides the opportunity to see where gaps exist and how the demand can be met either by the Township Parks and Recreation Department or through partnership with third-party providers.

TEAM SPORTS PROGRAMS			
Program	Ada Township Parks and Recreation Dept.	Ada Township Facility/ Third-Party	Third-Party
High School Girls Fast Pitch	✓		
Men’s Slow Pitch	✓		
Coed Softball	✓		
Men’s Fast Pitch	✓		
Ultimate Frisbee		✓ Facility Rental	
AYSO Youth Soccer		✓ Facility Rental	
Instructional League Baseball			✓
Youth League Baseball			✓
Rookie League Baseball			✓
Minor League Baseball			✓
Major League Baseball			✓
Senior League Baseball (age 13-15)			✓
Shooting League			✓
Youth Football			✓

ATHLETICS AND FITNESS PROGRAMS			
Program	Ada Township Parks and Recreation Dept.	Ada Township Facility/ Third-Party	Third-Party
Grand Rapids Triathlon		✓ Facility Host	
Tennis		✓ Facility Rental & Instruction	
Pickle ball		✓ Facility Rental & Instruction	
Yoga		✓ Facility Rental & Instruction	
School-age kids shooting program			✓
Private Shooting Lessons			✓
Golf			✓
Horse Riding Lessons			✓
Equestrian Shows			✓
Forest Hills Aquatic Center Classes			✓
FAMILY FRIENDLY PROGRAMS			
Education	✓		
Adventure Outings	✓		
Kids' Garden	✓		
Tuesdays on the Lawn Concerts		✓ Ada Historical Society	
Beers at the Bridge Concerts		✓ Ada Historical Society	
YOUTH PROGRAMS			
Day Camps	✓		
½ Day Programs	✓		
Discovery Preschool	✓		
Adventure Outings	✓		
Kids' Garden	✓		
School Programs	✓		
Forest Hills Youth Enrichment Programs			✓
ADULT PROGRAMS			
Step It Up!	✓		
Community Education	✓	✓	
Forest Hills Adult Education Classes			✓
Forest Hills Senior Programs			✓
THEMED SPECIAL EVENTS PROGRAMS			
4 th of July Festival		✓ Township	
Ada Children's Fair		✓ Ada Business Association	
Santa Parade		✓ Ada Business Association	
VOLUNTEER PROGRAMS			
Boards & Committees	✓		
Stewardship Work Days	✓		
River Clean-Up Day	✓		
School & Scout Groups	✓		
Teen (Junior Counselor)	✓		

Summary of Ada Township 2017 Programs

The chart below outlines programs offered by Ada Township during 2017. This information was received from the Ada Township Parks and Recreation Department. Because their budget is separate from the Township Parks and Recreation Department, Themed Special Events are not included in the table below.

2017 Ada Township Recreation Parks and Recreation Programs				
	# of Events	Total Participants	Total Teams	Total Revenue
Softball/Baseball Leagues	8	1,448	99	\$35,541
Softball/Baseball Tournaments	5	1,020	106	\$4,819
Youth Programs	24	365	NA	\$11,035
Adult/Family Programs	7	355	NA	\$1,201
School Groups	19	1370	NA	\$1,788
Stewardship (Volunteers)	20	336	NA	NA
Program Totals	64	2,101	75	\$54,384
2017 Facility Rentals	116			\$6,740
2017 Totals	180			\$61,124

Softball/baseball and Youth Programs are the major programs offered by the Township Parks and Recreation Department.

Softball/Baseball

The softball/baseball season typically starts at the end of March and runs through the end of September. Over the last 10 years the number of softball/baseball games increased, with the highest number being in 2015. Over the last two years numbers have slightly decreased. It is not known why there has been a decrease, however, other regional agencies have noted a decline in softball. Softball/baseball did not feature in any stakeholder engagement comments, positive or negative.

Youth Programs

During 2017 Ada Township Parks and Recreation Department held 24 youth programs with a total of 365 participants. Age specific programs included: Discovery Days (ages 3-5 w/parent), Young Explorers (ages 5-7), Junior Naturalists (ages 8-11), Outdoor Adventurers (ages 10-13), Summer Day Camps (ages 6-11). Open programs included Kids Garden and Bike Decorating. The table below outlines participation per program. Young Explorers, Summer Day Camps, and Bike Decorating were the most well attended.

2017 Ada Township Youth Programs			
Program	# of Events	Total Participants	Average # Participants/Event
Discovery Days (ages 3-5 w/parent)	9	78	9
Young Explorers (ages 5-7)	3	63	21
Junior Naturalist (ages 8-11)	3	28	9
Outdoor Adventurers (ages 10-13)	2	13	7
Summer Day Camps (ages 6-11)	5	121	24
Kids Garden	1	8	8
Bike Decorating	1	54	54

Recreation Program Partnerships

The Township Parks and Recreation Department contracts organizations and resource specialists to enhance youth programs. Partner organizations include Blandford Nature Center, AAA Canoes, Averill Historical Museum staff and volunteers. Individual resource specialist partners include art teachers, soccer coaches, and naturalists. These partnerships are a valuable resource in both supplementing and enhancing what the Township offers its residents

PUBLIC OPINION SURVEY - 2017 RESULTS REVIEW

The Review of Existing Plans, Studies, and Surveys included gaining an understanding of the *2017 Parks, Recreation and Land Preservation Plan Public Opinion Survey*. This is the most recent recreation-focused survey completed for the Township and was conducted by Ada Township Parks and Recreation electronically through email and Township website and Facebook posts.

The results, included in the *2017 Parks, Recreation and Land Preservation Plan* appendix, informed the development of goals, objectives, and action program included in the Plan. For this Recreation Needs Assessment, the *2017 Parks, Recreation and Land Preservation Plan Public Opinion Survey* results were reviewed to inform questions posed during Stakeholder Engagement. The intention was to identify topic areas of stakeholder input not previously gathered by the Township and to identify topic areas that had been identified by the Township but needed further expansion. Review of the *2017 Parks, Recreation and Land Preservation Plan Public Opinion Survey* results generated the following topic areas:

- Best use of public green space on north side of Headley Street
- Recreation Facilities and Programs used outside of Ada Township
- Dream Big-Desired Recreation Facilities inside Ada Township
- Quantity of green space in Ada Township
- New Park and Playground Needs
- Improvements to Existing Recreation Facilities in Ada Township
- Roadblocks/problems to Providing Recreation Opportunities in Ada Township
- Recreation Program Needs

Using the topic areas above, specific stakeholder questions were developed. This is further outlined in **SECTION 05 STAKEHOLDER ENGAGEMENT** of this report.

ENVISION ADA 2013 REVIEW

Headley Commons

Recommendations from Envision Ada 2013 resulted in a revised alignment of Headley Street delineating open space initially conceptualized as a formal green amenitized by a civic building. Ada Township's *2017 Parks, Recreation and Land Preservation Plan* included concepts plans for the Headley Commons site with potential amenities including retention of the open area for large community activities, a facility to house a farmer's market, a community building, potential library, an ice rink, and a community and/or kids garden.

In October 2017, the Township Board decided to move forward locating a community center/library on the south side of Headley Street from Headley Commons. The Amy Van Andel Library and Community Center will be a new branch of the Kent District Library (KDL) system. In addition to the library component, the center will offer a variety of flexible multi-purpose spaces for community meetings including; small study rooms, conference rooms and meeting rooms for groups ranging from 2 persons to 160 persons.

The Concept Plan for Headley Commons should be updated based on the new location of the library/community center and public input received during this assessment. Public input regarding the Headley Street property is further outlined in the Stakeholder Engagement section of this report.

03 REVIEW OF NATIONAL METRICS

This assessment includes a review of national recreation metrics and standards as presented in the National Park and Recreation Association's (NRPA) *2018 NRPA Agency Performance Review*. This annual report seeks to provide park and recreation professionals with a benchmarking tool to assist with effective management of resources and facilities. The data and insights in the 2018 Review were collected through an NRPA Agency Performance Survey of 1,069 park and recreation agencies.

The following outlines how Ada Township compares with other similar-sized communities and provides a starting point for the development of recreation facility and program goals that meet the unique needs and demands of the Township's residents.

Comparisons were made using the United States Census Bureau's 2010 Population Census and 2017 Population Estimate for Ada Township. Inclusion of the 2017 Population Estimate provides a more accurate picture of current conditions with the 2010 Population Census as a known baseline.

Ada Township Population

2010 Population Census: 13,142

2017 Population Estimate: 14,528

Ada Township Recreation Facilities

The parks listed are facilities owned and operated by Ada Township. There are eleven (11) facilities in total comprising 500 acres. This information was gathered beginning with the "Recreation Inventory" component of the Township's *2017 Parks, Recreation and Land Preservation Plan*. The list was updated through review of the Township Parks & Recreation Department website and seasonal flier, and communication directly with the Township Parks & Recreation Department.

Township Parks and Preserves

1. Ada Township Park
2. Leonard Field Park & Ada Covered Bridge
3. Roselle Park
4. Settlers Grove Riverfront Park
5. Carl Creek Crossings Preserve
6. Carl Creek Wetlands Preserve
7. Grand River Nature Area & Preserve
8. Grand River View Preserve
9. Knapp Corner Preserve
10. Grand River-Fulton Street Preserve
11. Pettis Avenue Parcel
12. Shady Drive Preserve

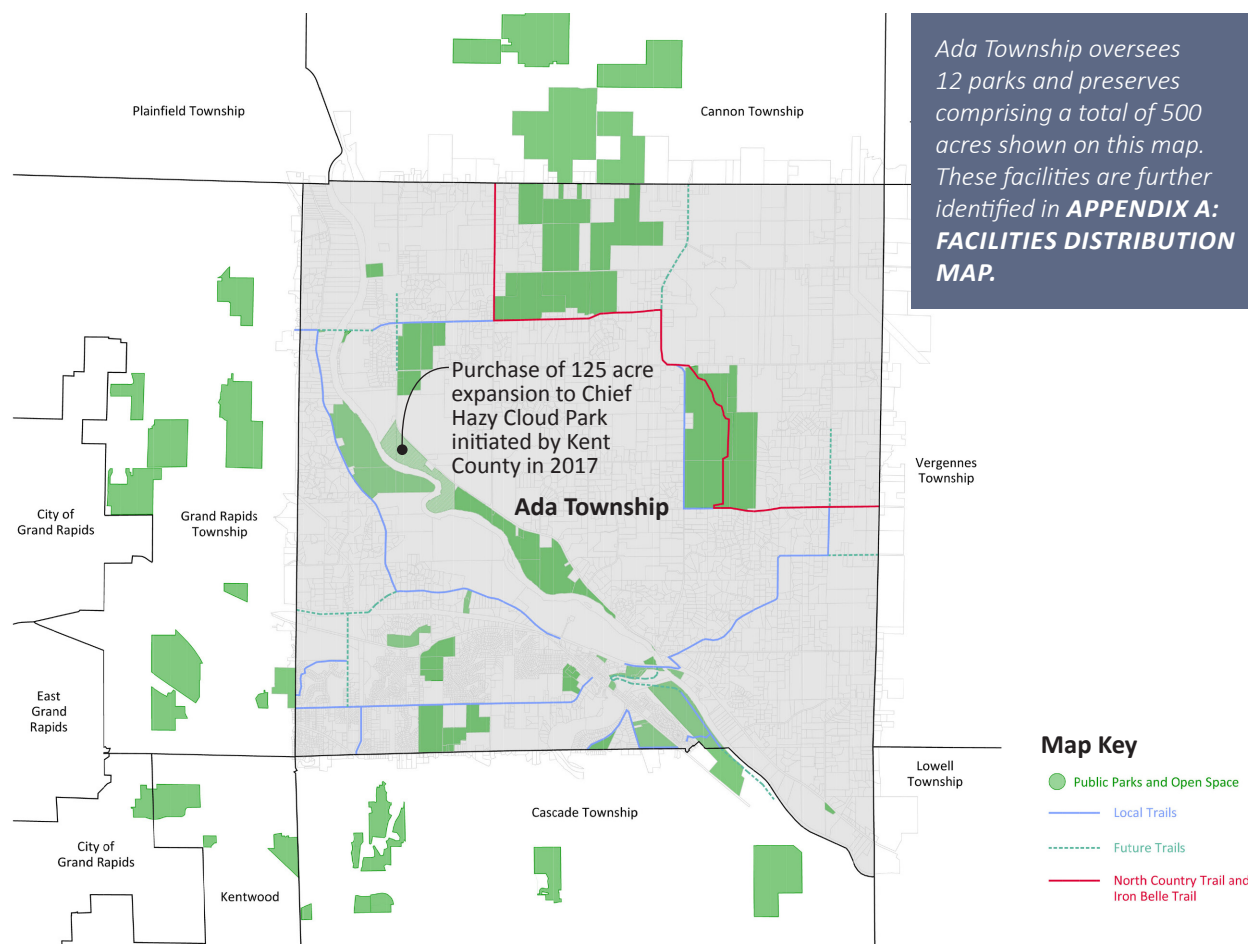
RECREATION FACILITIES COMPARISON

The typical agency has 18 parks comprising a total of 413 acres under its watch. Ada Township oversees 12 parks and preserves comprising a total of 500 acres. While the number of parks under the Township ownership is less than the typical similar-sized agency, the total acreage of parks is well above the average. This indicates that the Township has sufficient acreage but it is concentrated in larger parks and may not be evenly distributed throughout the community. This is demonstrated in the Recreation Facilities Map below. The expansion of Chief Hazy Cloud Park and the expansion of existing trails will assist with even distribution and access throughout the Township.

Residents per Park (Ada Township Parks)		
NRPA Less than 20,000 Population	Ada Township 2010	Ada Township 2017 Estimate
1,318	1,195	1,321

According to the NRPA 2018 Agency Performance Review, the smallest agencies, those serving fewer than 20,000 residents, typically have 10.8 acres per 1,000 residents. Ada Township oversees 500 acres of park land or 38.8 acres per 1,000 residents. Ada Township exceeds the average for jurisdictions with fewer than 20,000 residents by approximately 28 acres per 1,000.

Acres of Park Land per 1,000 Residents (Ada Township Parks)		
NRPA Less than 20,000 Population	Ada Township 2010	Ada Township 2017 Estimate
10.8	38.5	35.7



Recreation Agency Facility Amenities

The table below groups communities by density (residents per square mile). These groups are: less than 500; 500 to 1,500; 1,500 to 2,500; more than 2,500 residents per square mile. Per the United Census Bureau, Ada Township land area is 36 square miles and its population density is 365 people per square mile. This places the Township in the NRPA's comparative category of agencies with a population density of less than 500 people per square mile.

The facilities in the table are listed in descending order from most prevalently to least prevalently offered by park and recreation agencies. A majority of agencies provide playgrounds and basketball courts. Ada Township Parks and Recreation facilities largely feature passive recreation opportunities aside from Leonard Field Park, Ada Township Park, Roselle Park, and Settlers Grove Riverside Park. Recreation facilities managed by other entities generally make up the difference. This is demonstrated by the two right columns that include facilities within Ada Township managed by entities other than the Township. This includes Kent County, State of Michigan Department of Natural Resources, schools, and private providers.

Including all public and private facilities, Ada Township generally provides sufficient resident-to-facility ratio in comparison to similarly dense communities. A dog park is the only facility not found in Ada Township that is found in a majority (50% or more) of similarly dense communities. These comparisons in conjunction with stakeholder engagement informed recommendations found in the Recreation Facilities and Program Recommendations portion of this report. The complete matrix of facilities and their related amenities can be found in **APPENDIX C: RECREATION FACILITIES MATRIX.**

Outdoor Parks and Recreation Facilities - Number of Residents per Facility					
	% of Agencies	NRPA Less than 500	Ada Township 2010	Including Other Entities 2010	Including Other Entities 2017
Playgrounds	92	6,132	4,381	1,314	1,453
Basketball Courts	83	7,869	13,142	4,381	4,843
Tennis Courts (outdoor only)	77	5,462	3,286	526	581
Diamond fields: baseball- youth	75	6,628	4,381	1,643	1,816
Diamond fields: softball- adult	66	10,957	4,381	1,877	2,075
Rectangular fields: multi-purpose	63	9,043	6,571	2,628	2,906
Diamond fields: softball- youth	59	10,495	4,381	1,877	2,075
Diamond fields: baseball- adult	55	15,000	4,381	1,877	2,075
Dog Park	55	51,804	0	0	0
Swimming Pools (outdoor only)	52	42,344	0	13,142	14,528
Totlots	47	19,766	0	13,142	14,528
Rectangular fields: soccer field- youth	47	5,584	0	1,643	1,816
Community Garden	46	37,571	0	0	0
Rectangular fields: soccer field- adult	42	10,250	13,142	1,877	2,075
Multi-use courts- basketball, volleyball	38	12,757	13,142	1,877	2,075
Diamond fields: tee-ball	38	11,270	4,381	4,381	4,843
Rectangular fields: football field	38	21,750	0	6,571	7,264
Ice ring (outdoor only)	16	11,168	0	0	0
Multipurpose synthetic field	15	35,238	0	6,571	7,264
Skate park	14	27,375	0	0	0
Rectangular fields: lacrosse field	11	12,522	0	0	0
Rectangular fields: cricket field	9	199,889	0	0	0
Overlay field	6	10,820	0	6,571	7,264
Rectangular fields: field hockey field	4	20,893	0	0	0

RECREATION PROGRAMMING COMPARISON

The core programs offered by Ada Township Parks and Recreation generally align with the top key programming offered by similar-sized Parks and Recreation agencies surveyed by NRPA.

NRPA Programming Offered by Park and Recreation Agencies (ranked by percentage from highest to lowest)	Programming Offered by Ada Township Parks and Recreation Department (ranked by percentage from highest to lowest)
1. Team Sports	1. Team Sports (Softball/Baseball)
2. Theme Special Events	2. Youth
3. Social Recreation Events	3. Adult/Family
4. Health and Wellness Education	4. School Groups
5. Safety Training	5. Volunteers
6. Aquatics	
7. Individual Sports	
8. Trips and Tours	
9. Racquet Sports	
10. Performing Arts	
11. Martial Arts	
12. Cultural Crafts	
13. Virtual Arts	
14. Natural and Cultural History Activities	
15. Golf	

PARKS AND RECREATION AGENCY RESPONSIBILITY COMPARISON

Ada Township's Parks and Recreation Department's responsibilities are in line with the key responsibilities of park and recreation agencies. It is noted that these responsibilities extend beyond the traditional agency roles of operating parks/facilities and providing recreation programming services.

Key Responsibilities of Park and Recreation Agencies		
Responsibility	% of Agencies	Ada Township
Operate and Maintain Park Sites	95	✓
Provide Recreation Programming and Services	92	✓
Have Budgetary Responsibility for its Administrative Staff	89	✓
Operate and Maintain Indoor Facilities	88	✓
Operate, Maintain or Manage Trails, Greenways and/or Blueways	75	✓
Conduct Major Jurisdiction-wide Special Events	73	✓
Operate, Maintain, or Manage Special-Purpose Parks and Open Space	66	✓
Operate and Maintain Non-Park Sites	63	✓
Include in its Operating Budget the Funding for Planning and Development Functions	62	✓
Administer or Manage Tournament/Event Quality Outdoors Sports Complexes	55	

PARKS AND RECREATION AGENCY STAFFING COMPARISON

Ada Township employs 5.5 full-time equivalent employees (FTEs). Agencies serving similar-sized communities have a median of 9.8 FTEs. The Township’s Parks and Recreation Department FTEs are within the range of FTEs for similar-sized communities which is ranges from the lower quartile of 4.8 FTEs to the upper quartile of 18.1 FTEs.

It should also be noted that, in addition to its staff, the Township Parks and Recreation Department relies on volunteers to assist with running recreation programs and to supplement facility maintenance through Stewardship Days. In 2017, sixty-two individual volunteers provided 589 volunteer hours. Volunteers are a valuable resource but are not a sustainable way to meet agency staffing needs.

Stakeholder engagement indicated a need for additional employees. This is further outlined in the Recommendations section of this report.

Parks and Recreation Agency Staffing: Full-Time Equivalents (FTE)	
NRPA Less than 20,000 Population	Ada Township
9.8	5.5

Ada Township Parks and Recreation Agency Staffing

1. Parks Director (full-time)
2. Maintenance Staff Person (full-time)
3. Maintenance Staff Person (full-time)
4. Maintenance Staff Person (full-time)
5. Park Worker, Gates (part-time)
6. Administrative Assistant (part-time)
7. Recreation Programmer Softball/Sports (seasonal, part-time)
8. Recreation Assistant Softball (part-time)
9. Recreation Assistant Softball (part-time)
10. Recreation /Education Programs Intern (seasonal, part-time)

PARKS AND RECREATION AGENCY BUDGET AND EXPENDITURES COMPARISON

Annual Operating Expenditures

The Township’s annual operating expenditure is below the range of agencies serving a community with less than 500 residents per square mile. The range is \$545,254 to \$1,426,272 for total operating expenditures.

Annual Operating Expenditures (by population per square mile)	
NRPA Less than 500 Median	Ada Township 2012-2017 Average
\$1,426,272	\$398,321

Annual Operating Expenditures Per Capita

The Township’s operating expenditure per capita is within the range of agencies serving communities with a population density less than 500 residents per square mile. The range is \$16.01 to \$86.23 with a median of \$41.23.

Annual Operating Expenditures per Capita (by population per square mile)	
NRPA Less than 500 Median	Ada Township 2012-2017 Average
\$41.23	\$30.31

Annual Operating Expenditures Per Employee

The Township's operating expenditures per employee is within the range for agencies serving similarly dense communities. The range is \$61,492 to \$121,312 of annual operating expenditures per full-time employee.

Annual Operating Expenditures per Employee (by population per square mile)	
NRPA Less than 500 Median	Ada Township 2012-2017 Average
\$85,694	\$72,422

PARKS AND RECREATION AGENCY FUNDING

Park and Recreation Revenue Per Capita

On average, the Township generates \$51,500 per year through program fees and facility rentals. This equates to \$3.92 generated per Ada Township resident. This is within the range of agencies serving similar sized communities. The range is \$1.72 to \$27.56 revenue generated per capita.

Park and Recreation Revenue per Capita (by population per square mile)	
NRPA Less than 500 Median	Ada Township 2012-2017
\$7.27	\$3.92

Cost Recovery

On average, the Township spends \$398,321 on operating expenses. The \$51,500 in revenue generated annually through program fees and facility rentals represents a 13% cost recovery of operating expenses. This is within the range of agencies serving similarly dense communities. The range is 8.5% to 48.0% cost recovery.

Cost Recovery (by population per square mile)	
NRPA Less than 500 Median	Ada Township 2012-2017
20.9%	13%

Five-Year Capital Budget Spending

The Township's five-year capital budget spending for 2012-2017 falls within the typical range for communities with less than 500 residents per square mile. The range is \$250,000 to \$4,843,350.

Five-Year Capital Budget Spending (by population per square mile)	
NRPA Less than 500 Median	Ada Township 2012-2017
\$1,250,000	\$2,761,948

NATIONAL PARKS AND RECREATION TRENDS

A 2018 survey in the June issue of *Recreation Management Magazine* article titled *A Look at Trends in Parks & Recreation* found that the following were the most commonly planned amenity additions for parks in 2018:

1. Splash play areas (planned by 31.4 percent of parks respondents who will be adding features)
2. Dog parks (20.8 percent)
3. Fitness trails and outdoor fitness equipment (20.6 percent)
4. Walking and hiking trails (17.8 percent)
5. Synthetic turf sports fields (16.9 percent)
6. Playgrounds (16.4 percent)
7. Disc golf courses (15.6 percent)
8. Park shelters (15.3 percent)
9. Park restroom structures (13.9 percent)
10. Bike trails (13.9 percent)

The article also noted that the percentage of survey respondents adding splash play areas, dog parks, walking and hiking trails, and disc golf courses showed an increase from 2017 to 2018. This indicates that national popularity of these amenities is a steady trend. These trends are very similar to public input received during this recreation needs assessment.

The same article found the following programs as the most commonly planned program additions for parks in 2018:

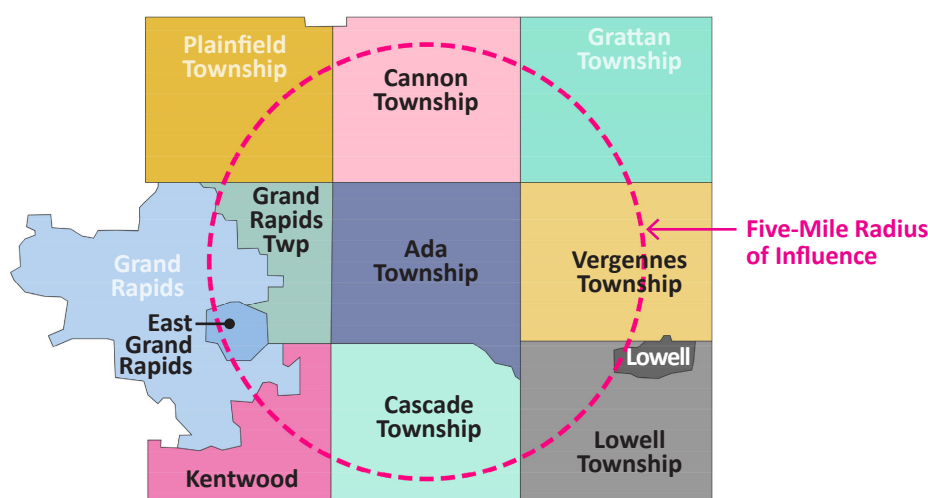
1. Environmental education programs (no change from 2017)
2. Fitness programs (up from No. 3 in 2017)
3. Teen programming (down from No. 2 in 2017)
4. Educational programs (up from No. 5 in 2017)
5. Mind-body balance programs such as yoga (down from No. 4 in 2017)
6. Day camps and summer camps (up from No. 8 in 2017)
7. Special needs programs (did not appear in 2017 in 2017)
8. Adult sports teams (did not appear in 2017)
9. Individual sports activities like running clubs (did not appear in 2017 in 2017)
10. Sport-specific training like tennis or golf lessons (did not appear in 2017)

These program trends are also in line with comments received during the community engagement segment of this recreation needs assessment. Workshop-in-a-Box respondents indicated a desire for organized fitness programs as well as programs for all age groups and blended age groups.



04 REVIEW OF NEIGHBORING COMMUNITIES

This assessment included the development of a matrix of recreation facilities, amenities, programs, and services available in neighboring communities to establish a benchmark of regional standards and adjacent properties that are available to Ada Township Residents. The full matrix can be found in **Appendix D: Neighboring Community Recreation Facility and Program Inventory**. Facilities located within a five-mile radius of influence from the center of Ada Township were determined to be geographically close enough to be conveniently used by Township residents. The selection of adjacent communities to include was corroborated with input received through stakeholder engagement regarding recreational facilities and programs used outside of Ada Township. Some of the most frequently listed facilities included MVP in Grand Rapids Township and Kentwood, Cascade Library, Shaggy Pines Dog Park in Cascade Township, and Mary Free Bed YMCA in Cascade Township. The neighboring communities in this assessment include: Grand Rapids Charter Township, East Grand Rapids, Kentwood, Cascade Township, Lowell Charter Township, Vergennes Township, and Cannon Township.



To make accurate comparisons, the chart below lists each adjacent community's population, land area, and population density per the United State Census Bureau's 2010 census. Ada Township is most similar in population, land area, and population density to Cascade and Canon Townships. Although Grand Rapids Charter Township has a similar population, its density is three times greater than Ada Township.

Community	Population (2010)	Land Area mi ²	Density person/ mi ²
Ada Township	13,142	36.1	355.2
Grand Rapids Charter Township	16,661	15.4	1,081.8
East Grand Rapids	10,694	2.93	3,644.9
Kentwood	48,707	20.90	2,300
Cascade Township	17,134	33.9	492.4
Lowell Charter Township	5,949	32.6	178.6
Vergennes Township	4,189	34.7	118.3
Cannon Township	13,336	35.9	359.5

* Communities highlighted in gray are most similar to Ada Township in population, land area, and population density.

Recreation Facility Comparison

Ada Township owns and operates 11 parks, Cascade Township owns and operates 6 parks, Cannon Township owns and operates 2 parks. Compared to similar-sized adjacent communities, Ada Township owns and operates more recreation facilities. This is in keeping with similar-sized communities per the 2018 NRPA Agency Performance Review.

Residents per Park (Township Owned Parks)			
NRPA Less than 20,000 Population	Ada Township 2010	Cascade Township 2010	Cannon Township 2010
1,318	1,195	2,856	6,668

For similar-sized communities, Ada Township exceeds both adjacent communities and national median per the 2018 NRPA Agency Performance Review in the acres of park land per 1,000 residents.

Acres of Park Land per 1,000 Residents (Township Owned Parks)			
NRPA Less than 20,000 Population	Ada Township 2010	Cascade Township 2010	Cannon Township 2010
10.8	38.8	23.8	3.1

Recreation Program Registration

Ada Township Parks and Recreation Department offers phone, email, walk-in, or mail-in registration for their recreation programs. Online registration is not currently available. Of the adjacent communities that offer recreation programs through their Parks and Recreation Department, both East Grand Rapids and Kentwood offer online registration.

Recreation Program Registration Method					
Community	Online	Phone	Walk-in	Mail-in	Email
Ada Township	-	✓	✓	✓	✓
East Grand Rapids	✓	✓	✓	✓	-
Kentwood	✓	✓	✓	✓	-

REGIONAL PARKS AND RECREATION TRENDS

During a session titled “A Tale of Two Parks Departments: Kalamazoo and Portage,” at the 2018 Michigan American Society of Landscape Architects (ASLA) Annual Meeting, Sean Fletcher, Kalamazoo Parks and Recreation Director and Kathleen Hoyle, City of Portage Parks, Recreation and Senior Citizens Services Director both stated that the recreation trends in their communities include a demand for pickle ball, kayaking, outdoor gyms, and trails. Sean Fletcher stated that softball participation had declined and there is a increased demand for multi-use fields for lacrosse, rugby, and ultimate Frisbee.

SUMMARY OF FINDINGS

Relative to similar-sized neighboring communities, Ada Township is in keeping with providing a variety of recreation opportunities and programs. Kentwood’s population is nearly four times that of Ada Township; however, Kentwood Parks and Recreation provides a good regional example in terms of the diversity of facilities and programs. Additionally, of the neighboring communities, Kentwood is the only one to offer a broad range of programs and online registration.

05 STAKEHOLDER ENGAGEMENT

The Ada Township Recreation Needs Assessment included three primary forms of stakeholder engagement. These were: an online tool called **Community Remarks®**; a **Leadership Workshop Cafe**; and a self-guided input method called **Workshop in a Box**.

STAKEHOLDER ENGAGEMENT OBJECTIVES

Stakeholder engagement objectives were to:

1. Gain broader stakeholder input than achieved with previous surveys;
2. Provide for one-on-one consultation with individual stakeholders;
3. Interaction with stakeholder groups and the public;
4. Include the use of Ada Township's web presence and social media to communicate and facilitate an ongoing dialogue with the community.

STAKEHOLDER ENGAGEMENT METHODS

Community Remarks® On-line Tool

Community Remarks® was launched on July 3, 2018, and was active through July 22, 2018. The tool interfaced with Google Maps, and participants were able to place comments within six topics on specific locations, and were able to leave general comments as well. Topics included:

- Existing Parks and Facilities
- Parks, Playgrounds, and Recreation Facilities-new locations and ideas
- Trails-new locations and connections
- Proposed Green space-large and small locations
- Headley Street Property
- Recreational Facilities Used Outside of Ada Township

A total of 350 comments were posted on the site; this number represents the original comments as well as the "likes" and "dislikes" that were posted on any individual comment. No comments were posted for the topic "Recreational Facilities Used Outside of Ada Township."

Included in the results of Community Remarks® is a document named Community Remarks® Complete List of Comments. The purpose of this document is to include an interactive web-based ID which links any comment to its location within Ada Township. When clicking on the link, the user is brought directly to a location on Google Maps where the original pin was dropped when the participant made a comment.

Detailed information regarding the topics and results are found in the Community Remarks® On-line Survey Summary found in the Appendix.

Leadership Workshop Cafe

A Leadership Workshop Cafe was held on August 22, 2018. Approximately 35 community leaders participated in this event, which was by invitation only. Representation included persons from Ada Township Board of Trustees; Ada Township Planning Commission; Ada Township Parks, Recreation, and Land Preservation Advisory Board; the Ada Downtown Development Authority and Citizens Council; Ada Business Association; Forest Hills Public Schools Community Services; Michigan Department of Natural Resources-Wildlife Division; Lowell Arts; Kent County Parks Department; Ada Historical Society; Ada Township Parks and Recreation staff; and youth representation from Forest Hills Public Schools.

The Leadership Workshop Cafe participants were asked to provide comments on eight topics relating to parks and recreation programs and amenities in Ada Township; recreational facilities used outside the Township; and on roadblocks or problems in providing recreation or access to recreation in Ada Township.

Results of the Leadership Workshop Cafe by topic, along with primary recommendations that emerged from each topic, are included in the Ada Township Recreation Needs Assessment Leadership Workshop Cafe Results and Primary Recommendations found in the Appendix.

Workshop in a Box

The Workshop in a Box self-guided input method was completed by three civic groups: The Ada Rotary, the Adacraft Commons Association, and the O.W.L.S group (Older Wiser Lively Seniors) from St. Robert of Newminster Church. These three groups represented a cross-section of the population of Ada Township, including persons with business interests, a homeowners' association, and a senior group associated with a religious institution. A total of 31 persons were involved in the Workshop in a Box method.

Information sought from the participants of Workshop in a Box was similar to that sought from participants of the Leadership Workshop Cafe. Results obtained from the three groups were extensive; grouping of common ideas within groups was not practical, except in the case of information gathered for the Headley Street Property. However, the results from all three groups were combined, and this shows the common themes and ideas that emerged from the three groups when taken together as a whole.

The complete results of the Workshop in a Box method are included in the Ada Township Recreation Needs Assessment Workshop in a Box Results found in the Appendix.

SUMMARY OF FINDINGS

Common Themes

Input gained from the stakeholder engagement methods covers a broad range; to attempt to combine all the data from the three methods of input may result in a diminishing of the results; rather, Ada Township is encouraged to examine the results of each input method and to use the data to inform future decisions regarding parks, recreation facilities and amenities, and recreation programming.

Common themes are evident in the results of the stakeholder input, and in general some of these themes include, but are not limited to, the following:

- High value for water access and development of water trails
- High value for land-based trails, including bike paths, and a desire to expand and improve the trail system
- A strong desire for water access in the form of a splash pad or pool
- A desire for programs for all age groups and blended age groups
- High value for organized fitness programs and opportunities
- A desire for more green space, both large and small
- Continued discussion on use of the Headley Street Property is indicated
- A variety of recommendations, primarily public use, were given in regard to the best use for the Headley Street Property
- A recognition that some activities that are used outside the Township will continue to be used
- Moderately strong desire for a location for ice skating

Additionally, unique ideas were presented that may have been mentioned less often, but could be considered by Ada Township if a champion for a specific idea emerges or staff becomes available; one example is to provide a rink for Bicycle Polo; another is to offer a competition similar to Ninja Warrior.

06 RECOMMENDATIONS

The goal of the Recreation Needs Assessment was to provide recommendations for potential future recreation amenities in Township parks and to provide a guide for planning future recreation programs and support services.

The following list of recreation facility and program recommendations has been developed based on analysis of information gathered through the following methods:

1. Review of Existing Plans, Studies, and Surveys: **“What are current conditions in Ada Township?”**
2. Review of National Metrics, Standards, and Trends: **“How does Ada Township compare to similar sized communities on a National Level?”**
3. Review of Neighboring Communities: **“How does Ada Township compare to neighboring communities?”**
4. Stakeholder Engagement: **“How do residents, civic groups, and community leaders view Ada Township recreation program and facility offerings?”**

RECOMMENDATION: **TRAILS**

Community engagement for this recreation needs assessment indicated a desire for new trail locations and connections. One of the top four high-energy ideas from the Leadership Cafe was, “connectivity to neighboring trails, more than currently available.” This echoes input received in the *2017 Parks, Recreation and Land Preservation Plan Public Opinion Survey*, where respondents ranked non-motorized trails and bike paths as the most frequently used of all recreation options.

Aside from the recreation opportunity they provide, trails perform the key function of connecting recreation properties, thereby creating an accessible network that promotes the use of open space. Further development of the trail system will improve access for all Ada residents both within the Township and outside to regional recreation offerings.

A planned bridge between Chief Hazy Cloud and Roselle Park is an important part of this system, providing a connection across the Grand River.

It is recommended that the Township develop an overall strategy, building on the 2017 Trail System to establish an interconnected network of bike lanes, bike paths, pathways, hiking trails, water trails, and equestrian trails linking recreation facilities and trails systems within the Township and regionally.

RECOMMENDATION: **WATER ACCESS**

The Grand and Thornapple Rivers are two of Ada’s greatest recreation assets and providing easy access to them is critical. Community engagement highlighted a strong demand for greater access to the rivers and development of water trails. The Kent County Water Trails System within Ada has boat launch locations at the Knapp Avenue and Fulton Street DNR Ramps. There are hand launch locations at Ada Dam and Chief Hazy Cloud Park. As it expands, it is anticipated that Chief Hazy Cloud Park amenities will include a focus river-based recreation. Additional locations for water access launches should be explored as the park is further developed.

It is recommended that a study be conducted to determine the best parks and open space for additional boat and hand launch locations to facilitate greater access to the river.

RECOMMENDATION: **AMENITIES**

From community engagement, the primary recurring desired amenity additions were a splash pad, dog park, pickle ball, community garden, disc golf, and ice skating. Based on community input, these items can be added to existing properties where uses and user groups are compatible.

Splash Pad

Community input and national trends indicate that a splash pad is a highly desired recreation facility. It is recommended that a study be conducted to determine the best location for a splash pad within the Township. Community input strongly favored public use as the best use for the Headley Street property. As such, this is a potential location for a splash pad in conjunction with other public amenities that could support and enhance the future adjacent Township Library.

Dog Park

Community input expressed a desire for a dog park within the Township. Dog parks enable dogs to socialize and exercise off-leash. They can be urban or in a park setting and can vary in size and complexity. Cascade Township park is a good example of adding an off-leash dog area to an existing park. A 1-acre dog park with separate areas for smaller and larger dogs was added in 2016. Wags West Dog Park, a half-acre facility in Traverse City is a good example of a smaller dog park with areas for both large and small dogs.

It is recommended that dog park size and location within the Township be determined through a review of current park capacity and community input.

Pickle ball

In the summer of 2018, two tennis courts at Ada Township Park were converted into six pickle ball courts. It is recommended that the Township assess the impact the new pickle ball courts have on demand before determining if additional courts are needed.

Community Garden

Community input indicated a strong desire for a community garden at the Headley Street Property. This central location is appropriate and could be included as a program element for future development of the Headley Street site.

Disc Golf

Across the community engagement methods, there was a repeated desire for a disc golf course. Disc golf courses are a relatively low-impact, low-cost amenity that can easily be added to under-utilized areas of existing parks such as floodplains. Local clubs hosting tournaments can be an additional source of parks and recreation revenue through facility rental and park-user fees. A good example is Burchfield Park in Holt, Michigan. The park hosts two 18-hole disc golf courses. A daily disc golf pass is \$4 per person for adults. Disc rental is available for an additional fee. Recently Burchfield Park hosted the 2018 Professional Disc Golf Association United States Women's Championships, a three-day event with 159 total professional and amateur players. With the expansion of Chief Hazy Cloud Park, this could be a good location for a disc golf course.

Ice Skating

Both permanent and temporary ice skating rinks are costly to build and operate. It is recommended that a study be conducted to determine if an ice rink is logistically and financially feasible for the Township.

Outdoor Fitness Equipment

On a national level, outdoor fitness equipment ranked as the third most commonly planned amenity addition for parks in 2018. Community input for this assessment indicated a strong desire for both fitness programs and fitness opportunities. A potential partnership for the Township is with the National Fitness Campaign (NFC). NFC partners with cities to secure funding for Fitness Courts, an outdoor bodyweight circuit training system designed for adults of all ages and abilities.

RECOMMENDATION: RECREATION PROGRAMMING

Workshop-in-a-Box respondents indicated a desire for organized fitness programs as well as programs for all age groups and blended age groups. Fitness programs are a top national trend. Currently the Township does not provide targeted senior or teen programs. Further study of community recreation programming demands should be conducted to better determine additional age-specific programs that should be offered.

The future Amy Van Andel Library and Community Center will offer the Township partnership opportunities to help meet resident demand for additional recreation programming.

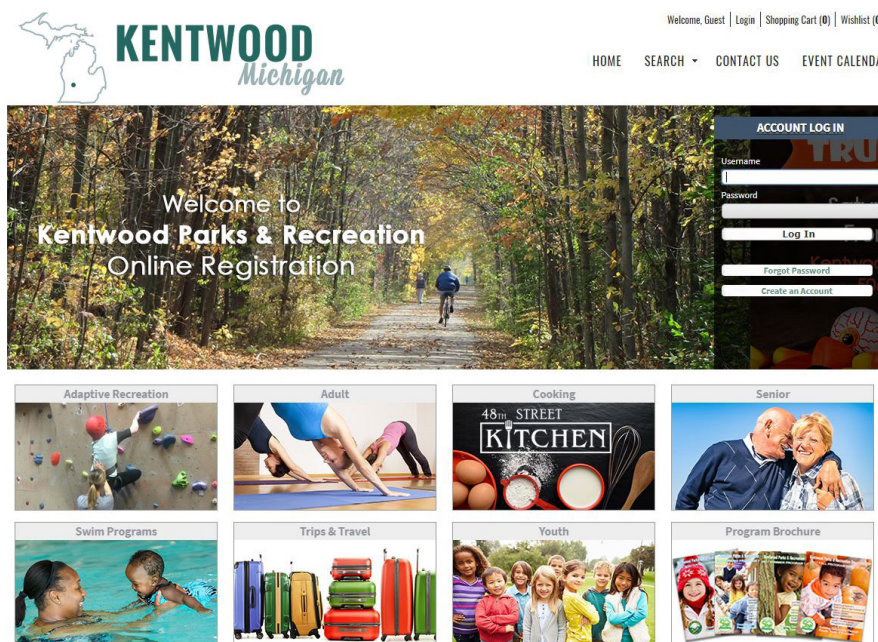
RECOMMENDATION: TECHNOLOGY

Currently Ada Township Parks and Recreation Department requires residents to register and pay in person for recreation programs and sports leagues. Additionally, credit card payments for program registration are only possible in person at the Township Hall. The public opinion survey conducted as part of the *Ada Township 2017 Parks, Recreation and Land Preservation Plan* had an overwhelming response in favor of online registration for recreation/education programs. Community engagement performed for this study echoed this response. It was noted that it is difficult to register for programs and rentals and there is no online registration process.

Additionally, the *Ada Township 2017 Parks, Recreation and Land Preservation Plan* Action Plan included software and technology improvement goals of 1) adding an additional computer, 2) adding capacity for credit card payments and on-line registrations, 3) adding facility management and data base software, 4) increasing integration of Township software, data and GIS systems, and 5) increasing staff access to computers.

Manual processing is time-consuming for Parks and Recreation staff. Online registration and payment is more convenient and increases accessibility for residents. Increased accessibility promotes increased participation and revenue.

In addition to providing online registration and payment, parks and recreation software can provide extensive reporting and statistical data that can be used to increase efficiency and productivity as well as inform planning. Parks and recreation software can also assist with cost recovery analysis for programs, events, and rentals.



Example: Online Registration, Kentwood, Michigan

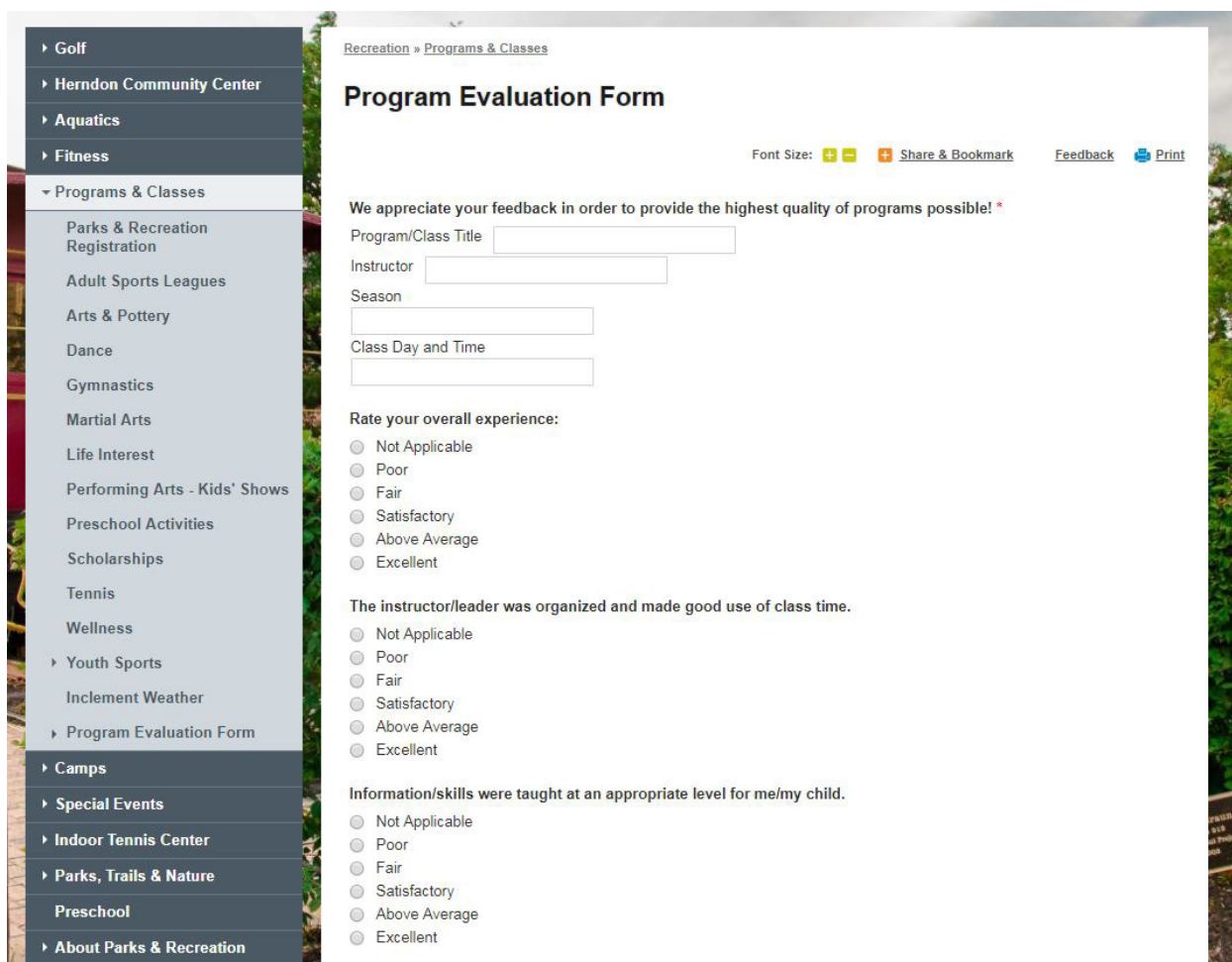
RECOMMENDATION: **HEADLEY STREET PROPERTY**

The Advisory Board expressed a specific desire to seek public input on the best use of the Headley Street Property, a 3-acre piece of land located between Headley Street and Fulton Street (M-21). The overwhelming public response on to how to use this property was as public space. An additional study with community engagement specific to this property would assist in developing a plan best suited for the community.

RECOMMENDATION: **COMMUNITY ENGAGEMENT**

In both the Ada Township 2017 Parks, Recreation and Land Preservation Plan and this Recreation Needs Assessment, it was noted that community engagement participation was low. The Ada Township *2017 Parks, Recreation and Land Preservation Plan* had roughly 321 respondents. This Recreation Needs Assessment included 350 comments through Community Remarks®, 35 participants in the Leadership Workshop Cafe, and 31 participants in the Workshop in a Box.

Seeking more frequent feedback from facility and program users may help to achieve more community input. It would also allow for periodic micro adjustments to improve facility and program function. This could be achieved through an Online Program or Facility Evaluation Form.

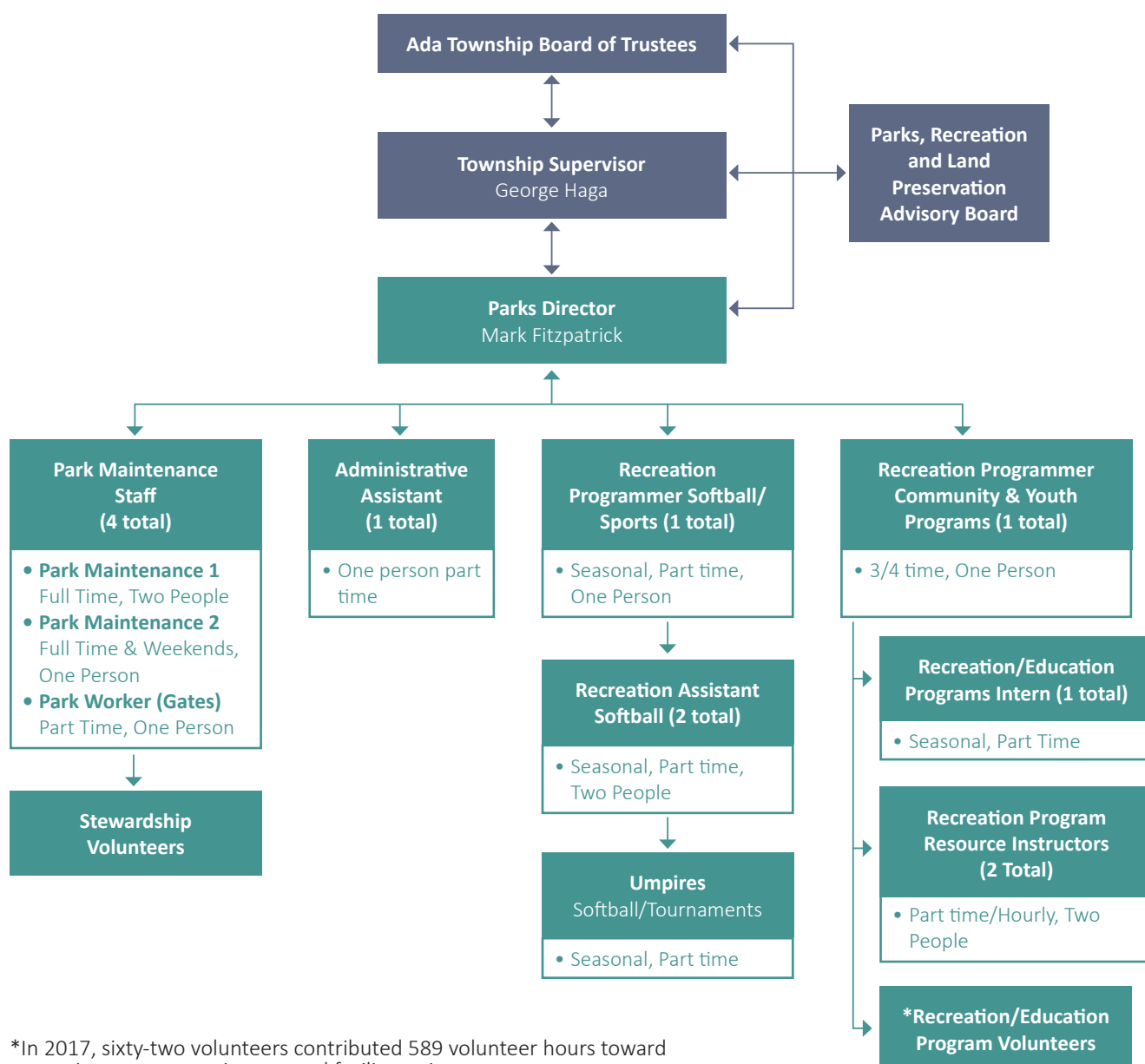


Example: Online Program Evaluation Form

RECOMMENDATION: PARKS AND RECREATION AGENCY STAFFING & STRUCTURE

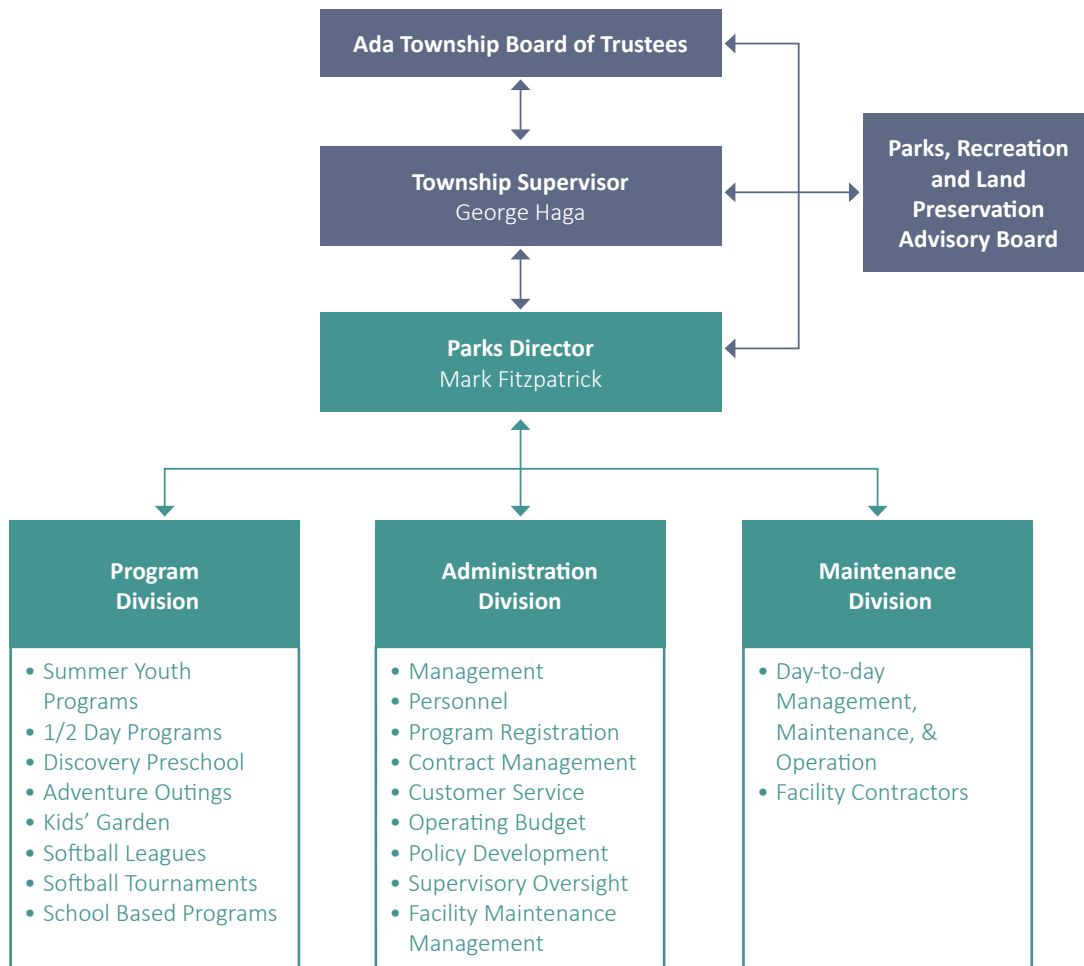
According to the 2018 NRPA Agency Performance Review, with 8.5 Full Time Equivalent Employees (FTEs), Ada Township's Parks and Recreation Department falls just below the median of agencies serving communities of less than 20,000 population. The median number of FTEs for a community of 20,000 or less is 9.8 FTEs, the lower quartile is 4.8 FTEs and the upper quartile is 18.1 FTEs. A strategic plan for the Parks and Recreation Department should be conducted to clearly outline the focus and goals of the department as well as the overall structure and required number of FTEs to meet those goals. The charts below show the current Parks and Recreation organizational structure and on the following page, a potential new structure. There are a variety of organization structures, the development of a strategic plan will assist in determining the appropriate structure for Ada Township Parks and Recreation Department.

Current Ada Township Parks, Recreation and Land Preservation Program Organizational Chart



*In 2017, sixty-two volunteers contributed 589 volunteer hours toward recreation program assistance and facility maintenance.

Potential Ada Township Parks, Recreation and Land Preservation Program Organizational Chart



07 SUMMARY OF KEY FINDINGS

One of Ada Township's major strengths is the diversity of natural features and recreation opportunities it offers its residents. The Township is characterized by wooded, rolling hills, expansive meadows, farmland, streams, wetlands and the convergence of the Grand and Thornapple rivers. Over 1,000 acres of public land and parks within Ada Township provide residents an extensive variety of recreation facilities. Proper planning and utilization of resources is critical in meeting the current and future recreation facility and program demands of the Township's residents.

This Recreation Needs Assessment established a baseline of current conditions within the Township and recreation trends (regionally and nationally). The establishment of current conditions includes an update to the Township's recreation facility inventory. This includes the addition of Settlers Grove Riverside Park (to be completed Spring 2019) and the expansion of Kent County's Chief Hazy Cloud Park. Settlers Grove Riverside Park provides a new recreation opportunity within the Village. It is a component of *2013 Envision Ada* and includes a playground, restrooms, the Ada Village General Store (privately operated), paved paths, benches and trees, and a deck/stage. Chief Hazy Cloud Park will expand to nearly 400 acres with the acquisition of 125 acres adjacent to the existing park and across the Grand River from Roselle Park. Planned improvements for the expanded park include a pedestrian bridge over the Grand River between Roselle and Chief Hazy Cloud parks, increased river access, multi-purpose trail, boardwalk, and equestrian and nature trails. These improvements will provide additional recreation opportunities and facilitate the connection of existing trails and parks and open space within the Township.

Community engagement for this Assessment found that among residents there is a high value for water access and development of water trails; high value for land-based trails, including bike paths, and a desire to expand and improve the trail system; a strong desire for water access in the form of a splash pad or pool; a desire for programs for all age groups and blended age groups; high value for organized fitness programs and opportunities; a desire for more green space (both large and small); and a variety of recommendations (primarily public use) for the best use of the Headley Street Property.

Based on current conditions and trends and community engagement, recommendations in this assessment include:

1. Establishing a framework for an interconnected network of bike lanes, bike paths, pathways, hiking trails, water trails, and equestrian trails linking recreation facilities and trails systems within the Township and regionally;
2. Exploring locations for increased water access;
3. Adding amenities such as a dog park, splash pad, disc golf course, and community garden to existing parks;
4. Conducting a specific study with community engagement for the Headley Street property to assist in developing a plan best suited for the community;
5. Implementing parks and recreation software for online registration and payment, and for assistance with reporting and statistical data to be used to increase efficiency and productivity and inform recreation planning;
6. Providing an Online Program or Facility Evaluation Form to seek more frequent feedback from facility and program users; and
7. Conducting a strategic plan for the Parks and Recreation Department to clearly outline the focus and goals of the department.

These recommendations provide the Township with a guide for potential future recreation amenities in Township parks and a guide for planning future recreation programs and support services.



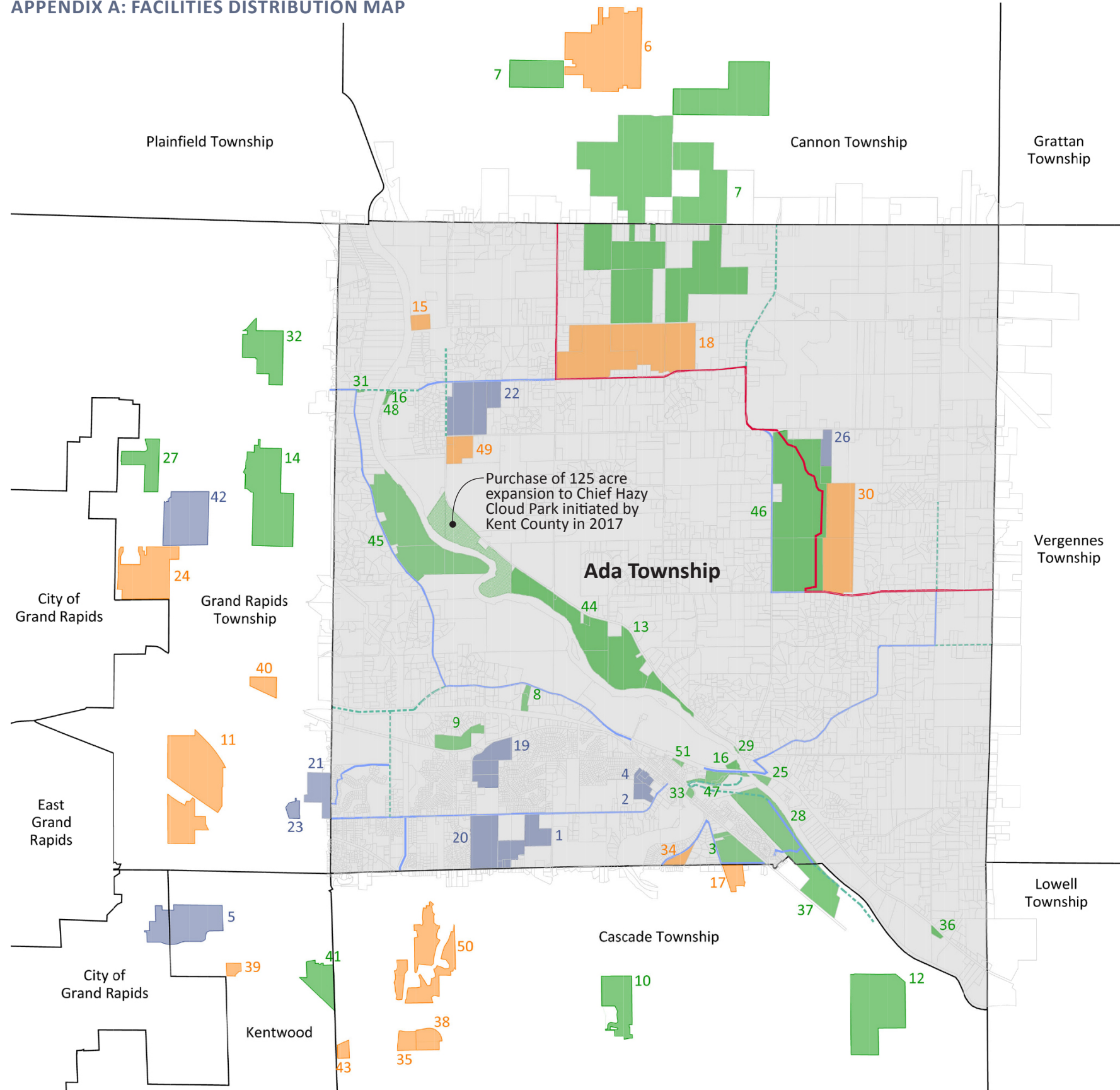
TOWNSHIP

RECREATION FACILITIES AND PROGRAMS NEEDS ASSESSMENT

APPENDIX

NOVEMBER 2018

APPENDIX A: FACILITIES DISTRIBUTION MAP



- Public Parks and Open Space
- Schools
- Private Recreation
- Local Trails
- - - - - Future Trails
- North Country Trail and Iron Belle Trail

1. Ada Christian School *
2. Ada Elementary School *
3. Ada Township Park *
4. Ada Vista Elementary *
5. Calvin College Ecosystem Preserve
6. Cannonsburg Ski Area
7. Cannonsburg State Game Area *
8. Carl Creek Crossing *
9. Carl Creek Preserve *
10. Cascade Burton Park
11. Cascade Hills Country Club
12. Cascade Peace Park
13. Chief Hazy Cloud Park *
14. Crahen Valley Park
15. Creston Rod & Gun Club *
16. DNR State Boat Launch (2 Locations) *
17. Double C Ranch/Curtis Performance Horses
18. Egypt Valley Country Club *
19. Forest Hills Central Woodlands 5/6 School *
20. Forest Hills Central Middle and High School*
21. Forest Hills Community & Aquatic Center
22. Forest Hills Eastern High School *
23. Forest Hills Park Association
24. Frederik Meijer Gardens
25. Grand River Fulton Street Preserve *
26. Goodwillie Environmental School *
27. Grand Rapids Township Park
28. Grand River Nature Area and Preserve *
29. Grand River View Preserve *
30. Kent County Conservation League *
31. Knapp Corner Preserve *
32. Knapp Forest Preserve
33. Leonard Field Park *
34. Lions Field (Thornapple Park) *
35. Mary Free Bed YMCA
36. MDOT Roadside Park *
37. Michael McGraw Park
38. MSA Fieldhouse
39. MVP Sportplex
40. MVP Athletic Club
41. Northeast Park
42. Northern High School
43. Patterson Ice Center
44. Pettis Avenue Reith Riley Parcel *
45. Roselle Park *
46. Seidman Park *
47. Settler's Grove Park *
48. Shady Drive Lot*
49. Thomet Stables *
50. Watermark Country Club
51. Headley Street Property - Potential Future Public Green Space *

* Denotes Properties Located in Ada Township

APPENDIX B: ADA TOWNSHIP RECREATION PROPERTIES INVENTORY

The following is an up-to-date inventory of recreation facilities within Ada Township. The facilities are color coded to denote ownership: **Township (black)**, **County (cyan)**, **State (green)**, **Federal (yellow)**, **School (light blue)**, and **Private (red)**. Within the Township there are eleven (11) Township-owned, two (2) County-owned, three (3) State-owned, one (1) Federally-owned, six (6) school-owned, and five (5) privately-owned recreation properties/facilities. In total, there are twenty-eight (28) recreation properties within Ada Township.

ADA TOWNSHIP RECREATION FACILITIES	
Source: Ada Township 2017 Parks, Recreation and Land Preservation Plan, Township Parks & Recreation Department website and seasonal flier, communication directly with the Township Parks & Recreation Department, and Kent County Parcel and GIS mapping.	
Ada Township Park, 57 acres	
Amenities	Programs
<ul style="list-style-type: none"> • Park office building • Storage and maintenance building • Playground • 38 picnic tables • 4 connected gazebos • 2 open field areas • 6 picnic areas • 4 tennis courts • 6 pickle ball courts • 2 softball/baseball diamonds with bleachers • Half-court basketball court • Sand volleyball court • Soccer field • Shelter • Gazebo • Barrier-free restrooms • Grills • Paved paths • Nature trail • Bud Locke Arboretum 	<ul style="list-style-type: none"> • Summer Day Camp • Softball Leagues • School Programs <p>Third Party</p> <ul style="list-style-type: none"> • Forest Hills Girl Scout Day Camp • Grand Rapids Triathlon • August in Ada Children’s Festival (Ada Business Association) • AYSO Soccer
Leonard Field Park, 3 acres	
Amenities	Programs
<ul style="list-style-type: none"> • Softball field • Bike paths • Barrier-free river overlook • River observation deck • Barrier-free restroom • River access 	<ul style="list-style-type: none"> • Softball Leagues • 5k and other Runs • Host site for Annual Bridge Ride • Christmas Bridge Lighting <p>Third Party</p> <ul style="list-style-type: none"> • Beers at the Bridge (Ada Historical Society) • Grand Rapids Triathlon

Roselle Park, 250 acres	
Amenities	Programs
<ul style="list-style-type: none"> • Paved trail system • Non-paved trail system • Observation decks • Canoe landing • Resource Building (restrooms, meeting room) • Parking • Playground • Climbing wall • Picnic tables • Silo observation deck • Cross-country skiing 	<ul style="list-style-type: none"> • Summer Day Camp • Roselle Park River Festival • Grand River-Run • School Programs • Family/Adult Programs <p>Third Party</p> <ul style="list-style-type: none"> • Professional Development Programs
Settlers Grove Riverside Park (under construction), 19 acres	
Amenities	Programs
<ul style="list-style-type: none"> • Restrooms • Walkway • Picnic area • Playground • Stage • Future non-motorized trail connection from riverfront park to the existing non-motorized trail on the M-21 bridge 	<ul style="list-style-type: none"> • Programs to being in 2019
Carl Creek Crossing Preserve, 8 acres	
Amenities	Programs
<ul style="list-style-type: none"> • Gravel walking paths • Boardwalks • Sitting areas 	<ul style="list-style-type: none"> • Day Camps
Carl Creek Wetlands Preserve (unimproved), 34 acres	
Amenities	Programs
<ul style="list-style-type: none"> • Future: non-paved trail system, boardwalk 	
Grand River - Fulton Street Preserve (unimproved), 5 acres	
Amenities	Programs
<ul style="list-style-type: none"> • NA 	<ul style="list-style-type: none"> • NA in flood plain
Grand River Nature Area and Preserve (unimproved), 120 acres	
Amenities	Programs
<ul style="list-style-type: none"> • Paved trail • Natural trail 	<ul style="list-style-type: none"> • NA in flood plain
Grand River View Preserve (unimproved), 0.5 acres	
Amenities	Programs
<ul style="list-style-type: none"> • No future improvements planned 	<ul style="list-style-type: none"> • NA in flood plain

Knapp Corner Preserve, 1 acre	
Amenities	Programs
<ul style="list-style-type: none"> • “Welcome to Ada Township” sign • Bench • Native plant landscaping • Bike Path 	<ul style="list-style-type: none"> • NA
Pettis Avenue Parcel (unimproved), 3 acres	
<ul style="list-style-type: none"> • Potential future merge with Chief Hazy Cloud Park 	<ul style="list-style-type: none"> • NA
Shady Drive Preserve (unimproved), 0.15 acres	
<ul style="list-style-type: none"> • NA 	<ul style="list-style-type: none"> • NA
Ada Township Bike Trails, approximately 19 miles existing (7.5 miles planned future)	
Amenities	Programs
<ul style="list-style-type: none"> • Bike Path 	<ul style="list-style-type: none"> • NA
Seidman Park, 530 acres (Kent County)	
Amenities	Programs
<ul style="list-style-type: none"> • Trail network • Cross-country skiing • Paved non-motorized trail network • Picnic shelters • Primitive/portable restroom facilities • Boardwalk 	
Chief Hazy Cloud Park, 261 acres (Kent County)	
Amenities	Programs
<ul style="list-style-type: none"> • Parking • River access • Canoe/kayak launch • Picnic area • Future: trails 	
Cannonsburg State Game Area, 1,300 acres (State)	
Amenities	Programs
<ul style="list-style-type: none"> • Hunting • Hiking • Mountain biking • Boardwalk • Parking 	
Michigan DNR Grand River Public Access Site at Knapp Ave, 1 acre (State)	
Amenities	Programs
<ul style="list-style-type: none"> • Boat launch ramp • Gravel parking area • Pit-type restrooms 	<ul style="list-style-type: none"> • Youth canoe trip

Michigan DNR Grand River Public Access Site at Fulton Ave, 4.7 acre (State)	
Amenities	Programs
<ul style="list-style-type: none"> Boat launch ramp Gravel parking area Pit-type restrooms 	<ul style="list-style-type: none"> Youth canoe trip
MDOT Ada Roadside Park, 3.5 acres (State)	
Amenities	Programs
<ul style="list-style-type: none"> Picnic tables Grills Restroom facilities 	
Iron Belle/North Country Trail 7.5 miles (State & Federal)	
Amenities	Programs
<ul style="list-style-type: none"> Hiking route 	
Ada Elementary School, 15 acres	
Amenities	Programs
<ul style="list-style-type: none"> Play area Ball field (2) Youth soccer (2), one overlay (i.e. soccer field using softball outfield) Multi-Use Hard-court (basketball) Gymnasium Playground Tot lot 	Third Party <ul style="list-style-type: none"> Little League AYSO youth soccer Youth football league
Ada Vista Elementary	
Amenities	Programs
<ul style="list-style-type: none"> Playground Basketball court Multi-Use Hard-courts (2, basketball) Youth soccer (2), one overlay Softball Gymnasium (not available to public) Track (not available to public) 2 ball fields (not available to public) 	Third Party <ul style="list-style-type: none"> AYSO youth soccer
Ada Christian School	
Amenities	Programs
<ul style="list-style-type: none"> Playground Softball field (adult) Softball field (youth) Hard-surface play area 4 youth soccer fields Adult soccer field 	

Forest Hills Central Middle and High Schools, 53 acres	
Amenities	Programs
<ul style="list-style-type: none"> • 2 Gymnasiums • Tennis courts (8) • Baseball diamond • Softball (adult) • Softball (youth) • 2 Soccer fields (adult), one synthetic • Football field, synthetic, multi-use • Track • Open play-field • Auditorium (not available to public) 	<ul style="list-style-type: none"> • Community education
Forest Hills Central Woodlands School	
Amenities	Programs
<ul style="list-style-type: none"> • Playground • Softball Field (youth) • Soccer field (adult) • Multi-Use Hard-court (Basketball) • Volleyball • Trail 	
Forest Hills Eastern Middle and High Schools, 115 acres	
Amenities	Programs
<ul style="list-style-type: none"> • Gymnasiums (2) • Tennis courts (8) • Soccer field • Baseball diamond • Softball diamond • Overlay Field (soccer, softball) • Football field (synthetic, multi-purpose) • Multi-purpose rectangular field (2) • Track and field facilities • Open play-fields • Performance theater • Auditorium. • Community garden 	
Ada Dance Academy (PRIVATE)	
Amenities	Programs
<ul style="list-style-type: none"> • Dance studios (4) 	<ul style="list-style-type: none"> • Dance lessons • Professional dance instruction
Creston Rod and Gun Club (PRIVATE)	
Amenities	Programs
<ul style="list-style-type: none"> • Skeet • Trap • Shooting range 	<ul style="list-style-type: none"> • Winter and Summer League

Egypt Valley Country Club (PRIVATE)	
Amenities	Programs
<ul style="list-style-type: none"> • 27-hole golf course • Tennis courts (4) • Outdoor swimming pool • Clubhouse 	
Kent County Conservation League (PRIVATE)	
Amenities	Programs
<ul style="list-style-type: none"> • Clubhouse • Trap range • Skeet range • Sporting clays range • Rifle range • Pistol range • Archery range 	<ul style="list-style-type: none"> • Skeet, 5-stand, Trap, and Sporting Clays School-age kids shooting program • Group or private lessons • Corporate outings • Membership shooting
Lions Field (Thornapple Valley Community Park) (PRIVATE)	
Amenities	Programs
<ul style="list-style-type: none"> • 5 Baseball diamonds (3 youth) • 12 Picnic tables • 2 Playgrounds • Batting cage • Restrooms • Concessions • Picnic Shelter • Grill 	<ul style="list-style-type: none"> • Thornapple Valley Baseball League
Thomet Stables (PRIVATE)	
Amenities	Programs
<ul style="list-style-type: none"> • Box stalls • Indoor riding arena • 60' round pen • 125' x 225' lighted outdoor jump arena • Outdoor dressage arena • Riding fields with cross country jumps • Over 100 acres trail riding 	<ul style="list-style-type: none"> • Riding instruction • Horse shows

APPENDIX C: RECREATION FACILITIES MATRIX (FACILITIES OWNED BY ADA TOWNSHIP ONLY)

The facilities are color coded to denote ownership: **Township (black)**, **County (cyan)**, **State (green)**, **Federal (yellow)**, **School (light blue)**, and **Private (red)**. Facilities provided by other entities are outlined on the following page.

	% of Agencies Offering Facility	Leonard Field Park	Ada Township Park	Roselle Park	Settlers Grove Riverside Park	Grand River Nature Area & Preserve	Carl Creek Crossings Preserve	Carl Creek Wetlands Preserve	Knapp Corner Preserve	Thornapple Confluence Preserve	Grand River-Fulton Street Preserve	Pettis Avenue Parcel	Ada Township Total Facilities	Ada Township Residents per Facility 2010	Ada Township Residents per Facility 2017 Estimate
Playgrounds	92		1	1	1								3	4,381	4,843
Basketball Courts	83		1										1	13,142	14,528
Tennis Courts (outdoor only)	77		4										4	3,286	3,632
Diamond fields: baseball- youth	75	1	2										3	4,381	4,843
Diamond fields: softball- adult	66	1	2										3	4,381	4,843
Rectangular fields: multi-purpose	63		2										2	6,571	7,264
Diamond fields: softball- youth	59	1	2										3	4,381	4,843
Diamond fields: baseball- adult	55	1	2										3	4,381	4,843
Dog Park	55												0	0	0
Swimming Pools (outdoor only)	52												0	0	0
Totlots	47												0	0	0
Rectangular fields: soccer field- youth	47		1										1	13,142	14,528
Community Garden	46												0	0	0
Rectangular fields: soccer field - adult	42		1										1	13,142	14,528
Multiuse courts- basketball, volleyball	38		1										1	13,142	14,528
Diamond fields: tee-ball	38	1	2										3	4,381	4,843
Rectangular fields: football field	38												0	0	0
Ice ring (outdoor only)	16												0	0	0
Multipurpose synthetic field	15												0	0	0
Skate park	14												0	0	0
Rectangular fields: lacrosse field	11												0	0	0
Rectangular fields: cricket field	9												0	0	0
Overlay field	6												0	0	0
Rectangular fields: field hockey field	4												0	0	0

APPENDIX C: RECREATION FACILITIES MATRIX (INCLUDING FACILITIES PROVIDED BY OTHER ENTITIES)

The facilities are color coded to denote ownership: Township (black), County (cyan), State (green), Federal (yellow), School (light blue), and Private (red).

	Seidman Park (Kent County)	Chief Hazy Cloud (Kent County)	Cannonsburg State Game Area (State)	MIDNR Grand River Public Access Sites (State)	Iron Belle Trail (State)	North County Trail (Nation)	Ada Elementary School	Ada Vista Elementary	Ada Christian	Forest Hills Central Middle and High Schools	Forst Hills Cnetral Woodlands School	Forest Hills Eastern Middle and High Schools	Ada Dance Academy	Creston Rod and Gun Club	Double C Ranch/Curtis Performance Horses (PRIVATE)	Egypt Valley Country Club	Kent County Conservation League	Lions Field (Thornapple Valley Community Park)	Thomet Stables	Other Entity Total Facilities	Ada Township All Total Facilities	Ada Township Residents per Facility 2010 US Census Estimate	Ada Township Residents per Facility 2017 US Census Estimate	NIRPA Agencies Less than 500 People per Square Mile
Playgrounds							1	1	1	1	1							2		7	10	1,314	1,453	6,132
Basketball Courts								1		1										2	3	4,381	4,843	7,869
Tennis Courts (outdoor only)							1			8		8				4				21	25	526	581	5,462
Diamond fields: baseball- youth							2											3		5	8	1,643	1,816	6,628
Diamond fields: softball- adult								1	1	1		1								4	7	1,877	2,075	10,957
Rectangular fields: multi-purpose									1			2								3	5	2,628	2,906	9,043
Diamond fields: softball- youth									1	1	1	1								4	7	1,877	2,075	10,495
Diamond fields: baseball- adult										1		1						2		4	7	1,877	2,075	15,000
Dog Park																				0	0	0	0	51,804
Swimming Pools (outdoor only)																1				1	1	13,142	14,528	42,344
Totlots							1													1	1	13,142	14,528	19,766
Rectangular fields: soccer field- youth							2	2	4											8	9	1,460	1,614	5,584
Community Garden																				0	0	0	0	37,571
Rectangular fields: soccer field - adult									1	2	1	2								6	7	1,877	2,075	10,250
Multiuse courts- basketball, volleyball							1	2	1	1	1									6	7	1,877	2,075	12,757
Diamond fields: tee-ball																				0	3	4,381	4,843	11,270
Rectangular fields: football field										1		1								2	2	6,571	7,264	21,750
Ice ring (outdoor only)																				0	0	0	0	11,168
Multipurpose synthetic field										1		1								2	2	6,571	7,264	35,238
Skate park																				0	0	0	0	27,375
Rectangular fields: lacrosse field																				0	0	0	0	12,522
Rectangular fields: cricket field																				0	0	0	0	199,889
Overlay field									1			1								2	2	6,571	7,264	10,820
Rectangular fields: field hockey field																				0	0	0	0	20,893

APPENDIX D: NEIGHBORING COMMUNITY RECREATION FACILITY AND PROGRAM INVENTORY

The matrices below outline properties and programs offered by neighboring communities. These include: Grand Rapids Charter Township, East Grand Rapids, Kentwood, Cascade Township, Lowell Charter Township, Vergennes Township, and Cannon Township. The facilities are color coded to denote ownership: **Township (black)**, **County (cyan)**, **State (green)**, **Federal (yellow)**, **School (light blue)**, and **Private (red)**. Additionally, it is noted with an asterisk if the facility falls within a five-mile radius of influence from Ada Township.

GRAND RAPIDS CHARTER TOWNSHIP RECREATION FACILITIES

Source: Grand Rapids Charter Township Park and Recreation Five-Year Plan 2018-2022 DRAFT

*Grand Rapids Township Park, 57acres

Amenities	Programs
<ul style="list-style-type: none"> • 3 Ball Diamonds • 4 Tennis Courts • Soccer Field • Playground • Nature Trails • Picnic Tables • Shelter • Restrooms 	<ul style="list-style-type: none"> • AYSO youth soccer

*Crahen Valley Park, 200 acres

Amenities	Programs
<ul style="list-style-type: none"> • Walking/Bike Path • Open Field • Parking • Overlook 	

*Knapp Valley Forest County Park, 93 acres (Kent County)

Amenities	Programs

*Forest Hills Northern Middle and High School, 140 acres

Amenities	Programs

*Forest Hills Community and Aquatic Center

Amenities	Programs
<ul style="list-style-type: none"> • 8 lane, 25 yard standard "short course" instructional and competitive pool • 22' by 45' diving "L" providing 2 one meter diving boards and a 3 meter board for competition. This diving "L" also provides a 6 lane, 25 meter competitive course. • 1,200 square foot community meeting room and building administrative offices 	<ul style="list-style-type: none"> • Preschool Aquatic Classes • American Red Cross Learn-to Swim Program • Adult Aquatic Exercise Classes

*Forest Hills Parks Association

Amenities	Programs
<ul style="list-style-type: none"> • Clubhouse • Outdoor Swimming Pool • 4 Tennis Courts • Playground • Baseball field 	<ul style="list-style-type: none"> • Swim Lessons • Tennis Lessons • Swim Team • Clubhouse Rental

*MVP Athletic Club

Amenities	Programs
<ul style="list-style-type: none"> • Tennis Courts • Basketball Court • Volleyball • Playground • Outdoor Pool • Splash Pad 	<ul style="list-style-type: none"> • Fitness • Training

GRAND RAPIDS CHARTER TOWNSHIP RECREATION FACILITIES (CONTINUED)	
*Frederik Meijer Gardens, 158 acres	
Amenities	Programs
<ul style="list-style-type: none"> • Sculpture Garden • Exhibition Galleries • Conservatory • Botanical Gardens • Japanese Garden • Arid Garden • Greenhouse • Victorian Garden Parlor • Amphitheater 	<ul style="list-style-type: none"> • Adult Classes • Children Classes • Children Summer Camps • Master Lecture Series
*Cascade Hills Country Club, 241 acres	
Amenities	Programs
<ul style="list-style-type: none"> • 27-Hole Golf Course • 4 Tennis Courts • Aquatics • Fitness • Spa 	<ul style="list-style-type: none"> • Youth Tennis Clinics • Private Tennis Lessons • Swim Team • Dive Team • Swimming Lessons
GRAND RAPIDS CHARTER TOWNSHIP RECREATION PROGRAMS	
Source: Grand Rapids Charter Township Park and Recreation Five-Year Plan 2018-2022 DRAFT	
Township	Third Party
None	<ul style="list-style-type: none"> • Aerobics • Jazzercise • Tumbling • Basketball • Indoor Soccer • Baseball • Slimnastics • Gymnastics • Yoga • Volleyball • Open Gym • Golf • Arthritis Exercise • Water Exercise • Spring Board • Diving • Swim Classes • Scuba • Life Saving • CPR <p>*Programs are provided by Forest Hills School District through community education programs.</p>

EAST GRAND RAPIDS RECREATION FACILITIES	
Source: East Grand Rapids Parks and Recreation Website	
Reeds Lake Trail	
Amenities	Programs
<ul style="list-style-type: none"> • 4.2 Mile Walking/Biking Path 	
John Collins Park	
Amenities	Programs
<ul style="list-style-type: none"> • Boat Launch • Lakeshore Pathway, Overlooks and Benches • Rain Gardens • Picnic Areas • Event Space/Plaza • Restrooms 	
Manhattan Park	
Amenities	Programs
<ul style="list-style-type: none"> • Shelter • Picnic Area • Playground • Volleyball Courts • Softball Diamonds • Soccer Field • Tennis Courts • Nature Trails • Sledding Hill 	
Waterfront Park	
Amenities	Programs
<ul style="list-style-type: none"> • Accessible Walking Trails/Boardwalks • Fishing Piers 	
Hodenpyl Woods	
Amenities	Programs
<ul style="list-style-type: none"> • Plant Identification Trail • Walking Trails/Boardwalks 	
Remington Park	
Amenities	Programs
<ul style="list-style-type: none"> • Baseball Field • Restroom • Nature Trails 	
Griffiths Park	
Amenities	Programs
<ul style="list-style-type: none"> • Walking Trail with Benches 	
Wealthy Pool	
Amenities	Programs
<ul style="list-style-type: none"> • Indoor Pool 	

EAST GRAND RAPIDS RECREATION PROGRAMS

Source: East Grand Rapids Parks and Recreation Website

City	Third Party
<p> Youth Programs <ul style="list-style-type: none"> • Art Classes • Music Classes • Babysitting • Fencing • Yoga • Youth Dance • Swim Classes • Sports Camps • Art Camps <p> Adult Programs <ul style="list-style-type: none"> • Art Classes • Dance Classes • AARP Driving Safety • Bridge Classes • Dog Obedience • Aquatic Fitness Classes • Fitness Classes </p> </p>	<ul style="list-style-type: none"> • Coed Cross Country • Girls Volleyball • Boys Basketball • Boys Recreational Inter-squad League • Youth Football League • Field Hockey Camp • Pee Wee Soccer • Soccer Academy League • Coed Middle School League • Basketball Leagues • Youth Cheerleading • Bowling Club • Bricks 4 Kidz Educational Programs <p>*Programs are provided by school districts through community education programs.</p>

KENTWOOD RECREATION FACILITIES	
Source: Kentwood Parks and Recreation Website	
Bowen Station Park	
Amenities	Programs
<ul style="list-style-type: none"> • Biking trails • Picnic Area • Playground • Restroom • Shelter 	
Burgis Park	
Amenities	Programs
<ul style="list-style-type: none"> • Basketball • Picnic Area • Playground • Tennis Courts 	
East Paris Nature Park	
Amenities	Programs
<ul style="list-style-type: none"> • Nature Trails • Picnic Area • Shelter • Restroom 	
East West Trail	
Amenities	Programs
<ul style="list-style-type: none"> • 3.6 Miles of Trail 	
Home Acres Park	
Amenities	Programs
<ul style="list-style-type: none"> • Skate Park • Gaga Ball • Playground • Bocce Ball • Baseball Field • Shelter • Picnic Area • Restroom 	
Jaycee Park	
Amenities	Programs
<ul style="list-style-type: none"> • Disc Golf • Basketball • Tennis Court • Biking & Nature Trails • Picnic Area • Playgrounds 	R.E.A.C.H. Summer Program
Kellogg Woods Park	
Amenities	Programs
<ul style="list-style-type: none"> • Dog Park • Baseball Fields • Soccer Fields • Shelter • Playgrounds • Restrooms 	

KENTWOOD RECREATION FACILITIES (CONTINUED)

***Northeast Park, 100 acres**

KENTWOOD RECREATION FACILITIES (CONTINUED)	
*Northeast Park, 100 acres	
Amenities	Programs
<ul style="list-style-type: none"> • Baseball & Soccer Fields • Basketball • Biking & Nature Trails • Playground • Shelter/Picnic Air 	
Old Farm Park	
Amenities	Programs
<ul style="list-style-type: none"> • Pickleball Courts • Disc Golf • Basketball • Picnic Areas and Grills • Playground 	
Paris Park	
Amenities	Programs
<ul style="list-style-type: none"> • Biking, Walking & Nature Trails 	
Paul Henry Trail	
Amenities	Programs
<ul style="list-style-type: none"> • 2.7 Miles of Trail 	
Pinewood Park	
Amenities	Programs
<ul style="list-style-type: none"> • Splash Pad • Skate Ramps • Baseball Field • Soccer Field • Basketball Courts • Tennis Courts • Playground • Gaga Ball • Shelter • Picnic Area • Restroom 	
Rondo Street Station Park	
Amenities	Programs
<ul style="list-style-type: none"> • Biking & Walking Trails • Playground 	
Stanaback Park	
Amenities	Programs
<ul style="list-style-type: none"> • Basketball Courts • Biking, Walking & Nature Trails • Picnic Area • Shelter • Playgrounds • Restroom 	

KENTWOOD RECREATION FACILITIES	
Source: Kentwood Parks and Recreation Website	
Bowen Station Park	
Amenities	Programs
<ul style="list-style-type: none"> • Biking trails • Picnic Area • Playground • Restroom • Shelter 	
Burgis Park	
Amenities	Programs
<ul style="list-style-type: none"> • Basketball • Picnic Area • Playground • Tennis Courts 	
East Paris Nature Park	
Amenities	Programs
<ul style="list-style-type: none"> • Nature Trails • Picnic Area • Shelter • Restroom 	
East West Trail	
Amenities	Programs
<ul style="list-style-type: none"> • 3.6 Miles of Trail 	
Home Acres Park	
Amenities	Programs
<ul style="list-style-type: none"> • Skate Park • Gaga Ball • Playground • Bocce Ball • Baseball Field • Shelter • Picnic Area • Restroom 	
Jaycee Park	
Amenities	Programs
<ul style="list-style-type: none"> • Disc Golf • Basketball • Tennis Court • Biking & Nature Trails • Picnic Area • Playgrounds 	R.E.A.C.H. Summer Program
Kellogg Woods Park	
Amenities	Programs
<ul style="list-style-type: none"> • Dog Park • Baseball Fields • Soccer Fields • Shelter • Playgrounds • Restrooms 	

KENTWOOD RECREATION FACILITIES (CONTINUED)

***Northeast Park, 100 acres**

KENTWOOD RECREATION FACILITIES (CONTINUED)	
*Northeast Park, 100 acres	
Amenities	Programs
<ul style="list-style-type: none"> • Baseball & Soccer Fields • Basketball • Biking & Nature Trails • Playground • Shelter/Picnic Air 	
Old Farm Park	
Amenities	Programs
<ul style="list-style-type: none"> • Pickleball Courts • Disc Golf • Basketball • Picnic Areas and Grills • Playground 	
Paris Park	
Amenities	Programs
<ul style="list-style-type: none"> • Biking, Walking & Nature Trails 	
Paul Henry Trail	
Amenities	Programs
<ul style="list-style-type: none"> • 2.7 Miles of Trail 	
Pinewood Park	
Amenities	Programs
<ul style="list-style-type: none"> • Splash Pad • Skate Ramps • Baseball Field • Soccer Field • Basketball Courts • Tennis Courts • Playground • Gaga Ball • Shelter • Picnic Area • Restroom 	
Rondo Street Station Park	
Amenities	Programs
<ul style="list-style-type: none"> • Biking & Walking Trails • Playground 	
Stanaback Park	
Amenities	Programs
<ul style="list-style-type: none"> • Basketball Courts • Biking, Walking & Nature Trails • Picnic Area • Shelter • Playgrounds • Restroom 	

KENTWOOD RECREATION FACILITIES (CONTINUED)	
Stauffer Station Park	
Amenities	Programs
<ul style="list-style-type: none"> • Biking & Walking Trails • Picnic Area • Restroom 	
Summerwood Park	
Amenities	Programs
<ul style="list-style-type: none"> • Playground • Picnic Area 	
Veterans Memorial Park	
Amenities	Programs
<ul style="list-style-type: none"> • Basketball courts • Tennis Courts • Biking & Nature Trails • Splash Pad • Playground • Climbing Wall • Shelter • Sand Volleyball • Restroom 	
Wing Station	
Amenities	Programs
<ul style="list-style-type: none"> • Biking & Walking Trails 	
*Calvin College Ecosystem Preserve, 130 acres	
Amenities	Programs
<ul style="list-style-type: none"> • Native Gardens • Trails • Interpretive Center 	<ul style="list-style-type: none"> • Early Childhood • Summer Camp • Family • Discovery Field Packs • Elementary School Groups • College • Adult • Native Plant Sale
MVP Sportsplex	
Amenities	Programs
<ul style="list-style-type: none"> • 3 group exercise studios • 6 indoor tennis courts • Large fitness • 25-meter, 5-lane indoor pool • Outdoor aquatic center with water slides and 0-depth entry pool 	<ul style="list-style-type: none"> • Group Fitness • Fitness & Training • Aquatics • Tennis • Certification Courses

KENTWOOD RECREATION PROGRAMS

Source: Kentwood Parks and Recreation Website

Kentwood	Kentwood (Cont.)
<p>Adaptive Recreation Programs: <i>Adaptive recreation programs provide social, creative, educational opportunities for youth and adults with physical and developmental disabilities.</i></p> <ul style="list-style-type: none"> • Pickleball Clinic • Golf League • Whitecaps Night • Summer Bowling • Bocce Club • Water Ski/Lessons • Adapted Swim Summer • Leisure Club <p>Adult Recreation Programs:</p> <ul style="list-style-type: none"> • Walking Club • Adult Pickleball Lessons • Rock Climbing • Cardio Drumming • Pickelball Ladder Leagues • Softball Spring/Summer • 50 and Better Softball League • Dodgeball Tournament Fundraiser • Adult Women Soccer Leagues • Adult Co-Ed Soccer Leagues • Sand Volleyball League • Adult Softball Leagues <p>Senior Recreation Programs (membership option):</p> <ul style="list-style-type: none"> • Community Connections • Greeting Card Making • Spring Pizza Potluck • Grandma and Me Tea • Pinsplitters Bowling League • Men’s Chess and Checkers • Bridge Club • Knitting and Crochet • Euchre <p>Swim Programs</p> <ul style="list-style-type: none"> • Parent and Child Swim Lessons • Adult Swim Lessons • Preschool Aquatics & Learn to Swim 	<p>Youth Programs</p> <ul style="list-style-type: none"> • Pee Wee Basketball • Youth Soccer Clinic • T-Ball • Sports of All Sorts • Youth Soccer Programs • Introduction to Rugby • Flag Football • Youth Pickleball • Be a Babysitter • Karin’s Horse Connection • Taekwondo <p>Third Party</p> <ul style="list-style-type: none"> • SCOR Soccer • AYSO Soccer • Rocket Football/78ers • Rockford Little League • Rockford Hockey Association • Riptide Swimming Club • Wolverine Little League • Rockford Boys Lacrosse Club • Rockford Girls Lacrosse Club

CASCADE TOWNSHIP RECREATION FACILITIES

Source: Cascade Township Parks, Recreation, and Open Space Plan 2014-2019

Cascade Township Park, 55 acres

Amenities	Programs
<ul style="list-style-type: none"> • Playground • 4 Tennis • 2 Softball • Volleyball • 4 Horseshoes • 2 Soccer • Restrooms • Picnic Shelter (150-200 people) • Picnic Shelter (24 people, playground) • Picnic Gazebo (30 people) • Walking Trail (2 mile) • Frisbee Golf (18 hole) • Dog Park (separate large and small dog) • Natural Area 	

Leslie E. Tassell Park, 3.5 acres

Amenities	Programs
<ul style="list-style-type: none"> • Restrooms • Picnic Shelter (30-45 people) • Picnic Gazebo (10-12 people) • Riverfront Fishing • Canoe/Kayak Access • Splash pad • Community fire ring • Parking 	

Cascade Dam, 0.5 acres

Amenities	Programs
<ul style="list-style-type: none"> • Fishing • Canoe portage 	

Cascade Museum Garden, 0.4 acres

Amenities	Programs
<ul style="list-style-type: none"> • Garden setting 	

*Michael McGraw Park, 68.8 acres

Amenities	Programs
<ul style="list-style-type: none"> • River frontage • Walking trails 	

*Cascade Peace Park, 198 acres

Amenities	Programs
<ul style="list-style-type: none"> • Nature Trails (4 miles) • Port-A-John facility 	

*Cascade Burton Park, 79 acres

Amenities	Programs
<ul style="list-style-type: none"> • Nature Trails (2.5 miles) • Bathrooms • Handicap accessible parking 	

Township Pathways	
Amenities	Programs
<ul style="list-style-type: none"> • 17 Miles Constructed 	
CASCADE TOWNSHIP RECREATION FACILITIES (CONTINUED)	
*Double C Ranch/Curtis Performance Horses	
Amenities	Programs
<ul style="list-style-type: none"> • Main Barn with box stalls (20) and riding arena • Little Barn with box stalls (4) • Outdoor arena • Firepit • Playset with Swingset • Large grass pasture (5) 	<ul style="list-style-type: none"> • Adult riding instruction • Children riding instruction • Horse boarding
*Watermark Country Club	
Amenities	Programs
<ul style="list-style-type: none"> • 18-hole Golf Course • Clubhouse • Outdoor Swimming Pool • Playground 	<ul style="list-style-type: none"> • Tennis Lessons • Golf League
*Mary Free Bed YMCA	
<ul style="list-style-type: none"> • Chapel • KidZone and Activity Center • Multi-Purpose Classrooms • Carol Van Andel Healthy Living Center • Greenhouse • Teaching Kitchen • Administrative Suite • Community Meeting Room • 2 Multi-Purpose Gymnasiums • 1 Sports Court • 8-Lane Lap Pool • Family Fun Pool • Health & Fitness Center • 1/5 Mile Indoor Track • Group Fitness Studios • Indoor Cycling Studio • Climbing Wall • Men's and Women's Locker Rooms • Fully Accessible Family Locker Rooms • 2 Family Locker Rooms with Changing Mat • Men's and Women's Saunas • Learning Farm with Raised Bed Gardens • 1/2 Mile Loop Paved Trail • Soccer Fields • Baseball Fields • Wheelchair Softball Field • Accessible Playground • Outdoor Tennis Courts 	<ul style="list-style-type: none"> • Adult Specialty Programs • Wellness and Prevention Program • Swim Lessons • Sports Classes & Snow Sports • Seasonal Leagues • Music & Dance • Date Nights & parent's Morning Out • Active Programs • YMCA Camp Manitou-Lin Seasonal Activities

Patterson Ice Arena	
Amenities	Programs
<ul style="list-style-type: none"> • Two, Fully Refurbished NHL Sheets Of Ice • Locker Rooms • Meeting Rooms • Lounge Areas • Game Machines • Pro Shop • Concession Stand 	<ul style="list-style-type: none"> • Skating Classes • Private Lessons • League Hockey • Open Hockey • Hockey Camps • Hockey Teams
*Shaggy Pines Dog Park, 20 acres	
Amenities	Programs
<ul style="list-style-type: none"> • 15 acres fenced grounds • One-mile jogging/hiking trail • Lighted and plowed trails for evening and winter use • Two large 'dry' dog areas • Benches and tables • Large dedicated sand pile for climbing and digging • Dog swimming pond • 'Sunset Deck' with music and lounge chairs • Water stations • Dedicated, enclosed small dog area specifically for dogs under 30 pounds • Special events area for agility training, obedience classes and community events and birthday parties • Self-serve dog wash tubs and drying areas • Doggy store • Coffee bar and lounge area 	<ul style="list-style-type: none"> • Membership Facility • Dog Washes • Obedience and Agility Training • Sponsored Events and Parties

CASCADE TOWNSHIP RECREATION PROGRAMS	
Source: Cascade Township Parks, Recreation, and Open Space Plan 2014-2019	
Township	Third Party
None	<ul style="list-style-type: none"> • American Youth Soccer Organization (AYSO), Ada-Cascade AYSO • YMCA <ul style="list-style-type: none"> ○ swim team ○ swimming lessons ○ fitness and wellness ○ youth sports programs in floor hockey, soccer, t-ball, baseball, flag football, basketball, tennis, soccer and gymnastics

LOWELL CHARTER TOWNSHIP RECREATION FACILITIES

Source: Lowell Charter Township Website

Grand River Riverfront Park, 80 acres

Amenities	Programs
<ul style="list-style-type: none"> • Canoe/kayak Launch • 2 Softball Fields • Lacrosse Field • 8 Soccer Fields • Playground • Nature/walking Path • Scenic Overlook • Fishing Pier • Picnic Shelter with Restrooms • Picnic Shelter, Small 	

North Country Trail (Federal)

Amenities	Programs
<ul style="list-style-type: none"> • Hiking route 	

Bradford Dickinson White Nature Preserve, 45 acres

Amenities	Programs
<ul style="list-style-type: none"> • Trails 	

LOWELL TOWNSHIP RECREATION PROGRAMS

Source: Lowell Charter Township Website

Township	Third Party
None	None

VERGENNES TOWNSHIP RECREATION FACILITIES	
Source: Vergennes Township Master Plan, Updated April 9, 2018 & Internet Research	
Wege Foundation Natural Area, 80 acres	
Amenities	Programs
<ul style="list-style-type: none"> • Wittenbach Agri Science Center • Hiking Trails • Cross Country Skiing • Parking 	
Lowell High School, 98 acres	
Amenities	Programs
<ul style="list-style-type: none"> • 8 Tennis Courts • 2 Soccer Fields • Baseball Diamond • Softball Diamond • Lowell Area Trailway • Football Field • Track & Field 	
Fallasburg Park	
Amenities	Programs
<ul style="list-style-type: none"> • Seven (7) group picnic areas • One open shelter • Historic enclosed shelter house with restrooms • Two (2) baseball diamonds • North Country Trail • Trail network • Covered bridge • Three (3) playgrounds • 18-hole disc golf course • Horseshoe pits 	
North Country Trail (Federal)	
Amenities	Programs
<ul style="list-style-type: none"> • Hiking route 	

VERGENNES TOWNSHIP RECREATION PROGRAMS	
Source: Vergennes Township Master Plan, Updated April 9, 2018 & Internet Research	
Township	Third Party
None	None

CANNON TOWNSHIP RECREATION FACILITIES	
Source: Cannon Township Recreation Plan 2016-2021	
Township Center Park, 40.34 acres	
Amenities	Programs
<ul style="list-style-type: none"> • Tot Playground • Picnic Shelter • Parking • Paved Nature Trail • Open Play Area • Mountain Bike Trail 	
Bostwick Lake Park, 0.1 acres	
Amenities	Programs
<ul style="list-style-type: none"> • Swimming Area • Picnic Tables • Benches • Porta Jon • Parking 	
Silver Lake Access, 0.04 acres	
Amenities	Programs
<ul style="list-style-type: none"> • Non-motorized Boat Launch • Parking 	
Non-Motorized Trails	
Amenities	Programs
<ul style="list-style-type: none"> • 5.25 miles of trails 	
Townsend Park, 140 acres (Kent County)	
Amenities	Programs
<ul style="list-style-type: none"> • 2 Playgrounds • 2 Ballfields • 2 Restrooms • Enclosed Picnic Shelter • Picnic Shelter • Picnic Areas • Grills • Natural Trails • Cross-country Skiing 	
*Cannonsburg Ski Area, 270 acres	
Amenities	Programs
<ul style="list-style-type: none"> • Downhill skiing • Tubing • Convention Amenities • Softball Fields • Mountain Biking • Zipline 	<ul style="list-style-type: none"> • Grand Rapids Symphony summer concerts • Sanctioned Mountain Bike Races

CANNON TOWNSHIP RECREATION FACILITIES (CONTINUED)

Camp Roger, 285 acres

Amenities	Programs
<ul style="list-style-type: none"> • Event Facility • Lodge • Cabins • Beach • Dock • Chapel Grove • Hiking Trails • Gazebo • Picnic tables • Activity/Game Sandpit • Volleyball Court • Amphitheatre • Fire Ring • Treehouse • Central Area Gathering Space 	<ul style="list-style-type: none"> • Summer Camp • Outdoor Education • Retreats & Rentals

CANNON TOWNSHIP RECREATION PROGRAMS

Source: Cannon Township Recreation Plan 2016-2021

Township	Third Party
<p>None (no recreation department)</p>	<ul style="list-style-type: none"> • SCOR Soccer • AYSO Soccer • Rocket Football/78ers • Rockford Little League • Rockford Hockey Association • Riptide Swimming Club • Wolverine Little League • Rockford Boys Lacrosse Club • Rockford Girls Lacrosse Club

REFERENCES

Ada Township 2017 Parks, Recreation and Land Preservation Plan

Ada Township Parks, Recreation and Land Preservation Advisory Board

A Look at Trends in Parks & Recreation

Recreation Management Magazine, June 2018. <http://recmanagement.com/feature/201806FE04>

Kent County Draft 2019-2023 Parks, Trails and Natural Areas Master Plan

<https://www.kentcountyparks.org/info/2019-2023MasterPlan.php>

National Fitness Campaign

<https://nationalfitnesscampaign.com/cities/>

New Dog Park In Cascade Township Offers Safe Way for Pets to Exercise and Socialize

Cascade Hospital for Animals, June 5, 2016. <https://chfa.net/news/65-cascade-hospital-for-animals-dog-park>

2017 Outdoor Participation Report

The Outdoor Foundation. https://outdoorindustry.org/wp-content/uploads/2017/05/2017-Outdoor-Recreation-Participation-Report_FINAL.pdf

2018 NRPA Agency Performance Review - Parks and Recreation Agency Performance Benchmarks

National Parks and Recreation Association. <https://www.nrpa.org/siteassets/nrpa-agency-performance-review.pdf>