

THE ADAVIEW

Make the most of yourself, for that is all there is of you.

Your Claim Your Fame!

The Community Media Center celebrates its 22nd anniversary 11th year of filming the Ada Township Independence Day Parade, which will be filmed and aired on GRTV channel 25, which is a department of the Community Media Center, located at 711 Bridge St SW.

Stop by the Ada Township Hall (Bronson Street) during the parade or by the Mobil Media Truck on the green to claim a few of your 15 minutes of fame.

If you are interested in being a part of the Lights, Camera and Action next year contact the Media Center at 459-4788 to find out how.

Inside this Issue:

★ Historical Society:
Grand Marshall
Esther Hazlett

Park Happenings

A Note from the Supervisor,
Clerk & Treasurer!

Neighborhood Watch,
Ada Happenings

Celebrate Your Independence!

Ada Township will celebrate Independence Day on Monday July 4th, 2005.

Everyone is welcome to join in the celebration!

**Fireworks at dusk on Monday
July 4th, 2005**

Forest Hills Central HS

Monday July 4th, 2005 Schedule

7-9:30 AM... Fireman's Pancake Breakfast

8:00AM ... Thornapple Lion's Annual Flea Market

9:30 AM... Parade Line-up

10:00 AM... **PARADE BEGINS**

Grand Marshall Esther Hazlett

10:30 AM—3PM... New Games, New Rides, Virtual Pictures, Arts and Crafts, Live Music, Family Fun Tent and much, much more!

Noon-12:30PM... Classic Car Show Award

All Parade Floats are judged for 1st, 2nd and 3rd Best of Show!

NEW RIDES! NEW ART!

LIVE MUSIC!

FUN FOR FAMILY!

In the Image

Will have a donation truck available for gently used clothing, furniture and small appliances for families in need.

FIREWORKS Monday

JULY 4th

4th of July Parade
Celebration on the Green

Free Virtual Pictures

Free Rides and Games

Music

Food

Many Thanks to those who make this Celebration possible!

Ada Township 4th of July
Committee Members

Ada Christian Reform Church

In the Image

Thornapple Baptist Church

Unity Church of Peace

Mr Timothy Pratt

Community Media Center

and all of our Sponsors

Grand Marshall Esther Hazlett

Oral History with Nina Harrington

Esther Hazlett was born in 1905 to Art and Mary Linkfield. She was one of five children. The family lived in Grand Rapids until she was about four years old when they moved to the Knapp Avenue area of Ada Township.

At first, they had a farm, later, her father started a grocery store where she helped out as a teenager.

Upstairs of the store was a hall where dances were held, also meetings of the Grange, an organization that addressed concerns of the many farmers in the area.

Some of Esther's fondest memories are of her school days at Egypt Valley School where her favorite teacher was Dolly Steele. Dolly was only a few years older than the forty students she taught in nine grades. She would stay with various families in the area during the winter months and provided many special moments for her students.

Esther also remembers a hapless teacher who was frequently bedeviled by many of the students. One time, the school bell rope was cut and the teacher borrowed a ladder from a neighbor to climb to the belfry to repair the rope. The students then removed the ladder leaving the teacher stranded in the belfry until rescued by the neighbor.

Another of her childhood memories was of the sliding parties where lanterns were placed along the roadway and whole families would gather with sleds and bobsleds to enjoy the wonderful hills in the area.

Esther's maternal grandfather was E.V. Knapp for whom Knapp Avenue was named and where her ancestors lived for many years.

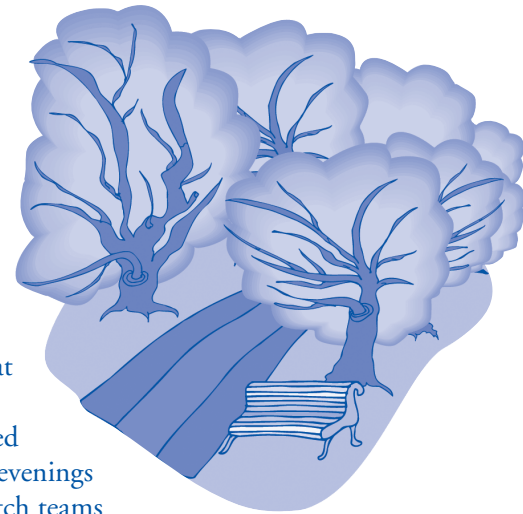
Esther married John B. Hazlett and had three children, Patricia Ross, who lives in Ada, William who lives in Wyoming, Michigan, and Mary Lou Higgens, who lives in the Traverse City area.

Esther has sixteen grandchildren, thirty-four great-grandchildren, and ten great-great-grandchildren. She worked at Metalcraft Corporation in Grand Rapids for twenty years. She lived independently until three years ago and now resides with her daughter, Patricia. Esther enjoys visits with family and friends and watching television.

News from the Parks Dept.

Looks like summer is finally here. After some crazy spring weather, we're ready for the sun and fun that summer brings! If you haven't received a copy of the summer program brochure yet, they can be picked up at the Clerk's Office in the Township Hall or the Park Office located at Ada Park. If you can't find the opportunity to stop by and get a copy, call Wendy at the Park Office (676-0520) to get on the mailing list.

Our softball season is well under way, with tournament play to begin in mid-July. If you're looking for something to do during the evening, bring a picnic to the park and watch a game. Men's slow-pitch teams play on Tuesday and Thursday at Ada Park and on Tuesday at Leonard Field (located by the Covered Bridge). Co-ed teams play on Wednesday evenings at Ada Park. Men's fast-pitch teams play on Thursday at Leonard Field. If you want to view a really exciting game, we have a girl's High School League that plays on Mondays and Wednesdays at Ada Park and Leonard Field. This five-week league will play until the 18th of July.



Anyone witnessing acts of vandalism, including damage to trees, at Township parks is encouraged to report it to the Park Office. Township staff is on duty in the parks from 8:00 a.m. until closing (at dusk) daily until Labor Day. If we are out working in the parks or away from the office, a sign is placed in the clip by the office door to indicate where we are or when we will return. If you should happen to drive by any of the parks during the night and see activity that shouldn't be going on, please call the Sheriff's Department non-emergency number to report it.

The prairie at Ada Park is in bloom. Our prairie is a fen, which means it is a wet area that has a continuous source of alkaline ground water. Scheduled wildflower walks will take place once a month. If you aren't familiar with prairies, the look of them changes throughout the summer as the different wildflowers bloom. In early summer you will see Queen-of-the-Prairie (brilliant pink blossoms) and Brown-eyed Susan. In mid summer the Wild Bergamot (also called Bee Balm) and Joe Pye Weed are in blossom. Late summer and early fall turn the prairie into a royal spectacle as the Goldenrod and Ironweed turn the area into a gold and purple vision. In late fall the prairie provides the opportunity to see some of the plant life that is protected by State law. Ada Park's prairie is

News from the Parks Dept.

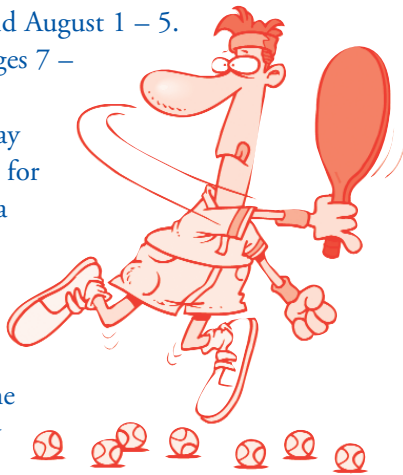
home to several types of Gentian, which only grow in wet prairies. Please remember that the prairie is here for the enjoyment of all the park's visitors and refrain from picking the flowers. Our prairie regenerates on the seed that the flowers leave behind.

Tennis to be Offered

Tennis lessons and camps are scheduled for the summer. A five-week Saturday lesson will be offered from July 23 through August 20. Beginning and advanced players have the opportunity to take advantage of these one-hour classes. Classes for beginners aged 5 & 6 are at 9:00 a.m.; beginners aged 7 – 14 are at 10:00 a.m. and advanced players (ages 7 – 14) will hold class at 11:00 a.m. Space is limited. The five one-hour classes cost \$35 for Ada Township residents and \$45 for non-residents. Contact Wendy at 676-0520 to register beginning June 20. Non-residents can register beginning July 1.

Three tennis camps will be offered this summer. We will have a tennis camp for beginners from July 18 – 22 and another August 8 – 12. The daily one-hour class will be held at 9:00 a.m. for children ages 5 & 6 and 10:00 a.m. for ages 7 – 14. A camp for advanced tennis players will be held August 1 – 5.

In this camp, children ages 7 – 10 will play at 9:00 a.m. and ages 11 – 14 will play at 10:00 a.m. The price for the camps is \$35 for Ada Township residents and \$45 for non-residents. You can register for the camps by calling 676-0520 beginning June 20 for residents and July 1 for non-residents.



For both the lessons and the camps, children need to bring their own tennis racquet and a water bottle with their name on it. Tennis balls will be provided. Due to the demand for the camps and lessons, payment will be due five business days after registering. Brittany Davis, a student at the University of Michigan, will be returning as the tennis instructor. Welcome back, Brittany!

Roselle Park Opens

For those of you that haven't heard yet, Roselle Park (former Ada Beef Company property located on Grand River Drive) opened to the public on a daily basis starting June 13th. The gates to the parking area will be opened at 9:00 a.m. and will close for the evening at 9:00 p.m. This schedule will be observed through Labor Day. Currently there are natural trails that take you through a variety of habitats and lead you to the banks of the Grand River. The area provides some good opportunities to view wildlife. It is recommended that you wear insect repellent when you visit as the wetlands provide the ideal habitat for insects to breed. For your own safety, and the protection of the wildlife and their habitat, you are encouraged to stay on the mowed trails. As with all Township parks, dogs must be leashed and cleaned up after. Guided hikes of the property are scheduled for July 30th and August 20th at 10:00 a.m.

Just a reminder - Ada Park closes at dusk and Roselle Park closes at 9:00 p.m. Gates are locked at that time. Any vehicle still in the parking lot will be locked in for the night. License plates and make/model of car are recorded at that time. Ada Park reopens at 8:00 a.m. and Roselle Park opens at 9:00 a.m.



A Note from the Clerk

The Ada Township Clerk's Office is now an official passport application Acceptance Center.

Basic requirements to obtain a US Passport

1. US Citizen
2. Citizenship Documentation
 - A valid previous US passport (not expired)
 - Certified Birth Certificate (US born) ...not a birth announcement
 - Naturalization Certificate
 - Certificate of Citizenship
 - Report of Birth Abroad (FS-240, FS-545, DS-1350)
3. Identification Documentation
 - 2 pieces of valid identification
4. Photographs
 - Good likeness, full face, normal street attire
 - Two duplicate, 2 inches x 2 inches overall, with image size no less than 1 inch and no more than 1 3/8 inches measured from the top of the head to the bottom of the chin.
 - Color photograph with white or off white colored background
 - No headgear or uniforms

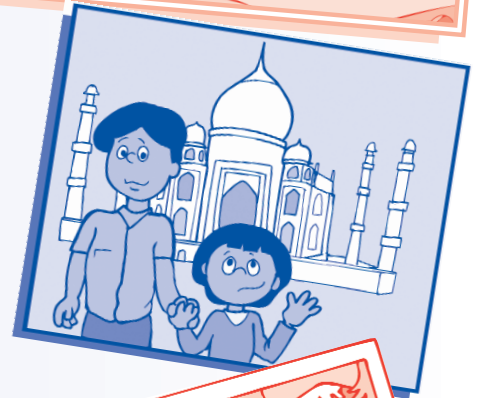
Two separate checks will need to be written
\$55 application fee
\$30 execution

You may access your application at www.travel.state.gov
Or off the link at www.ada.mi.us

The official passport acceptance agents for Ada Township are:
Clerk Deborah Ensing Millhuff
Deputy Clerk Deb Thompson
Administrative Assistant Cassandra Rupke

If you have any questions please contact us at
(616) 676-9191 ext: 20

If you would like to complete your application and bring it to our office for processing you may do so
Monday-Thursday 10AM-4PM.



ATTENTION ADA TOWNSHIP SENIOR AND DISABLED CITIZENS

PLEASE TAKE NOTE: You can apply for a deferment for 2005 summer tax if you household income did not exceed \$25,000 for the preceding calendar year and you meet at least one of the following requirements:

- You are 62 years or older
- Paraplegic or Quadriplegic
- Eligible serviceperson, veteran widow or widower
- Blind person
- Totally and permanently disabled



You may pick up a form at the Ada Township Treasurer's Office at 7330 Thornapple River Dr. or call (616) 676-9191 ext. 27 or 23 to have one mailed to you. The form is due September 14, 2005 by 5:00 pm. If you had a deferment for 2004 a form will be or already has been mailed to you.

HB 4188 was introduced to increase the qualifying income to \$35,000. The original legislation would have made the change effective for this summer's tax. However, after the legislation went through several amendments, it was discovered that the legislation was modified in such a manner that **the changes will not have an impact until the summer of 2006.**

FYI

Tax Shift for County Taxes!

This year one-third of the county operating property tax levy will be collected on the summer tax bill, two-thirds on the winter.

In 2006, two-thirds of the county operating tax levy will be collected on the summer tax bill, one-third on the winter. In 2007, the entire county operating tax levy will be collected on the summer tax bill.

The bottom line is that the summer bill will continue to be the larger of the two yearly tax bills.

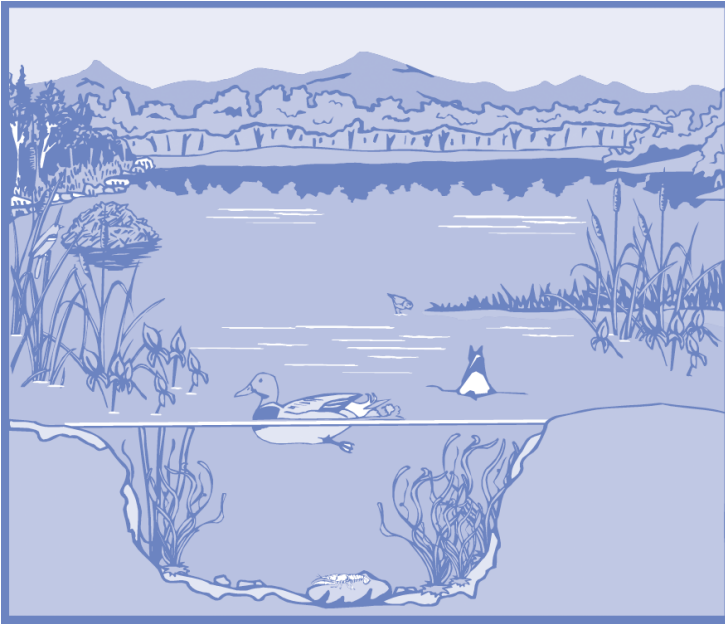
New Payment Method

Summer 2005 taxes may be paid by Visa, Discover, MasterCard or AMEX.

There is a 3% fee charged by the credit card clearinghouse.

For more information please contact the Treasurer's Office, 676-9191, ext 27 or 23. The credit card payments may be made by telephone or on the Internet. More details are listed on the back of the summer tax bill. The Township does NOT accept credit card payments at the counter.





WATER QUALITY SUGGESTIONS FOR LAKE AND POND OWNERS

The following water quality protection recommendations for property owners near lakes and ponds are adapted from material provided courtesy of Professional Lake Management, Inc. Keep in mind that these suggestions also apply to properties that may be located some distance away from a pond or lake, but that are served by storm sewers in the street that discharge to a nearby lake, pond, river or stream.

The key to the survival of your lake or pond is developing a long-term program for reducing nutrients entering the water. The following are suggestions that individual property owners can do at little to no cost to curb nutrients entering the water:

- The use of a greenbelt of natural vegetation between your lawn and the lake to filter runoff. The greenbelt should consist of shrubs, flowers or trees that do not shed their foliage into the water.
- Avoid lawn fertilization, or use no-phosphorous and slow-release nitrogen fertilizer. One pound of phosphorous may produce over 775 pounds of algae.
- Apply nitrogen fertilizer only when the grass is actively growing to minimize loss of nutrients to nearby waters. Begin fertilizing in the spring when temperatures are warm and discontinue before the grass ceases to grow in the fall. Avoid applying fertilizer when heavy rains are forecast.
- Perforate (aerate) the lawn periodically; to encourage water percolation into the soil, and seed and mulch exposed soil (to prevent erosion).
- Remove aquatic weeds and other debris that washes up along the lakeshore so it will not decay near the lake.
- Remove fallen leaves and branches near the lakeshore.
- Remove dog droppings from lawns and deposit in trash containers. This also pertains to geese and duck droppings.
- Encourage the use of stone, brick and similar porous materials when building a landscape to minimize urban water runoff into the water body.
- Disconnect down spouts from storm sewers, and direct the water to lawn areas to soak into the ground.
- Do not pour oil or other material down storm sewers. Do not hook-up washing machine drains to storm sewers.
- Check on all activities occurring around the lake that are either causing erosion to the lake or are filling in the lake below the high watermark.
- Do not feed the ducks and geese.

A Rapid Connection

The Rapid Launches Countywide Transportation Service

The Rapid has kicked-off The County Connection, a new countywide transportation service. The County Connection service ensures that all residents of Kent County have access to public transportation. It is available twenty-four hours a day, seven days a week, with the exception of major holidays. Rides are scheduled in advance and cost \$14.00 each way; same day rides can also be scheduled on a space-available basis with a \$5.00 surcharge per person/per ride. Children under the age of 5 are free. The service area is the borders of Kent County, approximately 22 Mile Road to the north, 108th Avenue to the south, Wilson/Kenowa to the west, and Boynton/Snow to the east. You can ride from any point in the county to any other point in the county using this service.

The County Connection program is funded through a competitive federal job access and reverse commute grant matched by state money. *The Rapid* worked closely with the Workforce

Development Board and the Area Community Service for Employment and Training (ACSET) to design a program that supports work or work-related trips throughout Kent County. Priority is given to clients of ACSET and the Michigan Department of Human Services (formerly FIA), but it is available to all residents of Kent County.

County Connection has brought transportation alternatives to many areas of Kent County that previously had no access to public transportation. The service also assists those choosing to live in rural areas in finding a cost-effective, reliable way to get to work. The County Connection significantly enhances the quality of life for Kent County residents and is quickly on its way to becoming a major success story for *The Rapid*, and ultimately, the people it serves. To schedule a ride or find out more about the service, call *The Rapid* at 800-849-1191.

Tornado: Plan to Survive!

Back by demand

The safest place to be in Tornado is underground, preferably under something sturdy such as a work-bench.

If there is no basement in your home, a small room in the center of the home, such as a bathroom or closet is best.

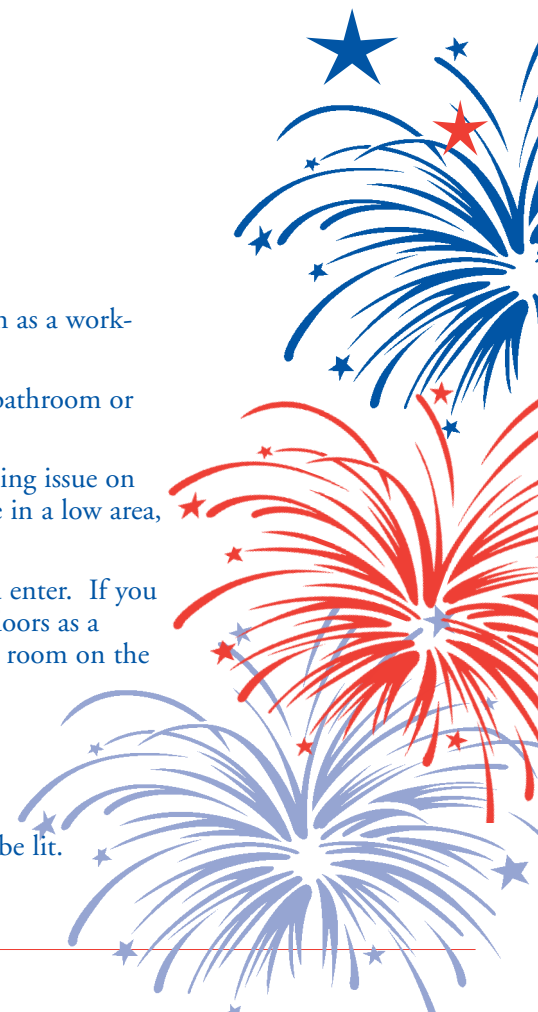
In a Car: Never try to outrun a tornado. If you see a funnel cloud or hear a tornado warning issue on the radio or by a siren, get out of your vehicle seek a safe structure or lie as flat as possible in a low area, with your hands cover the back part of your head and neck.

Work, School or Shopping: Always check the emergency shelter plans of the building you enter. If you cannot locate one ask the establishment that you visit to please furnish one by the entry doors as a courtesy for their customers. If none are available always move to an interior hall or small room on the lowest floor of the building and lie flat.

Be Aware! Stay Alive!

*Always know where the emergency exits are where ever you are.

Most public buildings have a diagram of emergency exits if not each exit should be lit.



Publication Notes . . .

Ada Township Hall is located at
7330 Thornapple River Drive
Open Monday – Friday
(except holidays)
8AM-5PM
(616) 676-9191

ADA TOWNSHIP BOARD

Supervisor

George Haga
ghaga@ada.mi.us
Ext: 50

Clerk

Deb Ensing Millhuff
millhuff@ada.mi.us
Ext: 21

Treasurer

Diane Pratt
pratt@ada.mi.us
Ext: 23

Trustees

Randy Damstra
damstra@ada.mi.us
Robert Proos
proos@ada.mi.us
Mischelle Sytsma
sytsma@ada.mi.us
John Westra
westra@ada.mi.us

You may also access township
information at www.ada.mi.us

Ada Township Board Meetings
2nd & 4th Monday
7:30 PM

June27th
July11th
July25th
August8th
August22nd
September12th
September26th

Ada Township Planning Commission
3rd Thursday
7:30 PM

July21st
August18th
September15th

Ada Township Zoning Board of Appeals
2nd Tuesday
4:30PM

** July12th
(due to holiday)
August2nd
September6th

Ada Township Offices will be closed
Monday July 4th and Monday
September 5th in observance of both
Independence Day and Labor Day

Neighborhood Watch

With summer more opportunity for
thief and vandalism arrives

Please Remember:

- Keep your windows and doors locked!
- Remove all personal items from your car and lock the doors!
- Report any suspicious behavior or vehicles!

Contact the Sheriff's Department
at
632-6357

You may also call the East Precinct
located on Forest Hills Ave.
632-6394 during daytime hours

*It is with mixed emotions that we say
goodbye, good luck and congratulations
to our local community service,
Neighborhood Watch Sheriff Deputy
Todd Probst . . . We will miss him!*

*Deputy Probst is a resident of
Ada Township and has been very
active, helpful and accessible as our
local community Deputy! Deputy
Probst has been a real asset to the
East Precinct and to our goal of
community policing!*

*Deputy Probst is now Sergeant Probst
(having the highest score on the exam
within Kent County) Good Luck
and Congratulations Sgt. Probst!*

How are we doing?

The Ada Township Board and staff are always interested in your comments and ideas. Please, contact us at the Ada Township Hall 7330 Thornapple River Drive PO Box 370 Ada MI 49301 or by accessing our web site at www.ada.mi.us, we are very interested in what you have to say so please do not hesitate to share your concerns and/or ideas.

Monday-Friday 8AM-5PM (616) 676-9191

Be Weather Wise!

(Furnished by Chief Meteorologist George
Lessens WZZM-13)

Summer: June-August

Warmest 74.4" 1955
Coldest 65.5" 1992
Average 69.3"
Last Year 67.6" . . . (13th warmest)

Average Precipitation 11.01"
Last Year 9.06"

Wettest 22.63" 1994
Driest 3.08" 1894
Average 11.01"
Last Year 9.06" (tied 65th wettest)

Average Sunshine 65.0%
Last Year 56.3% . . (12th Cloudiest)

