



# •the• ADAVIEW

the ADAVIEW is published by Ada Township

## ADA VILLAGE DESIGN PLAN NEARING COMPLETION

After a summer full of stakeholder input and data gathering, the Ada Village Design Plan process culminated in a week-long Design Workshop following Labor Day weekend. The draft Plan that emerged from that process establishes a framework for future redevelopment in areas of the Village that residents and other stakeholders identified as being most in need of change.

Minor refinements and revisions to the Plan are currently under review by the DDA Board, the Steering Committee and the DDA Citizens Committee, with the goal of having the Final Plan graphic and report adopted by the end of the year.

Highlights of the proposed plan include:

- Several significant changes to the street network in the Village.
- Opportunities for new commercial and residential development in the Village, along new street corridors and in the long term, on the site of the current Thornapple Village Shopping Center.
- Development of an outdoor civic/public open space between Fulton St. and Headley St., with a future civic building and new space for the Farmers' Market.
- A public open space corridor along the Thornapple River frontage and in the area currently occupied by Speedway.
- A future pedestrian bridge across the Thornapple River, linking to existing trails in the Grand River Nature Preserve along the Grand River.

A phasing plan is also being developed, with the goal of having a meaningful first phase project underway within the next 12-18 months.

Exciting times lie ahead for the Village, so please stay tuned!



## IT'S HERE! THE NEW FIRE TRUCK HAS ARRIVED!

The new fire truck for the Ada Township Fire Department arrived in late October, and replaces *"The Little Fire Engine That Could,"* the truck Ada Township donated to the Abbott Texas Fire Department in August. Chief Jim DuVall said it has been on order for over a year through a program with Kent County. It was specially built to meet the specs required by our Fire Department, and is a beautiful sight to behold.

*Be sure to check the enclosed flyer:*



### & THE BRIDGE LIGHTING CEREMONY

Friday, December 6th • 5:45 to 9:00 p.m.

### THE SANTA PARADE

Saturday, December 7th • 11:00 a.m.

**Note:** A limited number of "Cadence" issues are available at the Township offices, in the lobby, on Mondays.

If you would prefer receiving the AdaView via email, please email the Clerk's office at: [sburton@adatownshipmi.com](mailto:sburton@adatownshipmi.com)

# Ada Historical Society & Museum

## Hours of Operation:

The Averill Historical Museum of Ada is open Fridays and Saturdays from 1:00 - 4:00 p.m. & also by appointment.

## Contact Information

7144 Headley St., Ada  
Phone: 616.676.9346  
[adahistoricalsociety@gmail.com](mailto:adahistoricalsociety@gmail.com)  
[www.adahistoricalsociety.org](http://www.adahistoricalsociety.org)

## Events for December 2013, January & February 2014

### Monthly Board Meeting

**December 12, January 9, February 13 • 2:00 p.m.**

Meeting dates and times subject to change. Please call or email with any questions.

### Members and Volunteers Wanted!

The mission of the Ada Historical Society is to preserve, celebrate, and educate about Ada's history. If those are interests you share, we invite you to join us! We are always looking for new members and volunteers who are willing to share their time with our community-based organization. Feel free to check out our website or pick up a form from the museum telling about volunteer opportunities and membership.

### Wreath Sale

Please stop by our annual fundraiser and prepare to deck your halls! Lush Frazer and Douglas fir varieties are available in a range of sizes adorned with a custom-made bow. Sale hours and order forms are available on our website and at the museum.

### Tinsel, Treats and Trolley

**Friday, Dec. 6 • 5:45-9:00 p.m. in the Village**

The Ada Historical Society will join in the holiday fun! The village is all aglow that evening with the bridge lighting, Old World Santa, carolers, shops open late, food, fun, trolleys and so much more. Ride the trolley down, check out our museum's special Christmas display, visit with Mrs. Claus, and pick up a wreath for sale in the barn. For more info, check out Ada Business Association's website at [www.adabusinessassociation.com](http://www.adabusinessassociation.com).

### Cookie Decorating and Santa Parade

**Saturday, Dec. 7 • 10:00 a.m.-1:00 p.m. in the barn, parade at 11:00 a.m.**

Santa Claus is coming to town! Grab a seat along the parade route and enjoy a winter wonderland parade. The Society will do its part to welcome ol' Saint Nick with cookie decorating and hot chocolate in the barn.

**\*Reminder: the museum is closed during the months of January and February. Please call with any questions\***



*Once Upon a Time Ada had a train depot! This photo from 1979 depicts the Grand Trunk Western Railway depot after its years of service. The depot stood between Bronson St. and the railroad tracks just before the intersection with Headley St. This was a very active spot for a hundred years from the arrival of the first locomotives in the 1850s. Sadly, the building was torn down in 1986. The ADA shingle that hung out along the platform is on display at the Museum.*

### Temporary Exhibit

*Meet Me At the Grove: Yesterday and Today.* Every August, Ada dwellers of decades past would have reveled in the community's favorite summer tradition: the Old Settlers Picnic. From 1886 until the event died out in the 1930s, the community gathered in celebration of Ada's past, present, and future in the Grove - the land near the corner of Ada and Thornapple River drives, behind what is today the gas station. Now, in light of the Ada Village Design Plan, the story of the Grove and its picnics takes center stages at the Ada Historical Society, reminding us of the value of a central, communal space and an event around which we all can gather.

### 'Tis the Season

The holiday season is the perfect time to show those around you how much you care. For those hard-to-buy individuals, consider making a donation in their honor or in memory of someone special as a gift this season. We hope you will consider supporting the preservation and education efforts of the Ada Historical Society. Making a donation is easy—simply call, e-mail or mail us. We thank you for your consideration.

## CHRISTMAS TREE & WREATH RECYCLING ADA TOWNSHIP PARK – DEC. 26 – JAN. 13

Ada Township residents may drop off Christmas Trees and Wreaths for recycling to the back parking lot of Ada Township Park from December 26, 2013 through January 13, 2014, between 7:30 a.m. and 8:00 p.m.



The trees will be recycled into wood chips while the wire from the wreaths will be recycled. Please remove any decorations, wires, strings, ribbons or other items from the trees that might interfere with a chipper.

Residential Christmas items only – no yard waste, trimmings or commercial businesses – Thanks.

## FIREFIGHTER OF THE ISSUE



Firefighter John Shipley, Jr. I am a 2nd generation fire fighter, following in my father's footsteps. I joined the explorer program through Cascade Fire Department on my 12th birthday in 1986. Once I turned 18 in 1992, I was hired as a paid-on call firefighter and stayed with Cascade Fire until 2001. After a brief furlough, I joined the Ada Fire Dept in 2002. I have always believed in giving back to my community which is a quality my parents have instilled in me from a very young age. There is no better career then helping out my fellow citizens in their time of need.

The lessons my parents have passed on to me are the same ones I live by today and pass down to my children. I'm very proud to say my son has taken our passion and is part of the explorer program and is researching making the fire service his career as well. I am hoping to make our family a 3rd generation firefighter.



## FROM THE TREASURER...

Winter tax bills will mailed the week of November 25, 2013. If you do not receive it, please call our office to obtain another copy. All tax payments are due in our office by 5:00pm, Friday, February 14, 2014. Remember **POSTMARKS ARE NOT ACCEPTED** as date received. After March 1, 2014 all unpaid real property taxes will be turned over to the Kent County Treasurers Office for collection.

The usual payment options still apply; by mail, in person, or by credit card (*see the reverse side of your tax bill for instructions*). Credit cards **ARE NOW** accepted at the Township. (a 3% fee of the bill applies). Additionally, you may sign up for ACH electronic payments. Forms must be returned 15 days before payment is due. Please contact our office for more information about ACH. If you do your **banking on-line, please allow a minimum of 10 business days** for payment to reach us. As stated we do not accept postmarks or check dates as date received. We are not responsible for the date of delivery by the United States Postal Service.

**Dog Licenses:** Due to a recent change by the Kent County Animal Shelter, the Township has elected **NOT TO SELL** dog licenses starting December 2013. They are still available at the Kent County Animal Shelter, Kent County Treasurer's Office and at some local veterinary clinics.

Have a safe and happy holiday season!!

Norm Rhoades, Treasurer 616-676-9191, ext 23  
[nrhoades@adatownshipmi.com](mailto:nrhoades@adatownshipmi.com)

Gina Olszewski, Deputy Treasurer 616-676-9191, ext 27  
[golszewski@adatownshipmi.com](mailto:golszewski@adatownshipmi.com)

## PLEASE INFORM THE ASSESSOR'S OFFICE OF YOUR MAILING ADDRESS UPDATES

Please contact our office within thirty days after a change of address occurs to update your mailing information. This will help with the delivery of assessment change notices and tax bills. Our office number is (616) 676-9191, ext 26.

### BUILDING PERMIT REVIEWS

The assessor's office will be working on all open building permits for the year as well as those permits pulled for new construction since January 1st, 2013. We will be in a marked township vehicle and will have identification.

### FIELD REVIEW NOTICE

The Assessor is required to appraise, for tax purposes, all real and personal property within the Township. Michigan Statute requires that all property be evaluated annually based on current market conditions. This evaluation requires an inspection of each property in the Township.

This includes measuring all buildings and other property improvements on the property, taking current digital photos of the property, verifying the buildings current physical condition reviewing the amenities present, and interviewing the property owners to determine bedrooms, baths, and type of basement, etc.

The State of Michigan has recommended that 20% of properties in a governmental unit be visited each year to review assessment record accuracy and to ensure that properties are being appraised and assessed at 50% of the market value. In efforts to continually improve our excellent standards, the Assessor's office strives to enhance the annual review process and better meet or exceed the State of Michigan's expectations. The goal is that the Assessing office will review at least 20% a year of the Township, then every single property is visited at least once every 5 years.

If one of the inspectors from the Township arrives wearing a Township issued I.D. badge and carrying a clipboard and digital camera and knocks on your door requesting to review your property, please welcome them. Accurate assessments benefit everyone in the community.

## REMINDER: PRINCIPAL RESIDENCE EXEMPTIONS...

Filing deadline for new exemptions is June 1st and November 1st. The filing deadline for Principal Residence Exemptions applies to new applications only. You do not need to reapply each year.

## ADA FARMERS' MARKET



Believe it or not, there are still a few things happening with the Ada Farmer's Market after the close of the season. One of them is a new sign project by local scout Andrew Kent. He approached us with a proposal to redesign the parking signs directing traffic around the market space. He had been looking for an Eagle Service Project and saw an opportunity to fill a need.

"Last summer my troop did a service project where my friends and I helped setup and takedown the market. It was a very dry summer and we noticed the signs didn't go into the ground very well," he recalled. "We actually broke one sign trying to get it into the ground! So I thought that new signs for the Ada Farmer's Market might be a good choice for my Eagle Project".

He has presented his prototype for approval and will be finishing the remainder of the signs in time for next year's opening. He says he plans to try for his Eagle before the end of this year but, it might be tough. We here at the Market wish him the best of luck and are grateful for his thoughtful, generous donation.

## TIS THE SEASON...

The Holiday season is coming up quickly and the Fire Department wants it to be a safe one. The following tips can help ensure it will happen.

- **Use Only Nonflammable Decorations**  
All decorations should be nonflammable or flame-retardant and placed away from heat vents. If you are using a metallic or artificial tree, make sure it is flame retardant.
- **Never Put Wrapping Paper in the Fireplace**  
Wrapping paper in the fireplace can result in a very large fire, throwing off dangerous sparks and embers that may result in a chimney fire.
- **Avoid Using Lit Candles**  
If you do use lit candles, make sure they are in stable holders and place them where they cannot be easily knocked down. Never leave the house with candles burning. Never put lit candles on a tree.
- **Christmas Trees**  
If your household includes a natural tree in its festivities, keep the tree watered. Christmas trees account for hundreds of fires annually. Typically, shorts in electrical lights or open flames from candles, lighters or matches start tree fires. Well-watered trees are not a problem but a dry and neglected tree can be.
- **Selecting a Tree for the Holidays**  
Needles on fresh trees should be green and hard to pull back from the branches, and the needles should not break if the tree has been freshly cut. The trunk should be sticky to the touch. Old trees can be identified by bouncing the tree trunk on the

## CALVIN COLLEGE STUDENTS PUT VIDEO PRODUCTION SKILLS TO USE IN ADA

A 7-minute video describing Ada Township's Open Space Preservation program and the benefits of preserving important natural spaces in the Township was completed last summer through a collaboration between the Open Space Advisory Board and video production students in the "Calvin Media Company" course at Calvin College.

This partnership provided an opportunity for students to put their new skills to use in meeting the needs of a real client. The result is a high-quality video production at very low cost for the Township that can be used for meeting presentations, as a table-top display, or viewed on demand on the internet. Professional narration services for the video were donated by broadcast veteran, Township resident and former Planning Commission member Gary Hunt. The video can be viewed on the Township web site – [www.adatownshipmi.com](http://www.adatownshipmi.com).

Calvin students are currently producing another video in a partnership with the Ada Historical Society. The video production course is taught and project oversight is provided by instructor Jake Bosmeijer, Chief Engineer at the Devos Communications Center at Calvin College.

ground. If many needles fall off, the tree has been cut too long and, has probably dried out, and is a fire hazard.

- **Caring for Your Tree**  
Do not place your tree close to a heat source, including a fireplace or heat vent. The heat will dry out the tree, causing it to be more easily ignited by heat, flame or sparks. Do not put your live tree up too early or leave it up for longer than two weeks. Keep the tree stand filled with water at all times.
- **Disposing of Your Tree (See article on Page 2)**  
Never put tree branches or needles in a fireplace or wood-burning stove. When the tree becomes dry, discard it promptly. The best way to dispose of your tree is by taking it to a recycling center or having it hauled away by a community pick-up service.
- **Holiday Lights**  
Inspect holiday lights each year for frayed wires, bare spots, gaps in the insulation, broken or cracked sockets, and excessive kinking or wear before putting them up. Use only lighting listed by an approved testing laboratory.
- **Do Not Overload Electrical Outlets**  
Do not link more than three light strands, unless the directions indicate it is safe. Don't run extension cord under rugs where they will be walked on.

*The National Fire Protection Association and the U.S. Fire Administration estimate 250 home fires involving Christmas trees and another 170 home fires involving holiday lights and other decorative lighting occur each year. Together, these fires resulted in 21 deaths and 43 injuries.*

*From the Ada Township Fire Department and all the firefighters please be careful and have a safe holiday.*

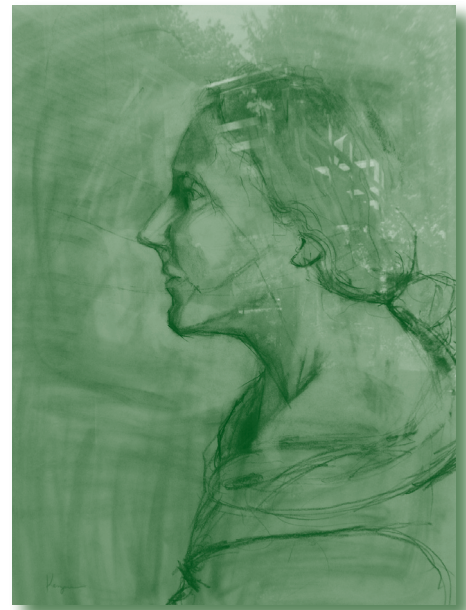
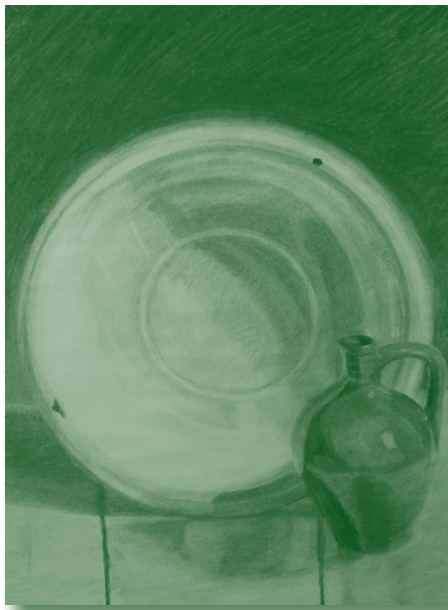
## ARTS COUNCIL DRAWING WORKSHOP

The Parks and Recreation Department, in partnership with the Ada Arts Council, is offering four one-day drawing workshops for beginner to advanced students who wish to learn and improve their drawing skills. Participants may attend any number of the workshops, which will be held on four consecutive Saturdays beginning February 15 and ending March 8, from 10:00 a.m. to 2:00 p.m. at the Les Craig Learning Center at Ada Township Park, 1180 Buttrick Ave SE.

Students will be drawing from still life objects focusing on sighting/measuring, the use of values, structure and form, and how light creates values. The instructor for the workshops is Scott Kenyon. Scott has worked as a fine artist for 15 years, and is a student of the Hawthorn-Hensche tradition of painting at the Cape School of Art in Provincetown, MA and the L'Atelier Aux Couleurs Art Academy in Northern California. Scott's work was featured in a 2010 Hallmark film starring Jane Seymour – Perfectly Prudence, filmed on location in Ada Township.

The workshop fee is \$40 per session. Students will need to provide their own charcoal or graphite pencil, eraser, portable easel, white drawing paper (11" x 14", 11" x 17" or 18" x 24") and drawing board.

To register, complete the registration form below and mail the form and registration fee as indicated on the form.



### REGISTRATION FORM FOR ADA ARTS COUNCIL DRAWING WORKSHOPS

Name: \_\_\_\_\_  
 Phone No. \_\_\_\_\_  
 Email: \_\_\_\_\_



Dates Attending:      Saturday, Feb. 15:     Saturday, Feb. 22:     Saturday, Mar. 1:     Saturday, Mar. 8:

Fee:                  Number of sessions attending: \_\_\_\_\_ X \$40 = \$\_\_\_\_\_

Enclose check for total fee amount payable to: Scott Kenyon

Mail payment and registration form to: Scott Kenyon, 2625 Burton St. SE, Grand Rapids, MI 49546

If you have questions, contact Scott at: [scottfkenyon@aol.com](mailto:scottfkenyon@aol.com) or 616 745-8297

# Ada Parks & Recreation Department

**Mission:** "To provide all community members with diverse recreational opportunities including access to premier natural, historical and cultural areas that enhance our quality of life and inspire the preservation of nature."

## Contact Information:

**Phone:** 616-676-0520 **Fax:** 616-676-5870  
**E-mail:** mfitzpatrick@adatownshipmi.com  
**Web site:** www.adatownshipmi.com  
**Office in Ada Park:** 1180 Buttrick Ave, Ada, 49301  
**Mailing address:** P.O. Box 370, Ada, 49301  
**E-News:** To receive news and updates from the Parks & Recreation Department via e-mail send a request to: mfitzpatrick@adatownshipmi.com.

## Ada Township Parks:

**Ada Park & Locke Arboretum** 1180 Buttrick Ave., 57 acres, Softball & soccer fields, tennis courts, basketball court, playground, fishing pond, trails, picnic tables, grills, pavilion, gazebos, Park office, Learning Center and Locke Arboretum.

**Roselle Park** 1010 Grand River Dr. NE, 247 acres  
 Bike path, trails, cross-country ski trails, picnic area, observation decks, natural areas: wetlands, prairie, woods, Grand River shoreline.

**Leonard Field & Ada Covered Bridge** 7490 Thornapple River Drive. 2 acres Softball field, bike path, outdoor ice rink, Thornapple River overlook deck, Ada Covered Bridge.

**Grand River Natural Area** Grand River Drive SE  
 Enter via Ada Park or McGraw Park, 110 acres Nature area, trails, bike path, woodlands, wetlands, Grand River shoreline.

## Facility Use

**Park Hours:** Park grounds are open to the public dawn to dusk, seven days a week.

**Dog Policy:** Township ordinances require dogs to be on a leash and cleaned up after in all parks.

**Shelter & Gazebo Reservations/Rentals:** Available at Ada Park April through October. For details or reservations, contact the Park office.

**Athletic Fields & Courts:** At Ada Park may be reserved. Contact the park office for details.

**Ice Rink at Leonard Field:** Available only as the weather allows, for the public for general skating. Children need to be supervised by a guardian.

**Cross Country Ski Trails at Roselle Park:** Available as weather allows. Trials start near the silo and extend through the north section of the park. Please do not walk on or allow dogs on ski tracks.

**Walking & Bike Paths:** We will attempt to clear snow off the paved trails after each major snowfall. They may remain wet, icy and/or slippery.

## Roselle Park Update

This past summer and fall Roselle Park had some improvements including the start of a new entrance and parking lot and a playground. The new entrance will open in the spring once the snow clears. Thanks to donors, several new pieces of playground equipment have already been installed. Plans are under way to establish a community building on the site. Donations are welcomed toward these and other improvements in the parks.



## Adult Programs

### Ada Adult Softball Programs 2014

We will start taking team applications for the 2014 adult spring/summer softball program in February. Contact the Park Office at 616-676-0520 or email [rmccormick@adatownshipmi.com](mailto:rmccormick@adatownshipmi.com) for an application. Games are held at Ada Park and Leonard Field, Monday - Thursday evenings. Fields are available for rental as schedules allow. A late summer/fall softball program will again be held in 2014, contact the park office if interested. Standings are posted at the Ada Township web site [www.adatownshipmi.com](http://www.adatownshipmi.com).

### Drawing Workshops

Provided by the Ada Art Council  
 Ada Township Park Learning Center  
 Saturdays, Feb. 15 & 22, March 1 & 8  
 10:00 a.m. – 2:00 p.m. \$40/per session



Beginner to advanced artists are welcome. You may attend one or more of the workshop dates. Instructor Scott Kenyon will coach participants through a range of techniques both as a group and individually to improve your drawing skills. Pre-registration required through the Ada Arts Council by contacting Scott at [scottkenyon@aol.com](mailto:scottkenyon@aol.com) or 616-745-8297.

### Volunteer Opportunities

Ada Parks & Rec. Department welcomes individuals and groups to help out in the parks. Volunteers may assist with landscaping, gardens, grooming ski trails, habitat stewardship, program instruction, office work and/or summer youth programs. To apply, contact the Park office at 616-676-0502 or via email.

### Kent County Annual Christmas Bird Count

Saturday, December 28  
 WWEEC in Lowell  
 7:30 a.m. -noon  
 \$5/adult youth/free

Join the Grand Rapids Audubon Club and other bird enthusiasts for this annual event. To register contact Tom Leggett at [tomleggett@hotmail.com](mailto:tomleggett@hotmail.com), 616-249-3382 or see [www.glsa.org/grac](http://www.glsa.org/grac)



# Ada Parks & Recreation Department (con't)

## Youth Programs

Pre-registration requested by calling 616-676-0520 or email [mfitzpatrick@adatownshipmi.com](mailto:mfitzpatrick@adatownshipmi.com).

### Discovery Days (preschoolers and parents)

Dates vary      Ages 3-5      10:00 a.m. – 12 noon  
Ada Park Learning Center      \$5/youth

Parents, join your pre-schooler for a fun morning of nature study, hands-on activities, and games. Programs will have inside and outdoor activities, so come dressed to be outside. Each program will be offered on two consecutive days.

#### “Nature Prepares for Winter”

Wed., December 11 and Thursday, December 12

#### “Snowflakes and Snowballs”

Wed., January 8 and Thursday, January 9

#### “Tracks...who walked here?”

Wed., February 5 and Thursday, February 6

## “Snowshoes Stomp”

A Junior Naturalist event  
(ages 7 – 11)

Saturday, February 1

10:00 a.m. – 12 noon

Ada Park Learning Center

\$5/youth



Yes, snowshoeing through Ada Park! Learn about types of snowshoes and how some animals survive with their own “built-in” snowshoes. Then walk through the park on snowshoes and play some fun snowshoe games. Snowshoes provided. Parents may drop off youth or stay to assist.

## Summer Youth Programs

Ada Township Parks offers a wide variety of summer recreation programs including day camps, ½ day and fun day events and sports workshops. Contact the Park office to be on the mailing list. Details will be available in January.

## Schools Based Programs

Opportunities for pre-k to 12 schools, homeschoolers and college students range from guided field trips in the parks (\$2/student), to service learning projects (free) to shelter facilities for rent (\$35/day). Contact the Park office for details and scheduling.

## Boy and Girl Scout Programs

Scout groups are welcome to the resources of Ada Parks & staff to help complete badge requirements, have field trip outings, conduct service projects or rent a facility. Contact the Park office for details.

## Family & General Programs

Pre-registration requested by calling 616-676-0520 or email [mfitzpatrick@adatownshipmi.com](mailto:mfitzpatrick@adatownshipmi.com).

### Cross Country Skiing – The Basics

Saturday, January 11

10:00 a.m. to 12:00 noon

Roselle Park

\$5/adult \$3/youth



Introductory lessons on cross-country ski equipment and techniques followed by a guided ski outing in the park. Program is targeted for beginners and intermediates. You will need to bring your own skis or rent from local vendors. Pre-registration is requested. Contact the park office for more details.

### Michigan Woodpeckers and Suet Feeders

Saturday, Feb 8

10:00 a.m. to 12:00 noon

Ada Township Park

\$10/suet feeder kit

We'll start with an interactive presentation to learn about Michigan's amazing woodpeckers – their calls, sounds, what they eat, their awesome adaptations and how to attract them. Then, make a personal suet feeder to take home for your yard. All materials and supplies provided. Pre-registration is required by Thursday, Feb. 6.

### Michigan Reptiles and Amphibians

Thursday, March 27

7:00 – 8:00 p.m.

Ada Park Learning Center

\$5/person



A special live animal presentation by Naturalist Jim McGraph of “Nature Discovery.” Live snakes, frogs, toads, turtles and salamanders will be featured in this presentation plus hands-on artifacts and audio visual. Get an up-close view of some of nature's incredible creatures and learn about their amazing adaptations. Doors open at 6:30 p.m., program at 7:00 p.m. Pre-Registration required - seating is limited.

## Save the Date for the next Roselle Park River Festival and Grand River-Run



Saturday,  
September 27, 2014

8k and 2k runs in  
the morning  
Festival 10:00 a.m. - 4:00 p.m.



PRSR. STD.  
US POSTAGE  
**PAID**  
Grand Rapids, MI  
Permit No. 657

**7330 Thornapple River Drive SE.  
P.O. Box 370  
Ada, Michigan 49301**

**CALENDAR (2013 - 2014) WINTER ISSUE**

**DECEMBER**

- 3 Zoning Board of Appeals – 4:30 p.m.
- 6\*** Tinsel, Treats & Trolley/Bridge Lighting-5:45-9:00 p.m.
- 7\*** Santa Parade 11:00 a.m. (line-up @ 10:00 a.m.)
- 7\*** Christmas Cookie Decorating @ Historical Society Barn – 10-1:00 p.m.
- 9 Ada Township Board Mtg – 7:00 p.m.
- 12 Open Space Preservation Advisory Bd – 4:00 p.m.
- 12** Ada Historical Society Board Meeting – 2:00 p.m.
- 16 Downtown Development Authority – 8:00 a.m.
- 19 Planning Commission – 7:00 p.m.
- 24** Christmas Holiday-Offices Closed
- 25** Christmas Holiday-Offices Closed
- 26-Jan 13\*** Christmas Trees & Wreath Recycling 7:30 a.m. – 8:00 p.m.
- 31** New Years Holiday-Offices Closed

- 13 Ada Township Board Mtg – 7:00 p.m.
- 13 Downtown Development Authority – 8:00 a.m.
- 14 Ethics Board – 6:30 p.m.
- 16 Planning Commission – 7:00 p.m.
- 20** Martin Luther King Jr. Day - Offices Closed
- 27 Ada Township Board Mtg – 7:00 p.m.

**FEBRUARY**

- 4 Zoning Board of Appeals – 4:30 p.m.
- 10 Ada Township Board Mtg – 7:00 p.m.
- 13 Open Space Preservation Advisory Bd – 4:00 p.m.
- 13** Ada Historical Society Board Meeting – 2:00 p.m.
- 14\*** Winter Tax Bills Due by 5:00 p.m.- (postmarks not accepted)
- 17** Presidents' Day – Offices Closed
- 18 Downtown Development Authority – 8:00 a.m.
- 20 Planning Commission – 7:00 p.m.
- 24 Ada Township Board Mtg – 7:00 p.m.

\*See article

**Coming in March:**  
Forest Hills Expo – March 15, 9:30 – 2:30 p.m. at Ada Christian School  
**Coming in May:**  
Arts in Ada - May 10, 2014

**JANUARY**

- 1** New Years Holiday-Offices Closed
- 7 Zoning Board of Appeals – 4:30 p.m.
- 9 Open Space Preservation Advisory Bd – 4:00 p.m.
- 9\*** Ada Historical Society Board Meeting – 2:00 p.m.

**IMPORTANT INFORMATION** *(remove & save)*

AdaView is published by Ada Township Board.  
7330 Thornapple River Drive SE., P.O. Box 370,  
Ada, Michigan 49301

**TELEPHONE:** 616-676-9191, [www.adatownshipmi.com](http://www.adatownshipmi.com)

**HOURS:** Monday-Friday, 8 a.m.-5 p.m., Closed Holidays

**Ada Township Board Supervisor**

George Haga, Ext. 50, P.O. Box 370, Ada, 49301  
[ghaga@adatownshipmi.com](mailto:ghaga@adatownshipmi.com)

**Clerk**

Susan Burton, Ext. 21, P.O. Box 370, Ada, 49301  
[sburton@adatownshipmi.com](mailto:sburton@adatownshipmi.com)

**Treasurer**

Norm Rhoades, Ext. 23, P.O. Box 370, Ada, 49301  
[nrhoades@adatownshipmi.com](mailto:nrhoades@adatownshipmi.com)

**Trustee:** Paul LeBlanc

[pleblanc@adatownshipmi.com](mailto:pleblanc@adatownshipmi.com)

**Trustee:** Bob Proos

[bproos@adatownshipmi.com](mailto:bproos@adatownshipmi.com)

**Trustee:** Jackie Smith

[jsmith@adatownshipmi.com](mailto:jsmith@adatownshipmi.com)

**Trustee:** Catherine Jacobs

[cjacobs@adatownshipmi.com](mailto:cjacobs@adatownshipmi.com)

**Editor:** Susan Burton, Ada Township Clerk

**Co-Editor:** Renee Larsen

**Design & Printing:** Falcon Printing

